



www.chrystals.co.im

Neston, Jurby Road, Ramsey, IM8 3NZ
Asking Price £335,000

Neston, Jurby Road, Ramsey, IM8 3NZ

Asking Price £335,000

Neston is a charming and characterful semi detached home situated in a desirable location within easy reach to local shops, schools and town centre. The ground floor accommodation comprises large porch, entrance hall with washroom (WC), separate living room, dining room and kitchen with access to the rear garden. To the first floor there are three bedrooms and a family bathroom with a separate WC. Externally, the property benefits from a driveway to the front providing parking for multiple vehicles, along with a good-sized lawned garden. To the rear, there is a spacious lawned garden and a detached garage, offering excellent outdoor space and practicality.



LOCATION

From Parliament Square travel north up Bowring Road and then turn left on Jurby Road and the property can be found on the right hand side shortly before the turning to Clifton Drive clearly identified by our for sale board.

PORCH

11' 10" x 10' 2" (3.6m x 3.1m)

HALLWAY

15' 5" x 7' 7" (4.7m x 2.3m)

LIVING ROOM

13' 9" x 14' 9" (4.2m x 4.5m)

DINING ROOM

13' 9" x 11' 10" (4.2m x 3.6m)

KITCHEN

15' 1" x 10' 10" (4.6m x 3.3m)

W.C

6' 7" x 3' 3" (2.0m x 1.0m)

FIRST FLOOR

BEDROOM

14' 9" x 14' 1" (4.5m x 4.3m)

BEDROOM

13' 9" x 12' 10" (4.2m x 3.9m)

BEDROOM

7' 3" x 6' 11" (2.2m x 2.1m)

FAMILY BATHROOM

6' 3" x 8' 2" (1.9m x 2.5m)

SEPERATE W.C

6' 3" x 8' 2" (1.9m x 2.5m)

OUTSIDE

Concrete driveway for off road parking. Large lawned area to the front and rear. Detached garage. Oil tank.

SERVICES

Mains water, electricity and drainage. Oil central heating.

VIEWING

Viewing is strictly by appointment through CHRYSTALS Please inform us if you are unable to keep appointments.

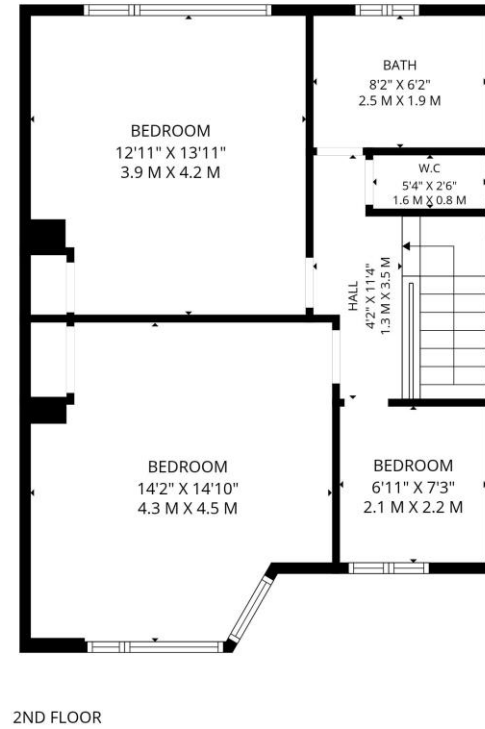
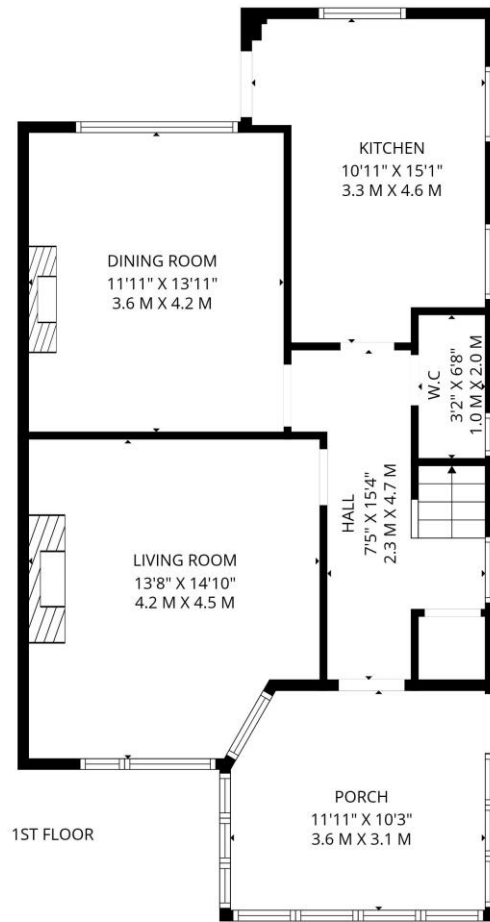
POSSESSION

Vacant on completion. The company do not hold themselves responsible for any expenses which may be incurred in visiting the same should it prove unsuitable or have been let, sold or withdrawn. DISCLAIMER - Notice is hereby given that these particulars, although believed to be correct do not form part of an offer or a contract. Neither the Vendor nor Chrystals, nor any person in their employment, makes or has the authority to make any representation or warranty in relation to the property. The Agents whilst endeavouring to ensure complete accuracy, cannot accept liability for any error or errors in the particulars stated, and a prospective purchaser should rely upon his or her own enquiries and inspection. All Statements contained in these particulars as to this property are made without responsibility on the part of Chrystals or the vendors or lessors









TOTAL: 1224 sq. ft, 114 m2

1st floor: 641 sq. ft, 60 m2, 2nd floor: 583 sq. ft, 54 m2



Since 1854



DOUGLAS

31 Victoria Street
Douglas IM1 2SE
T. 01624 623778
E. douglas@chrystals.co.im

PORT ERIN

23 Station Road
Port Erin IM9 6RA
T. 01624 833903
E. porterin@chrystals.co.im

COMMERCIAL

Douglas Office: 01624 625100, commercial@chrystals.co.im

RENTALS

Douglas Office: 01624 625300, douglasrentals@chrystals.co.im