



# Aldreds Farm, Jacks Lane

Westhoughton



**Miller Metcalfe**  
PRESTIGE

SINCE 1891

Welcome to this exquisite, detached dwelling, nestled in the peaceful surroundings of Westhoughton. This breath-taking property boasts 4 double bedrooms, 3 modern bathrooms.

The property sits on approximately 6 acres of land, offering 4 stables, a barn with power and lighting, and a peaceful pond, creating a dream lifestyle for equestrian enthusiasts and nature lovers.



Fully modernised to a superior standard, the property features a spectacular modern kitchen with an inviting island, seamlessly connecting to a spacious dining area, bar, and living space. The ultimate entertainment space awaits, complete with bi-fold doors leading to the great outdoors.

Step into the cosy lounge, or enjoy the latest blockbuster in the state of the art entertainment/ cinema room or retreat to the tranquil master bedroom suite with a built-in closet and a luxurious en suite, featuring a standalone bath overlooking the picturesque fields and a walk-in shower.

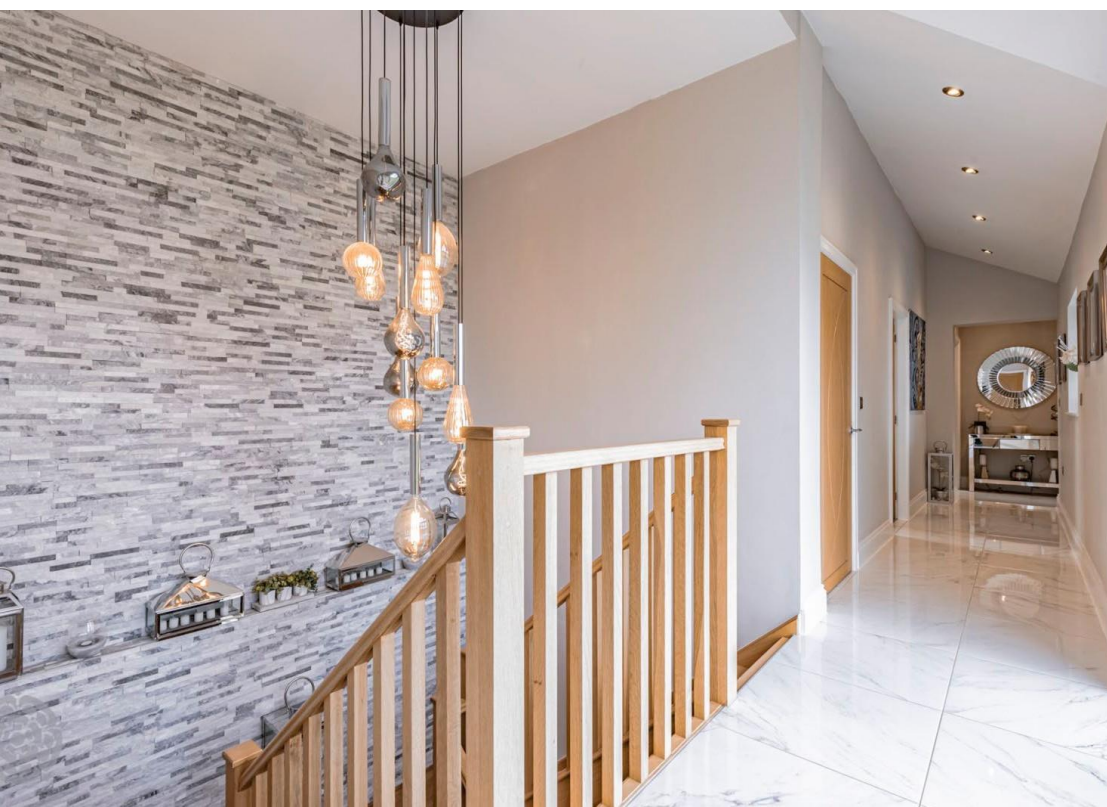
Located on Jacks Lane in Westhoughton, this property provides easy access to local supermarkets, while maintaining its rural tranquillity amidst stunning landscapes. The area also boasts an array of local shops, bars, and restaurants, ensuring a vibrant community for families and upsizers alike. Convenient motorway links via the M61 and close proximity to prestigious schools such as Bolton School make this property an ideal haven for discerning buyers seeking the perfect blend of luxury and convenience.

Don't miss the opportunity to explore this exceptional property - schedule a viewing today and step into a world of refined elegance and countryside charm.

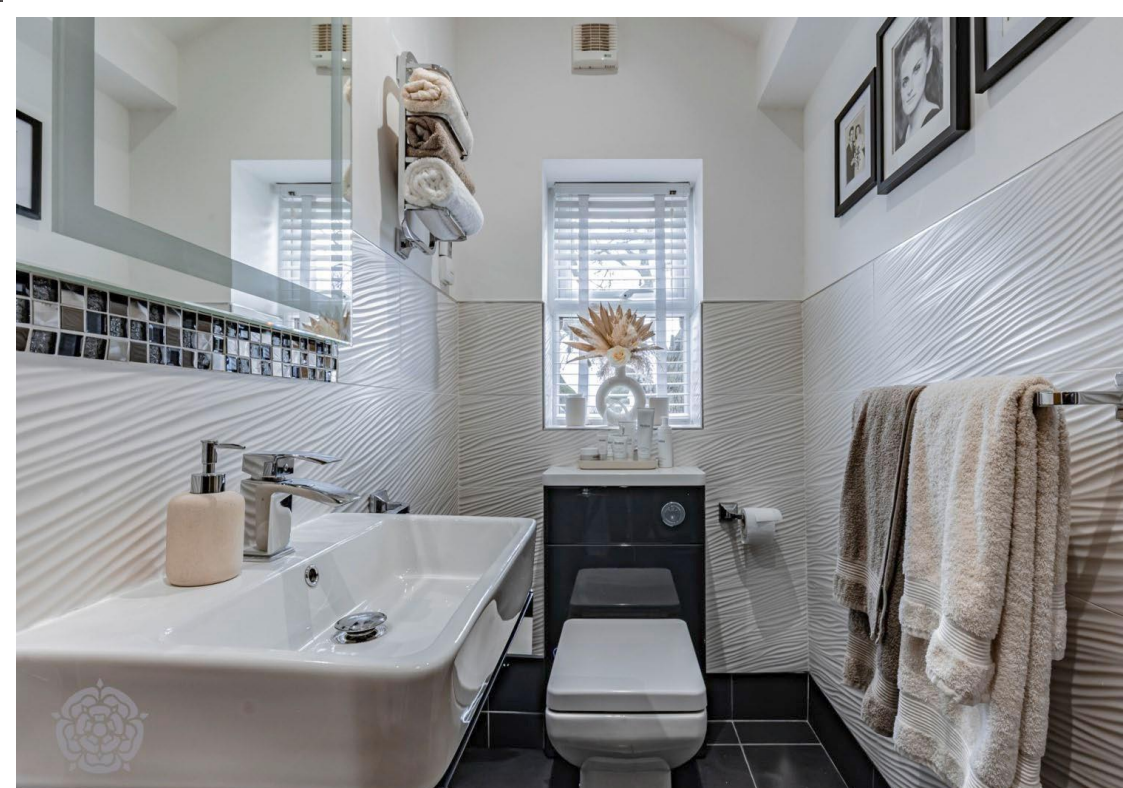














## Tenure

Freehold

## Council Tax

Local Authority – Bolton  
Band – G  
Annual Price - £3,579

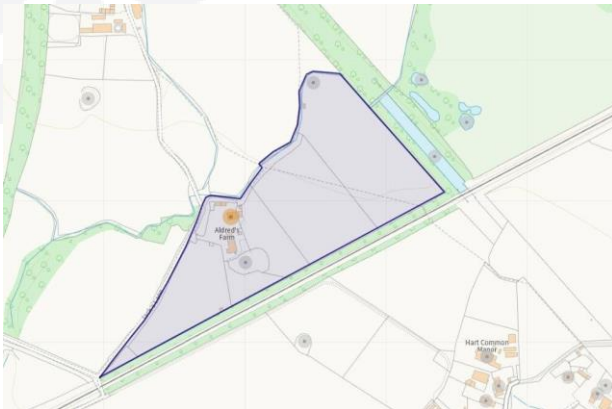
## Mobile Coverage

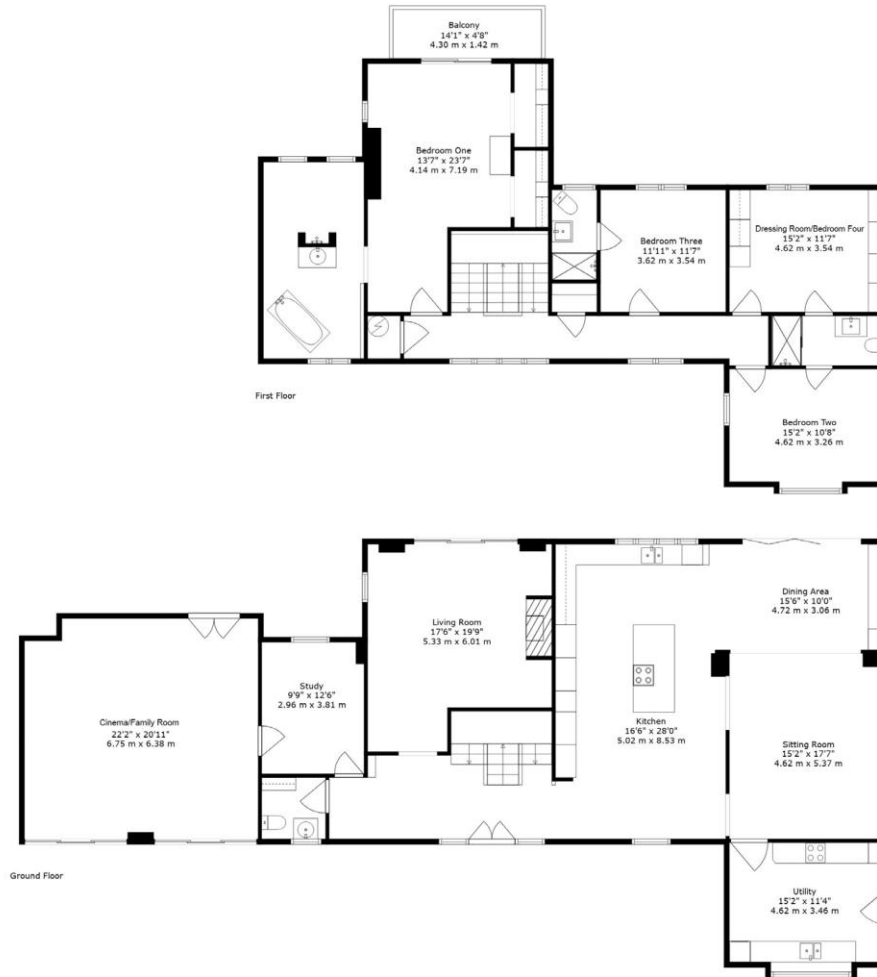
EE  
Vodafone  
Three  
O2

## Satellite / Fibre TV Availability

BT  
Sky  
Virgin

EPC Rating – To be confirmed





**TOTAL: 3574 sq. ft, 332 m2**  
 BELOW GROUND: 2213 sq. ft, 206 m2, FIRST FLOOR: 1361 sq. ft, 126 m2  
 EXCLUDED AREAS: BAY WINDOW: 12 sq. ft, 1 m2, BALCONY: 66 sq. ft, 6 m2

For Illustrative Purposes Only - Not To Scale. The Position And Size Of Doors, Windows, Appliances And Other Features Are Appropriate Only. Created On Behalf Of Miller Metcalfe By Northern Property Media. Accurate To 97%.



Every attempt has been made to ensure accuracy, however these property particulars are approximate and for illustrative purposes only. They have been prepared in good faith and they are not intended to constitute part of an offer of contract. We have not carried out a structural survey and the services, appliances and specific fittings have not been tested. All photographs, measurements, floor plans and distances referred to are given as a guide only and should not be relied upon for the purchase of any fixture or fittings. Lease details, service charges and ground rent (where applicable) are given as a guide only and should be checked prior to agreeing a sale.