



1 Mount Street Bishops Lydeard TA4 3LH

£290,000

robert
cooney



Situated in centre of this popular village at the foot of the Quantock Hills is this immaculately presented 2 double bedroomed semi-detached stone built period cottage with original period features, enclosed walled garden and driveway parking. No onward chain.





Features

- Entrance Hall with flagstone flooring
- Living Room with exposed beams
- Kitchen / Dining Room with exposed beams
- Cloakroom
- Master Bedroom with vaulted ceiling
- Further double Bedroom
- Re-fitted Bathroom with separate shower
- Enclosed walled garden with useful shed
- Gas central heating
- Double glazing
- Original period features
- Council tax band D
- What3words:
///animates.waltzes.clots



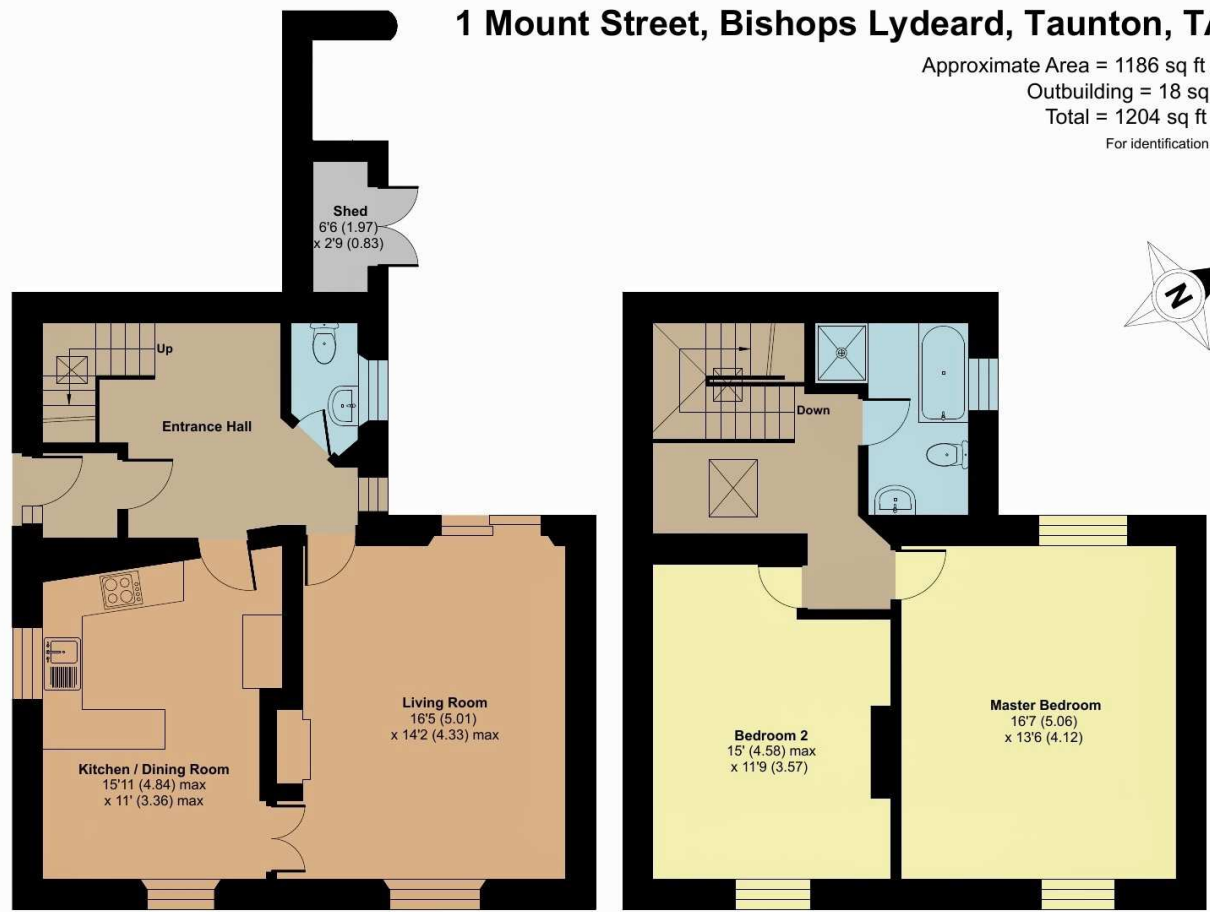
1 Mount Street, Bishops Lydeard, Taunton, TA4 3LH

Approximate Area = 1186 sq ft / 110.1 sq m

Outbuilding = 18 sq ft / 1.6 sq m

Total = 1204 sq ft / 111.7 sq m

For identification only - Not to scale



GROUND FLOOR

FIRST FLOOR



Floor plan produced in accordance with RICS Property Measurement 2nd Edition, Incorporating International Property Measurement Standards (IPMS2 Residential). © nichecom 2026. Produced for Robert Cooney. REF: 1429668



Viewing strictly through the selling agents:

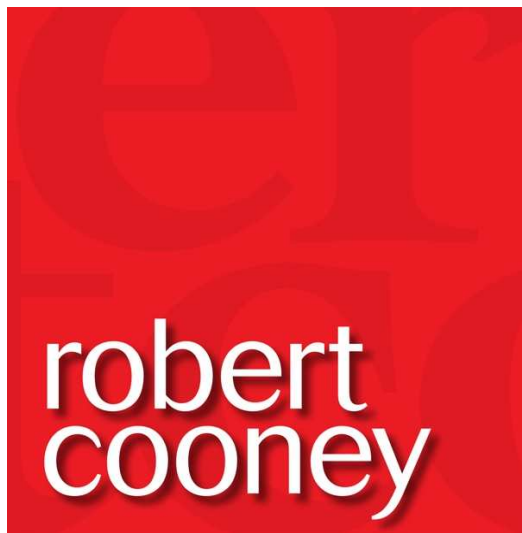
Robert Cooney

Corporation Street, Taunton,
Somerset TA1 4AW

Telephone 01823 230 230

taunton@robertcooney.co.uk

www.robertcooney.co.uk



For clarification, we wish to inform prospective purchasers that: these particulars are set out as a general outline only for the guidance of intended purchasers, and do not constitute, nor constitute part of, an offer or contract; all descriptions, dimensions, references to condition and necessary permission for use and occupation, and other details, are given without responsibility and any intending purchasers should not rely on them as statements or representation of fact, but must satisfy themselves by inspection or otherwise as to the correctness of each of them; no person in the employment of Robert Cooney has any authority to make or give any representation or warranty whatever in relation to this property; we have not carried out a detailed survey nor tested the services, appliances and specific fittings.