



COLLEGE MANSIONS, NW6

£899,950

Spacious Lateral Apartment
Mansion Block
Top Floor Flat
Three Double Bedrooms
Share of Freehold
Local Amenities

@marshandparsons
marshandparsons.co.uk

MARSH &
PARSONS

ABOUT THE PROPERTY

This exceptional three double bedroom apartment is set on the third floor of an imposing period mansion block, boasting fantastic living and entertaining space. Benefits include a large semi open plan kitchen/reception room with views over Queen's Park, three spacious bedrooms and two large bathrooms. Additional features include a communal storage space and gated entrance.

Winchester Avenue is ideally located within easy reach of green open spaces of Queen's Park and the restaurants, cafés and amenities of Salisbury Road. Local transport links include Queen's Park (Bakerloo Line) and Brondesbury Park (London Overground).







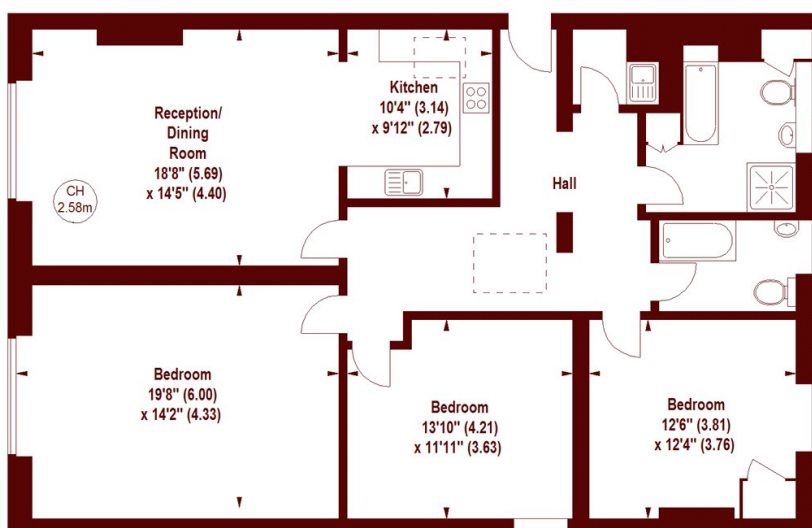


STEP INSIDE COLLEGE MANSIONS

College Mansions, NW6

APPROX. GROSS INTERNAL FLOOR AREA 1427 SQFT / 132.57 SQM

Key :
CH - Ceiling Height



THIRD FLOOR

The floor plan is not to scale and measurements and areas shown are approximate and therefore should be used for illustrative purposes only. The plan has been prepared in accordance with the RICS code of Measuring Practice and whilst we have confidence in the information produced, it must not be relied on.

If there is any aspect of particular importance, you should carry out or commission your own inspection of the property.

Copyright of FeaturePRO.

Queen's Park
020 7624 4513

Energy Rating: D We aim to make our particulars both accurate and reliable. However, they are not guaranteed; nor do they form part of an offer or contract. If you require clarification on any points then please contact us, especially if you're traveling some distance to view. Please note that appliances and heating systems have not been tested and therefore no warranties can be given as to their good working order

MARSH &
PARSONS