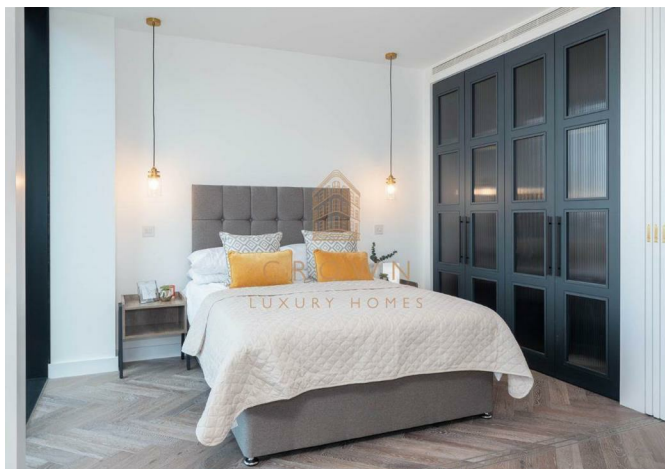




Flat 1603 Cashmere Wharf, 23 Gauging Square, London, E1W 2AX  
£3,150 Per month

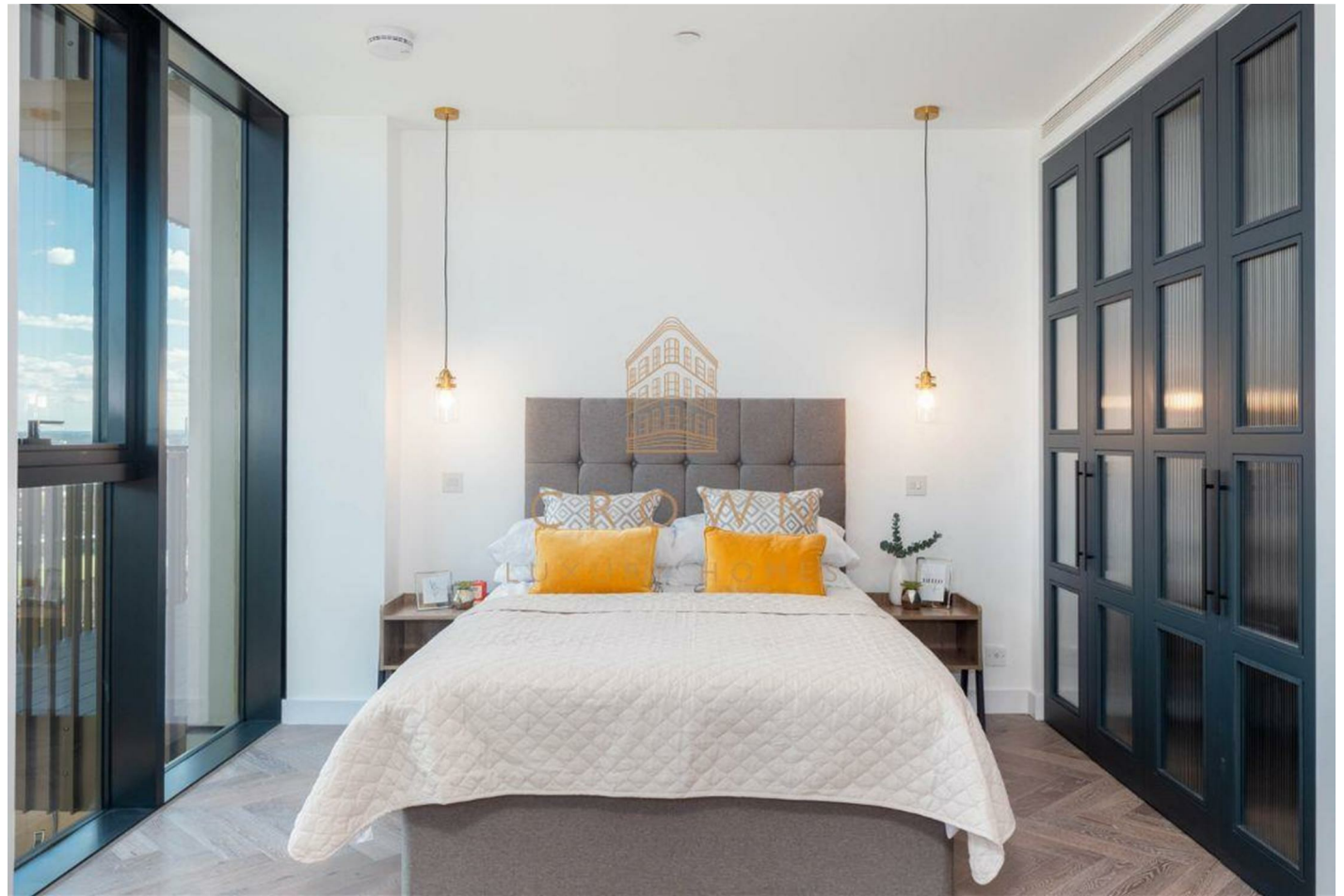


Flat 1603 Cashmere Wharf, 23 Gauging Square, London, E1W 2AX

£3,150 Per month

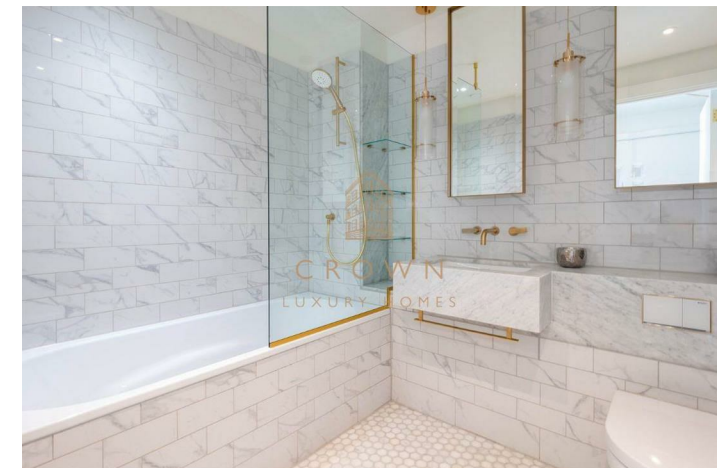
Available in August | Furnished | Manhattan-Style Apartment | Balcony | 24/7 Concierge | Gym | Swimming Pool | Spa Facilities | Squash Court | Cinema Room | Virtual Golf Room | WeChat: CLH-Consultant.

## Description



## Situation

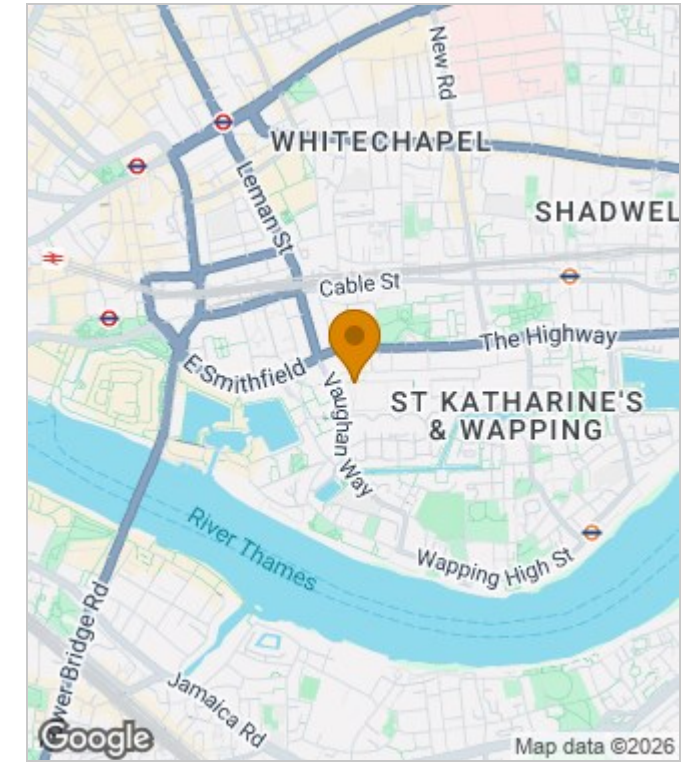
Furnished  
Council Tax Band: E  
Available: 28th August 2026



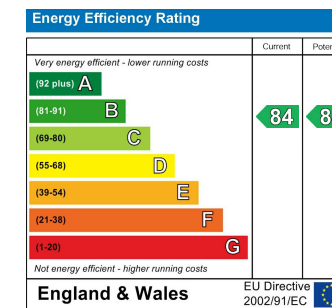
## Floor Plans



## Area Map



## Energy Performance Graph



These particulars, whilst believed to be accurate are set out as a general outline only for guidance and do not constitute any part of an offer or contract. Intending purchasers should not rely on them as statements of representation of fact, but must satisfy themselves by inspection or otherwise as to their accuracy. No person in this firm's employment has the authority to make or give any representation or warranty in respect of the property.