



Connells

Belvedere Marine Drive
Paignton



Property Description

A Fully Furnished Ground-Floor Apartment
Just Moments from Preston Seafront

Perfectly positioned just a stone's throw from the ever-popular Preston Seafront, this beautifully presented two-bedroom ground-floor apartment offers an exceptional opportunity to enjoy coastal living with comfort, convenience, and style. Whether you're seeking a seaside base, a low-maintenance home, or a ready-to-move-into property close to the beach, this apartment delivers on every front—complete with private parking, a patio, and the rare benefit of being fully furnished.

Step Inside

Stepping inside, the property instantly feels welcoming and well considered. Offered fully furnished, the apartment has been thoughtfully arranged to maximise comfort and functionality while maintaining a light, airy atmosphere throughout. The layout flows naturally, allowing each room to feel connected yet distinct, creating a well-balanced living environment.

Lounge & Dining Room

At the heart of the home lies the lounge and dining area—a bright, sociable space designed for both relaxing and entertaining. Comfortably furnished and well proportioned, this room benefits from French doors that open directly onto the private patio area, allowing natural light to flood in and bringing the outdoors seamlessly inside. During warmer months, this connection transforms the space, creating the perfect spot for morning coffees, relaxed evenings, or entertaining guests after a day at the beach.

Kitchen

The adjoining kitchen is fully equipped, making the apartment entirely ready for immediate occupancy. With ample storage, worktop space, and appliances already in place, it caters effortlessly to both everyday cooking and more leisurely dining. The kitchen's practical layout ensures everything is within easy reach, while the presentation complements the rest of the apartment's modern, well-maintained feel.



Master Bedroom & Ensuite

The property offers two well-appointed bedrooms, both furnished and thoughtfully presented. The main bedroom is a generous double room, providing a calm and restful retreat. A standout feature is the en-suite shower room, offering added privacy and convenience. This space is ideal for creating a quiet sanctuary away from the main living areas, perfect for unwinding at the end of the day.

Bedroom Two

The second bedroom is a versatile twin room, making it equally suitable for guests, family members, or flexible use as a home office or hobby space if desired. Its size and layout ensure it remains comfortable and functional while adapting easily to changing needs.

Bathroom

Completing the internal accommodation is the family bathroom, which features a bath with shower over—ideal for both quick weekday routines and relaxing wind-downs. Finished to complement the rest of the apartment, it provides a clean, practical, and welcoming space for everyday use.

Outside

One of the most appealing external features of the apartment is the private patio. Often difficult to find in properties of this type, the patio offers a valuable outdoor extension to the living space. Whether enjoyed as a quiet place to relax, a spot for alfresco dining, or simply somewhere to enjoy fresh coastal air, it adds an extra dimension to the apartment that truly enhances lifestyle appeal.

In addition, the property benefits from private parking, a highly sought-after feature in such a prime seaside location. This practical advantage ensures stress-free arrivals and departures, particularly during busier seasons, and further adds to the convenience and desirability of the home.

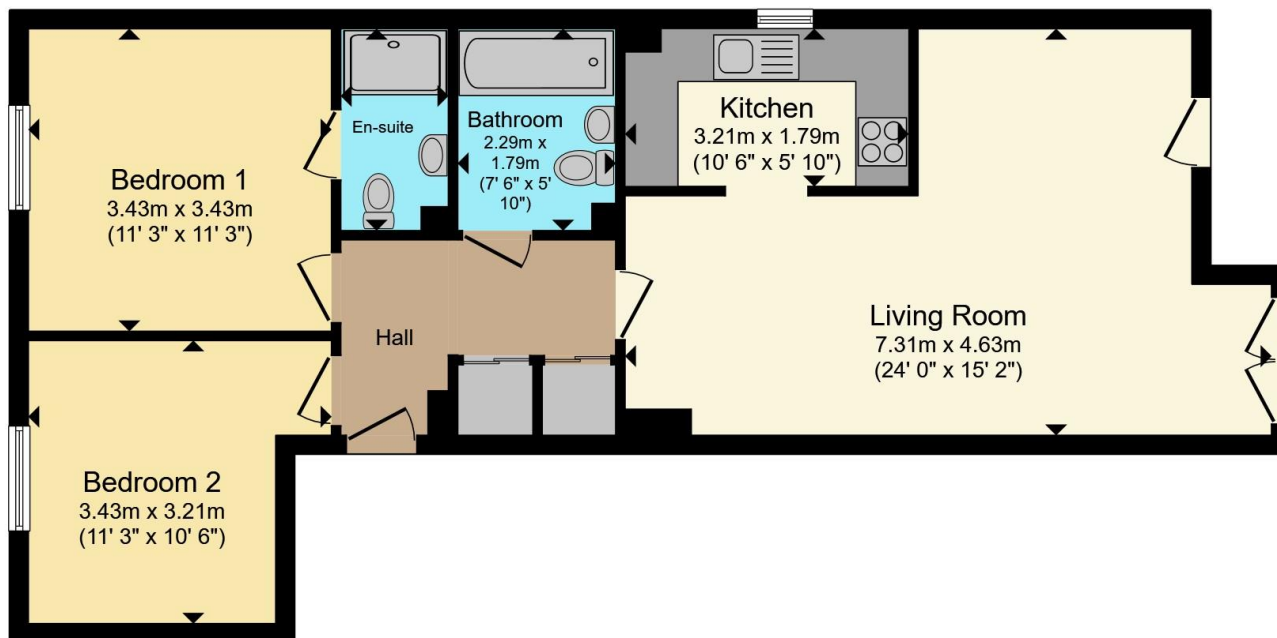
Location

Location remains one of this apartment's strongest selling points. Situated close to Preston Seafront, the property enjoys easy access to coastal walks, beaches, and open spaces while remaining well connected to nearby amenities and transport links. Local shops, cafés, and services are all within comfortable reach, ensuring day-to-day living is both simple and enjoyable.









Total floor area 68.1 m² (733 sq.ft.) approx

This floor plan is for illustrative purposes only. It is not drawn to scale. Any measurements, floor areas (including any total floor area), openings and orientation are approximate. No details are guaranteed, they cannot be relied upon for any purpose and they do not form part of any agreement. No liability is taken for any error, omission or misstatement. A party must rely upon its own inspection(s). Powered by www.propertybox.io

Connells

To view this property please contact Connells on

T 01803 400 888
E paignton@connells.co.uk

51 Hyde Road
PAIGNTON TQ4 5BP

EPC Rating: D

Council Tax
Band: Deleted

Service Charge: Ask
Agent

Ground Rent:
Ask Agent

Tenure: Leasehold

view this property online connells.co.uk/Property/PGN313483

This is a Leasehold property. We are awaiting further details about the Term of the lease. For further information please contact the branch. Please note additional fees could be incurred for items such as Leasehold packs.



1. MONEY LAUNDERING REGULATIONS Intending purchasers will be asked to produce identification documentation at a later stage and we would ask for your co-operation in order that there will be no delay in agreeing the sale. 2. These particulars do not constitute part or all of an offer or contract. 3. The measurements indicated are supplied for guidance only and as such must be considered incorrect. Potential buyers are advised to recheck measurements before committing to any expense. 4. We have not tested any apparatus, equipment, fixtures, fittings or services and it is in the buyers interest to check the working condition of any appliances.

Connells Residential is registered in England and Wales under company number 1489613, Registered Office is Cumbria House, 16-20 Hockliffe Street, Leighton Buzzard, Bedfordshire, LU7 1GN. VAT Registration Number is 500 2481 05.

See all our properties at www.connells.co.uk | www.rightmove.co.uk | www.zoopla.co.uk

Property Ref: PGN313483 - 0004