

Broadway, W13

£438 Per week

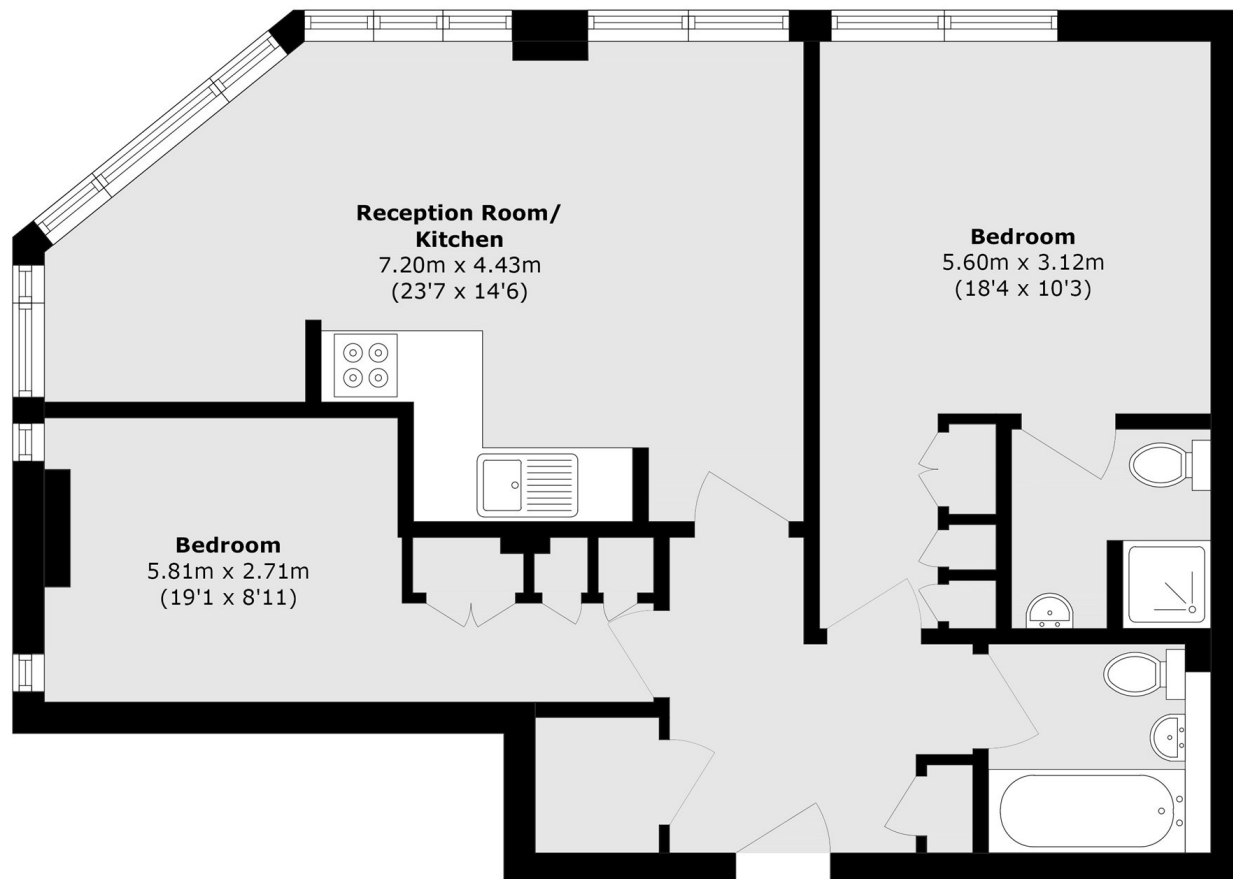
A beautifully presented two bedroom flat on the first floor of a purpose built development. The property has a large open plan kitchen/reception, two double bedrooms and two bathrooms, one en-suite.

A quarter of a mile from West Ealing Station, this property is just a 3 minute train from Ealing Broadway (central line) and just over half a mile from West Ealing mainline.

Features

- Two Bedroom
- Two Bathrooms
- Modern Throughout
- Open Plan Kitchen
- Close to Station
- Wood Flooring

Broadway, London, W13



Total area (approx.): 76.8 sq. m (826.6 sq. ft)