



## St. John's Hill, SW11

£410,000

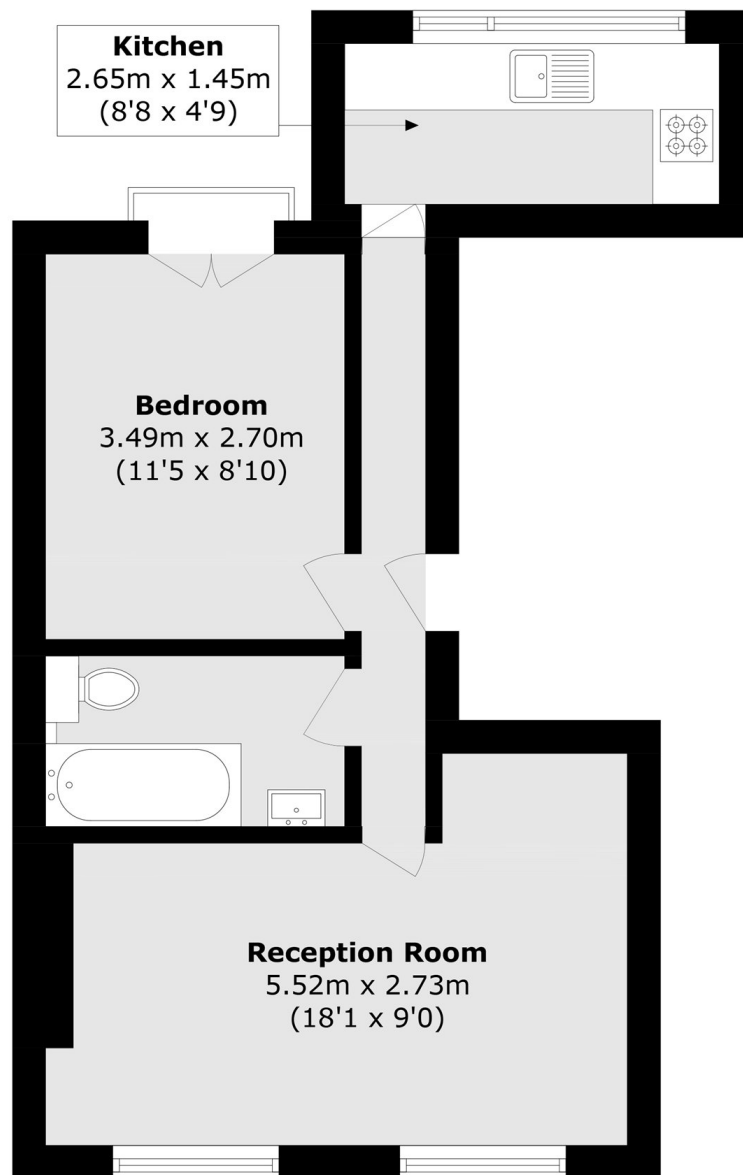
This beautifully presented one-bedroom period conversion on St John's Hill offers a spacious reception room and a separate modern kitchen, with high ceilings throughout that allow an abundance of natural light. The property further benefits from a Juliet balcony and is being sold chain-free.

St. John's Hill offers an excellent selection of independent shops, bars and restaurants while being moments from Clapham Junction, offering excellent mainline transport links alongside the popular amenities of Northcote Road and Battersea Rise.

### Features

- One Double Bedroom
- Period Conversion
- High Ceilings
- Juliet Balcony
- Prime Location
- Chain Free

# St. John's Hill, London, SW11



Total area (approx.): 39.2 sq. m (421.9 sq. ft)