



Connells

Hough Road
Walsall



Property Description

Internal viewing is highly recommended to appreciate this immaculately presented three bedroom family home. The property is conveniently positioned close to motorway links, local schools, amenities and briefly comprises of lounge, kitchen, utility, bathroom, separate w.c and rear garden.

Access Via

A front door opening into:

Entrance Hall

Having under stairs storage cupboard, stairs rising to first floor, radiator and doors to:

Kitchen

10' 3" x 9' 9" (3.12m x 2.97m)

Having a double glazed window to the front, fitted kitchen with wall and base units and work tops over, stainless steel sink and drainer, integrated oven and hob, space for appliances, plumbing for washing machine and radiator.

Lounge

14' 9" x 13' 1" (4.50m x 3.99m)

Having a double glazed window to the rear, feature fire place and radiator.

Utility/ Veranda

Having two uPVC doors to front and rear, storage cupboard, power points, boiler and double glazed window to the rear.

First Floor

Landing

Having loft access and doors to:

Bedroom One

12' 6" x 10' 10" (3.81m x 3.30m)

Having a double glazed window to the rear, radiator and storage cupboard.

Bedroom Two

12' 6" x 8' 7" (3.81m x 2.62m)

Having a double glazed window to the rear, storage cupboard and radiator.

Bedroom Three

7' 8" x 7' 7" (2.34m x 2.31m)

Having two double glazed windows to the front and radiator.

Bathroom

Having a double glazed window to the front, bath, wash hand basin, complementary tiling and radiator.

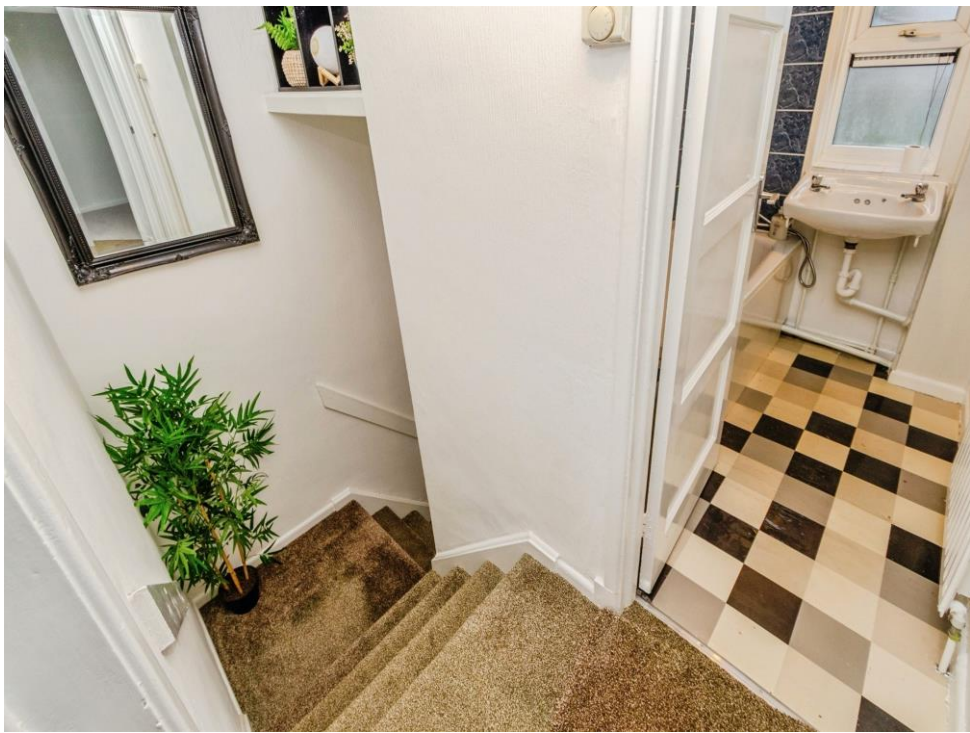
Separate W.C

Having a double glazed window to the front and low level w.c.

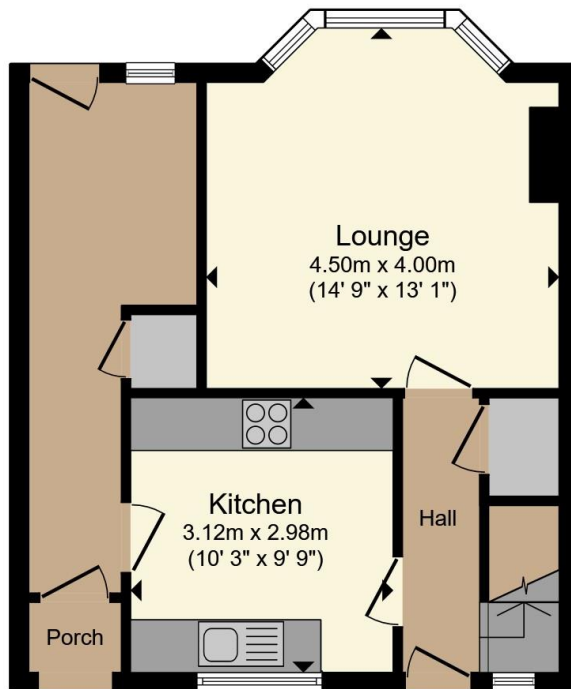
Outside

To the rear of the property is an enclosed lawned garden with panel fencing and shed.

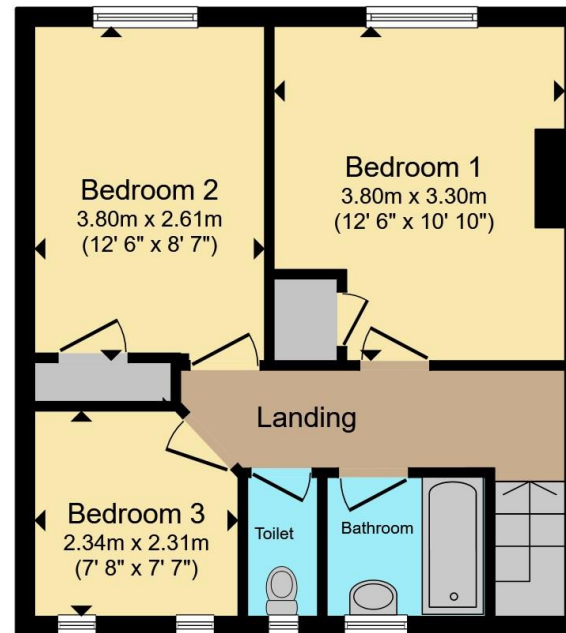








Ground Floor



First Floor

Total floor area 81.8 m² (881 sq.ft.) approx

This floor plan is for illustrative purposes only. It is not drawn to scale. Any measurements, floor areas (including any total floor area), openings and orientation are approximate. No details are guaranteed, they cannot be relied upon for any purpose and they do not form part of any agreement. No liability is taken for any error, omission or misstatement. A party must rely upon its own inspection(s). Powered by www.propertybox.io

Connells

To view this property please contact Connells on

T 01922 721 000
E walsall@connells.co.uk

57-59 Bridge Street
WALSALL WS1 1JQ

EPC Rating: Awaited
Council Tax Band: A

Tenure: Freehold

view this property online connells.co.uk/Property/WSL317698



1. MONEY LAUNDERING REGULATIONS Intending purchasers will be asked to produce identification documentation at a later stage and we would ask for your co-operation in order that there will be no delay in agreeing the sale. 2. These particulars do not constitute part or all of an offer or contract. 3. The measurements indicated are supplied for guidance only and as such must be considered incorrect. Potential buyers are advised to recheck measurements before committing to any expense. 4. We have not tested any apparatus, equipment, fixtures, fittings or services and it is in the buyers interest to check the working condition of any appliances.

Connells Residential is registered in England and Wales under company number 1489613, Registered Office is Cumbria House, 16-20 Hockliffe Street, Leighton Buzzard, Bedfordshire, LU7 1GN. VAT Registration Number is 500 2481 05.

See all our properties at www.connells.co.uk | www.rightmove.co.uk | www.zoopla.co.uk

Property Ref: WSL317698 - 0004