

**The Green Lund Driffield YO25 9TE**

£465,000

3 2 0



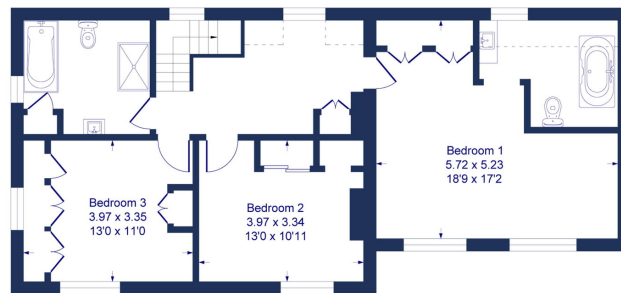
REFERENCE BA0665 Occupying a wonderful position in this highly desirable Wolds village is Jasmine Cottage; A most attractive character home that offers light and airy living accommodation throughout. Improved by my clients during their tenure to a very high standard this property presents very well indeed and offers three bedrooms to the first floor with two modern bathroom suites. The ground floor offers, a cloak room, three reception areas with potential scope for re modelling along with a modern kitchen and utility room. The rear garden is meticulously maintained and offers a good level of privacy

- Sought After Wolds Village
- Much Improved
- Modern Kitchen and Bathrooms
- Ensuite Bathroom/ Family Bathroom
- Wonderfully Landscaped Garden
- Character Detached Home
- Three reception Areas
- Three Double Bedrooms
- Cloakroom
- Garage/Parking

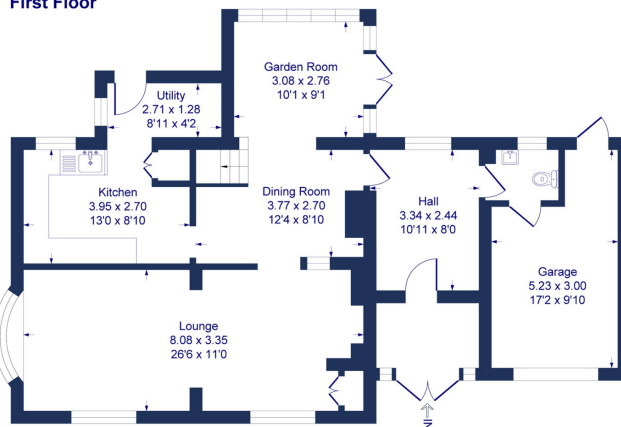


Jasmine Cottage, 45 The Green, Lund

Approximate Gross Internal Floor Area = 177.5 sq m / 1911 sq ft



First Floor



Ground Floor

Illustration for identification purposes only, measurements are approximate, not to scale.