



Anita Close East, Ipswich, IP2 0JL

welcome to

Anita Close East, Ipswich

This well-presented, semi-detached home benefits from three bedrooms, a beautiful kitchen/diner/snug, a large, South facing rear garden, off street parking for two vehicles and NO ONWARD CHAIN!!

Entrance Hall

Marble tiled effect flooring, one radiator, an understairs storage cupboard and double glazed window to the front.

Lounge

Marble tiled effect flooring, double glazed bay window to the front, one radiator, a media wall and TV point.

Kitchen/Diner/Snug

Marble tiled effect flooring, one radiator, double glazed sliding doors to the rear, a further double glazed door to the rear, eye and base level units in cream with wood effect worktop surfaces, tiled splashback, double glazed window to the side, a stainless steel one and a half bowl sink plus drainer and chrome mixer tap, fitted extractor hood and space for all appliances.

First Floor Landing

Carpet flooring, double glazed window to the side and loft hatch.

Master Bedroom

Carpet flooring, double glazed bay window to the front and one radiator.

Bedroom Two

Carpet flooring, double glazed window to the rear and one radiator.

Bedroom Three

Carpet flooring, double glazed window to the rear, a storage cupboard and one radiator.

Bathroom

Marble tiled effect flooring and walls, chrome heated towel rail, double glazed window to the front, a bath with glass screen and overhead shower, extractor fan, low level WC and wash hand basin.

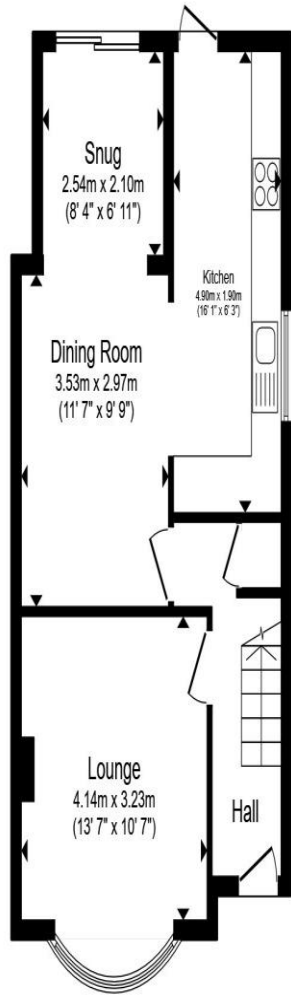
Outside:

Front Garden

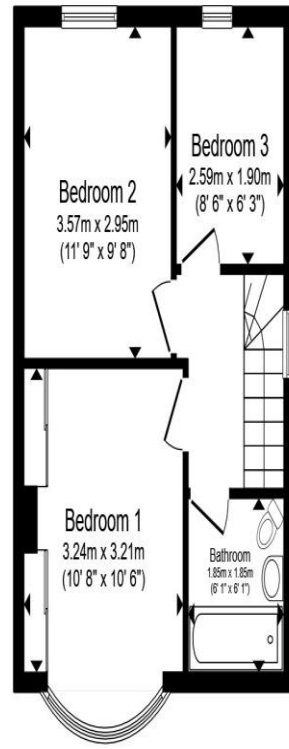
A block paved driveway, a fenced border and a side access.

Rear Garden

Large, South facing rear garden with a block paved patio seating area, a shed, fully enclosed border, a central pathway, a grassed area, flower beds and a side access.



Ground Floor



First Floor

Total floor area 84.7 m² (912 sq.ft.) approx

This floor plan is for illustrative purposes only. It is not drawn to scale. Any measurements, floor areas (including any total floor area), openings and orientation are approximate. No details are guaranteed, they cannot be relied upon for any purpose and they do not form part of any agreement. No liability is taken for any error, omission or misstatement. A party must rely upon its own inspection(s). Powered by www.propertybox.io



welcome to
Anita Close East,
Ipswich

- No onward chain
- Double bay fronted
- Three bedrooms
- Beautiful kitchen/diner/snug
- Large, South facing rear garden

Tenure: Freehold EPC Rating: C
Council Tax Band: B

offers in excess of
£300,000



view this property online williamhbrown.co.uk/Property/IPS121539



Property Ref:
IPS121539 - 0002

1. MONEY LAUNDERING REGULATIONS Intending purchasers will be asked to produce identification documentation at a later stage and we would ask for your co-operation in order that there is no delay in agreeing the sale. 2. These particulars do not constitute part or all of an offer or contract. 3. The measurements indicated are supplied for guidance only and as such must be considered incorrect. Potential buyers are advised to recheck measurements before committing to any expense. 4. We have not tested any apparatus, equipment, fixtures or services and it is in the buyers interest to check the working condition of any appliances. 5. Where an EPC, or a Home Report (Scotland only) is held for this property, it is available for inspection at the branch by appointment. If you require a printed version of a Home Report, you will need to pay a reasonable production charge reflecting printing and other costs. 6. We are not able to offer an opinion either written or verbal on the content of these reports and this must be obtained from your legal representative. 7. Whilst we take care in preparing these reports, a buyer should ensure that his/her legal representative confirms as soon as possible all matters relating to title including the extent and boundaries of the property and other important matters before exchange of contracts.

William H Brown is a trading name of Sequence (UK) Limited which is registered in England and Wales under company number 4268443, Registered Office is Cumbria House, 16-20 Hockliffe Street, Leighton Buzzard, Bedfordshire, LU7 1GN. VAT Registration Number is 500 2481 05.



william h brown



01473 226101



ipswich@williamhbrown.co.uk



16-18 Wolsey House, Princes Street, IPSWICH,
Suffolk, IP1 1QT



williamhbrown.co.uk