



# 8 St. James House Fore Street, Teignmouth

Teignmouth

Guide Price **£165,000**

# 8 St. James House Fore Street

Teignmouth

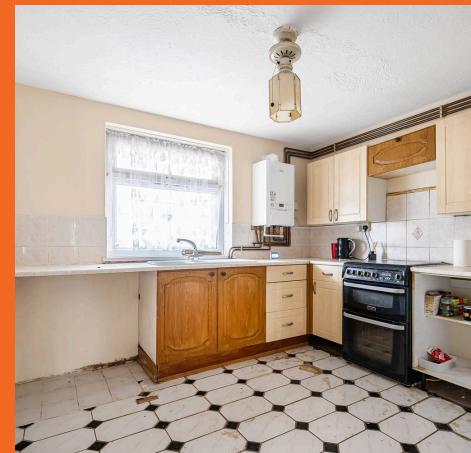
Council Tax band: B

Tenure: Leasehold

EPC Energy Efficiency Rating: C

EPC Environmental Impact Rating: B

- Require some modernisation offering an excellent opportunity for improvement located on the 1st floor apartment with lift
- Sought after Ex Local Authority Development close to town centre, seafront, railway station and supermarket
- Southerly aspect with views towards Shaldon and over the Teign Estuary
- 3 bedrooms
- Double glazing and gas central heating
- Residents car park
- Balcony
- Town centre location
- In need of some updating
- No onward chain



## 8 St. James House Fore Street Teignmouth

Council Tax band: B

Tenure: Leasehold

EPC Energy Efficiency Rating: C

EPC Environmental Impact Rating: B

- Require some modernisation offering an excellent opportunity for improvement located on the 1st floor apartment with lift
- Sought after Ex Local Authority Development close to town centre, seafront, railway station and supermarket
- Southerly aspect with views towards Shaldon and over the Teign Estuary
- 3 bedrooms
- Double glazing and gas central heating
- Residents car park
- Balcony
- Town centre location
- In need of some updating
- No onward chain





### **BALCONY**

Balcony located off the lounge/diner and enjoying lovely countryside views across the roof tops.

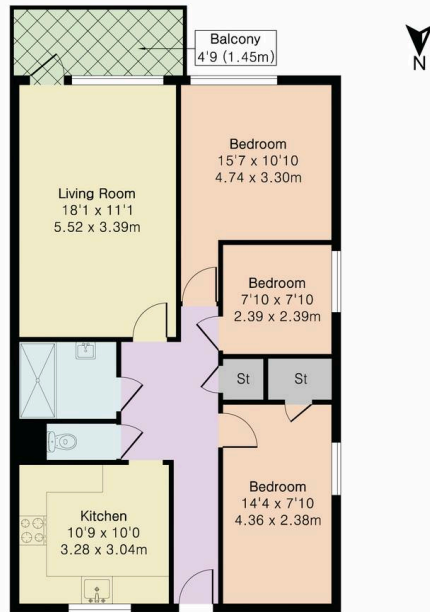
### **OFF STREET**

1 Parking Space

There is a residents car park located to the rear of the building with both allocated and visitors parking.



Approximate Gross Internal Area 836 sq ft - 78 sq m



First Floor Flat



Floor plan produced in accordance with RICS Property Measurement 2nd Edition. Although Pink Plan Ltd ensures the highest level of accuracy, measurements of doors, windows and rooms are approximate and no responsibility is taken for error, omission or misstatement. These plans are for representation purposes only and no guarantee is given on the total square footage of the property within this plan. The figure icon is for initial guidance only and should not be relied on as a basis of valuation.

Nexmove.



## Nexmove

Riviera Buildings, 3 Den Road, Devon - TQ14 8AJ

01626 681972 • [sales@nexmove.co.uk](mailto:sales@nexmove.co.uk) • [www.nexmove.co.uk/](http://www.nexmove.co.uk/)