



Youghal Close,
Pontprennau, Cardiff,
CF23 8RN



PCM
£975 PCM

2 Bedrooms
Apartment - Ground Floor

A super two bedroom ground floor apartment on this private modern development in the centre of Pontprennau. Recently decorated throughout. Convenient location within 1km of retail parks which include Asda, Waitrose, Costa Coffee and Pure Gym / 2km from M4 at J30. Allocated off road parking. Electric heating. Unfurnished. Council Tax band D. EPC rating C. Available May 2026 for initial twelve month minimum term.

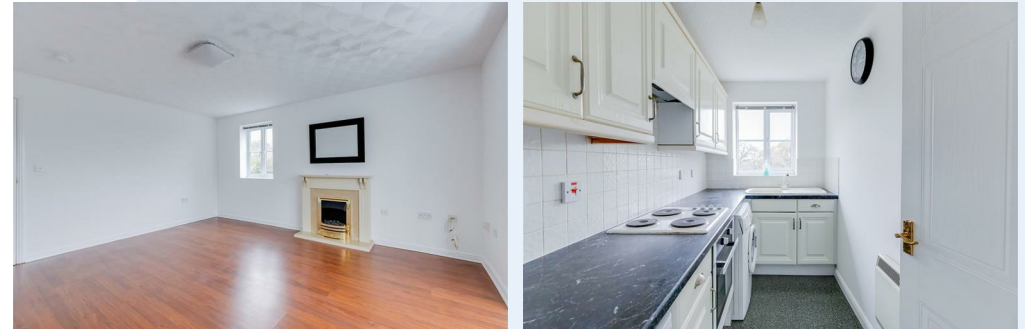
Features

- Modern Ground Floor Apartment on Small Private Development
- Two Bedrooms/Spacious Living Room
- Recently Decorated Throughout
- Unfurnished with Kitchen Appliances
- Allocated Off Road Parking/Electric Heating
- Located Conveniently - Asda, Waitrose, Costa and Pure Gym Nearby
- Within 2km of M4 at J30 / 3km to UHW
- Council Tax Band D/EPC Rating C
- Available May 2026/Minimum Twelve Month Term



Information

- Tenure:
- Council Tax Band: D
- Floor Area: 572.70 sq ft
- Current EPC Rating: C
- Potential EPC Rating: C



2 BEDROOMS



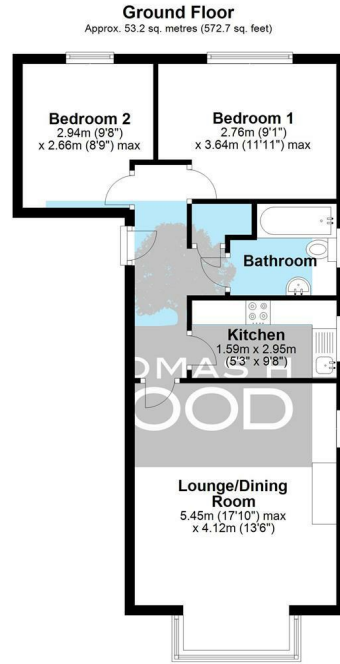
1 BATHROOMS



1 RECEPTION ROOMS



ENERGY RATING: C



Total area: approx. 53.2 sq. metres (572.7 sq. feet)



Agents Note: Whilst every care has been taken to prepare these sales particulars, they are for guidance purposes only. All measurements are approximate and for general guidance purposes only and whilst every care has been taken to ensure their accuracy, they should not be relied upon and potential buyers are advised to recheck the measurements

Energy Efficiency Rating		Current	Potential
Vary energy efficient - lower running costs			
(92 plus) A			
(81-91) B			
(69-80) C		75	80
(55-68) D			
(39-54) E			
(21-38) F			
(1-20) G			
Not energy efficient - higher running costs			
England & Wales		EU Directive 2002/91/EC	



CONTACT

sales@thomashwood.com
02920 626 252
thomashwood.com

WHITCHURCH BRANCH

14 Park Road,
Whitchurch
CF14 7BQ

RADYR BRANCH

5 Station Road,
Radyr, Cardiff
CF15 8AA