



Marc Brunel House

136 Wapping High Street, E1W

2,500 £ per month
(576.92 £ per week)

A modern 1 bedroom apartment with direct views of the river. The property is available furnished and boasts an open plan reception/kitchen, private balcony, large bedroom and modern bathroom. Further benefits residents concierge, roof terrace and is ideally located close to Wapping station.

CHESTERTONS



Marc Brunel House

136 Wapping High Street, E1W

- Modern development
- Direct river views
- One bedroom apartment
- Private balcony
- Close to Wapping station
- Residents concierge



Wapping is a unique area steeped in history and character situated along the north side of the River Thames. Although The City is within walking distance, the area is also well connected via Wapping, Tower Hill & Tower Gateway stations. The area is home to St Katharine Docks which is central London's only marina, boasting an array of bars and restaurants.

Minimum Term: months
Deposit Required: 2,884.62 £
Local Authority: Tower Hamlets
Council Tax Band: E
EPC Rating: B
Furnished

Energy Efficiency Rating		
	Current	Potential
Very energy efficient - lower running costs		
(94-100) A		
(81-93) B	83	83
(69-80) C		
(55-68) D		
(39-54) E		
(21-38) F		
(1-20) G		
Not energy efficient - higher running costs		
England, Scotland & Wales EU Directive 2002/91/EC		

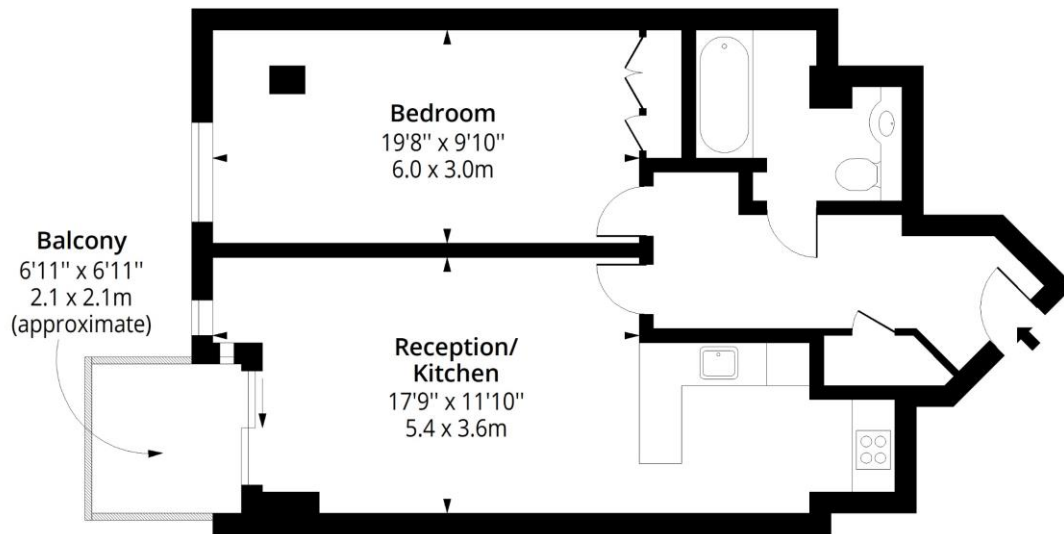
Chestertons Tower Bridge Lettings

220 Tower Bridge Road
 Tower Bridge
 London
 SE1 2UP
 towerbridgelettingsusers@chestertons.co.uk
 02073576911
 chestertons.co.uk

Additional tenant charges apply (fees apply to non-AST tenancies only)
 Tenancy Agreement Fee: £300
 References per Tenant/Guarantor: £60
 Inventory check (approx. £100 – £250 inc. VAT)
 chestertons.co.uk/property-to-rent/applicable-fees

Wapping High Street, E1W

Approx. Gross Internal Area 708 Sq Ft - 65.77 Sq M
Approx. Gross Balcony Area 47 Sq Ft - 4.37 Sq M



Ground Floor

Floor Area 708 Sq Ft - 65.77 Sq M



Measured according to RICS IPMS2. Floor plan is for illustrative purposes only and is not to scale. Every attempt has been made to ensure the accuracy of the floor plan shown, however all measurements, fixtures, fittings and data shown are an approximate interpretation for illustrative purposes only. 1 sq m = 10.76 sq feet.

lpaplus.com

Date: 6/8/2024



This paper is
100% recyclable