



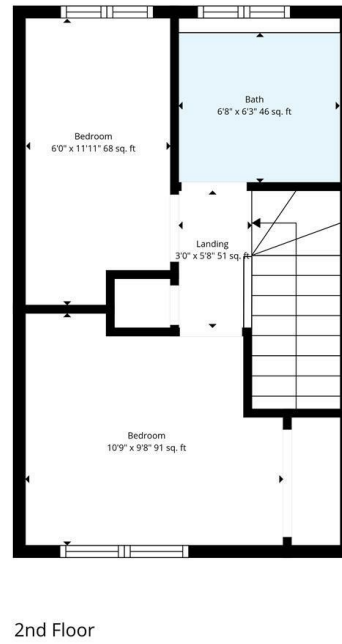
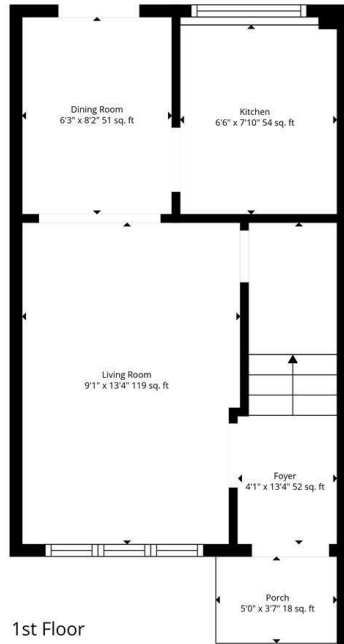
Howard Morley
& Sons

PCM

£1,500 PCM

Little Manor Gardens

Cranleigh, GU6 8BF



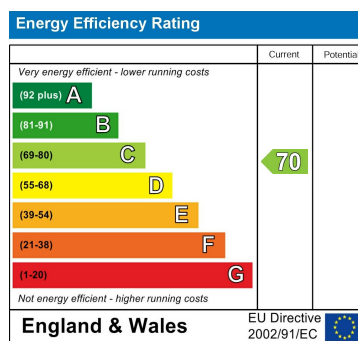
TOTAL: 574 sq. ft
 1st floor: 287 sq. ft, 2nd floor: 287 sq. ft
 EXCLUDED AREAS: PORCH: 18 sq. ft, WALLS: 49 sq. ft

Floor Plan Created By Cubicasa App. Measurements Deemed Highly Reliable But Not Guaranteed.

2

1

1



Agents Note: Whilst every care has been taken to prepare these particulars, they are for guidance purposes only. All measurements are approximate and are for general guidance purposes only and whilst every care has been taken to ensure their accuracy, they should not be relied upon and potential buyers/tenants are advised to recheck the measurements

Howard Morley & Sons

OFFICE ADDRESS
 276 High Street
 Guildford
 Surrey
 GU1 3JL

OFFICE DETAILS
 01483 575 304
 lettings@hmorley.co.uk
 hmorley.co.uk