



A GOLDSTONE PRIVATE SALE

Hopgood Tower

A one-bedroom apartment in Kidbrooke Village

£360,000

LEASEHOLD · 1 BEDROOM · 1 BATHROOM · 569 SQ FT

THE RESIDENCE

Hopgood Tower, SE3



Goldstone is delighted to present this bright and well-proportioned one-bedroom apartment, occupying a third-floor position within Hopgood Tower – one of the landmark buildings on Peglar Square in the highly regarded, Berkeley-built Kidbrooke Village development. Offered to the market chain-free, the apartment combines a generous open-plan living space, a large private balcony and high-quality finishes throughout, moments from Kidbrooke Station and the green open spaces that define this award-winning neighbourhood.

OVERVIEW

A bright and elegant home

The apartment opens into a spacious open-plan living, dining and kitchen area, filled with natural light and opening directly onto a large private balcony.

BEDROOMS	BATHROOMS	INTERIOR	TENURE
1	1	569 sq ft	Leasehold

A full range of integrated appliances, sleek handleless cabinetry and stone worktops feature in the kitchen, while engineered wood flooring runs through the living area. The double bedroom benefits from extensive built-in wardrobes, complemented by a contemporary bathroom and a separate utility room.



Open-plan living, dining and kitchen



Kitchen with integrated appliances

INTERIORS

Gallery

A selection of interior views from across the apartment.



Double bedroom with floor-to-ceiling window



Built-in wardrobe storage



Contemporary bathroom



Hopgood Tower, Kidbrooke Village

AT A GLANCE

Key features

- Third-floor one-bedroom apartment with lift access
- Approx. 569 sq ft / 52.88 sq m internal area
- Large private balcony approx. 17'5" x 15'9"
- Open-plan living, dining and kitchen area
- Double bedroom with built-in wardrobes
- Contemporary bathroom with bath and overhead shower
- Separate utility / storage room
- Floor-to-ceiling windows and excellent natural light
- Integrated kitchen with stone worktops
- Within the Berkeley-built Kidbrooke Village
- Kidbrooke Station (Zone 3) – approx. 16 mins to London Bridge
- Offered to the market chain-free

THE VILLAGE

Life in Kidbrooke Village

Kidbrooke Village is one of South East London's most successful regeneration developments, built by Berkeley across acres of landscaped parkland, water features and open green space. Peglar Square forms its vibrant centre, with a Sainsbury's, independent cafés, restaurants and everyday amenities on the doorstep, while Cator Park and the Tarn nature reserve offer extensive walking and outdoor space. Kidbrooke Station sits directly on Peglar Square, providing fast and frequent Southeastern services into Central London – reaching London Bridge in as little as 16 minutes, with onward connections to Charing Cross and Cannon Street. Blackheath, Greenwich and Westcombe Park are all close by.

ACCOMMODATION

The apartment

LIVING, DINING & KITCHEN

A spacious open-plan reception of approximately 19'8" x 13'1" (6.00m x 4.00m) with floor-to-ceiling windows and sliding doors opening directly onto the private balcony. The kitchen is finished with handleless cabinetry, stone worktops and integrated appliances.

BEDROOM

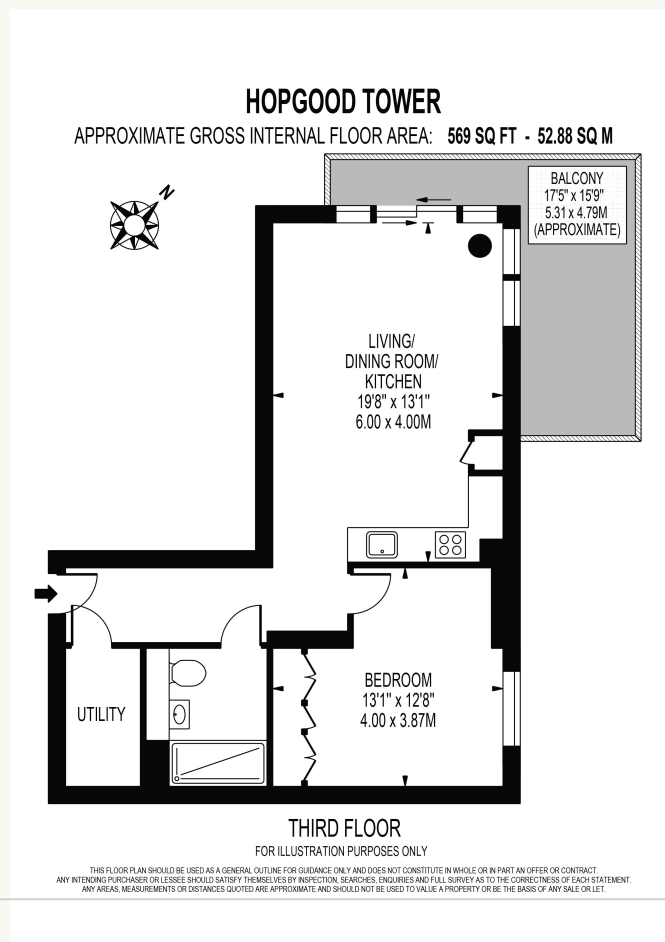
A well-proportioned double bedroom of approximately 13'1" x 12'8" (4.00m x 3.87m) with an extensive run of built-in wardrobes and quality carpet.

BATHROOM & UTILITY

A contemporary, fully tiled bathroom with bath, overhead shower and heated towel rail, plus a separate utility room with space and plumbing for a washer/dryer.

PRIVATE BALCONY

A generous private balcony of approximately 17'5" x 15'9" (5.31m x 4.79m) – a rare amount of outside space, ideal for entertaining or relaxing.



PRACTICAL

The essentials

Tenure	Leasehold
Interior	569 sq ft / 52.88 sq m
Bedrooms	1
Bathrooms	1
Outdoor	Private balcony approx. 17'5" x 15'9"
Local authority	Royal Borough of Greenwich
Council tax	Available on request
EPC	Available on request
Price	£360,000

OUTDOOR

Private balcony



Floor-to-ceiling doors opening onto the private balcony



A GOLDSTONE PRIVATE SALE

We would be delighted to tell you more

To arrange a private viewing of Hopgood Tower, please contact Goldstone Global Ltd at the details below.

GOLDSTONE GLOBAL LTD

Contact Matthiew Meng

Telephone 07864 314 020

Email matthiew.meng@thegoldstone.co.uk

Office Floor 6, 29-30 Cornhill, City of London, EC3V 3ND, UK

These particulars are prepared as a general guide. They do not constitute, nor form part of, any offer or contract. Areas, measurements and distances are approximate. Photographs, plans and descriptions are for illustration only. Prospective purchasers are advised to verify all matters before committing to a transaction.
