



MILES ESTATE AGENTS

**2 Rogers Walk Cotford St. Luke
Taunton TA4 1HY £190,000**



****PRICE IMPROVEMENT**** An immaculately presented detached 2 bedroom Coach House in this ever popular modern village 5 miles North West of Taunton, close to the wonderful Quantock Hills. Good size living/dining room, compact kitchen and spacious bathroom. Perfect 'lock up and leave' with garage and parking space - early viewing highly recommended. Freehold Council Tax Band B EPC : D





Features:

- Entrance with stairs to 1st floor
- Good size open plan living/dining room
- Kitchen
- 2 double bedrooms
- Spacious bathroom
- Useful garage
- Off road parking
- Freehold
- Council Tax Band B
- EPC : D



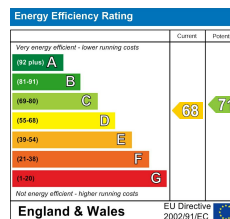
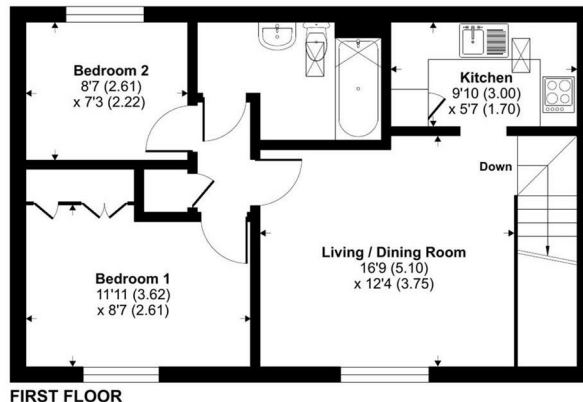
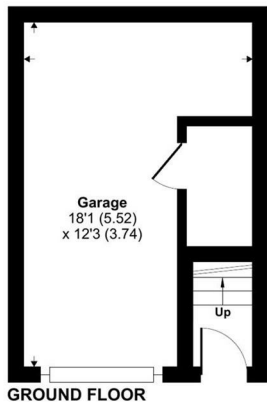
Rogers Walk, Cotford St. Luke, Taunton, TA4

Approximate Area = 547 sq ft / 50.8 sq m

Garage = 195 sq ft / 18.1 sq m

Total = 742 sq ft / 68.9 sq m

For identification only - Not to scale



Viewings strictly through the selling agents:

Miles Estate Agents

2 Piffin Lane, Bishops Lydeard, Taunton, Somerset, TA4 3AS

Tel: 01823 470 500

lydeard@milesestateagents.co.uk

www.milesestateagents.co.uk

Floor plan produced in accordance with RICS Property Measurement 2nd Edition, incorporating International Property Measurement Standards (IPMS Residential). © richcom 2025. Produced for Miles Alexander Limited T/A Miles Estate Agents. REF: 1356688



rightmove

OnTheMarket.com

MILES ESTATE AGENTS

BEST
ESTATE AGENT GUIDE
2019 : EXCEPTIONAL
SALES