





Accommodation

A beautifully presented three-bedroom semi-detached house, tucked away in a quiet cul-de-sac setting and revealing an immaculate interior, being neutrally decorated and light and airy throughout.

This lovely property is extended to the rear, now offering a spacious kitchen/dining/family area which is south facing, making the most of the sunlight. A fully enclosed rear garden, single garage and parking for two cars all add to the appeal, with this charming family home.

Situated in the highly sought after village of Kirkby Malzeard, located approximately 6 miles from the cathedral city of Ripon. Kirkby Malzeard itself offers a number of amenities, including a shop, public house, garage/petrol station, butchers and primary school.

Entering the property, there is a welcoming entrance hall, with a WC and stairs rising to the first floor. There is a good size lounge which offers views over the rear garden and cosy wood-burning stove with stone fireplace. The kitchen/diner/family room is a great open plan space for family living with access back to the lounge. The kitchen comes fitted with a range of modern units and appliances, there is also a good size cupboard, providing handy storage. Patio doors give access from the dining/family area to the lovely rear garden, allowing lots of natural light, giving an airy feeling throughout. To the first floor, there is a landing with an airing cupboard and loft access, spacious main bedroom with fitted wardrobes and part tiled ensuite shower room, two further double bedrooms and the part tiled house bathroom, fitted with a white three piece suite. The property is double glazed, and oil central heating is in place.

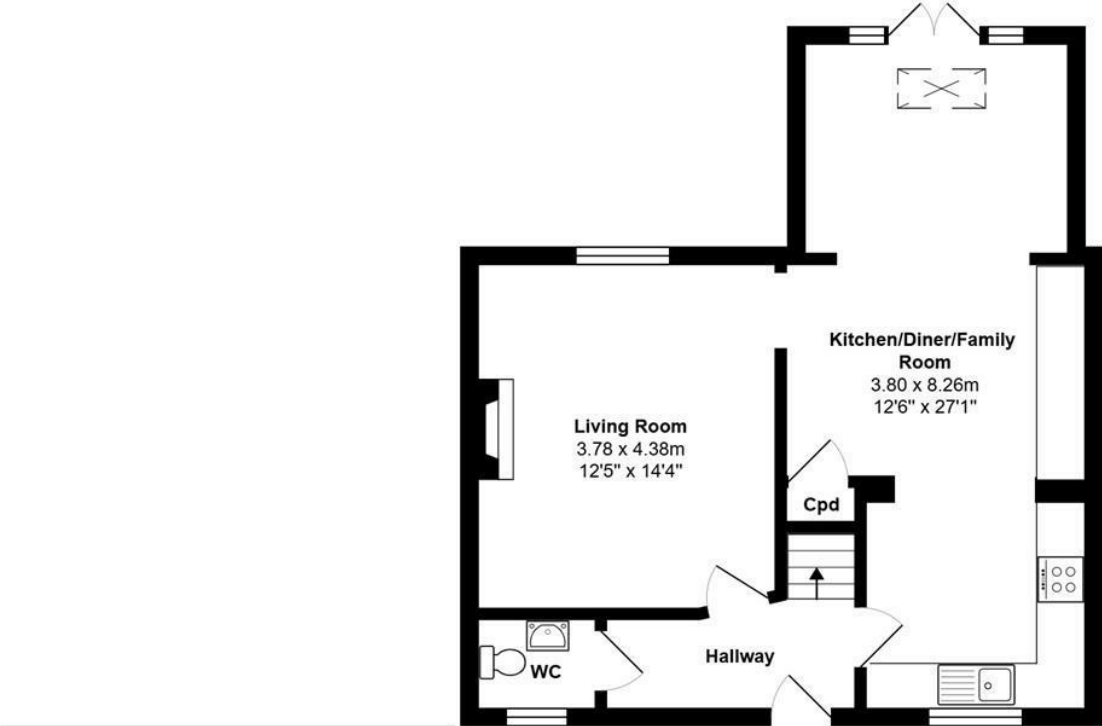
Externally, there is block paved driveway parking, also giving access to the single garage. The oil tank is neatly concealed, whilst gated access leads to the side of the house and rear garden. The house sits on a lovely plot, with the serene south facing rear garden offering a high degree of privacy, perfect for buyers with children or pets. The garden is mostly laid to lawn with stocked flower beds, whilst a patio entertainment area provides great space for outdoor living.

This delightful property is a must-view for those seeking a peaceful village life, whilst being in close-proximity to amenities and schools.

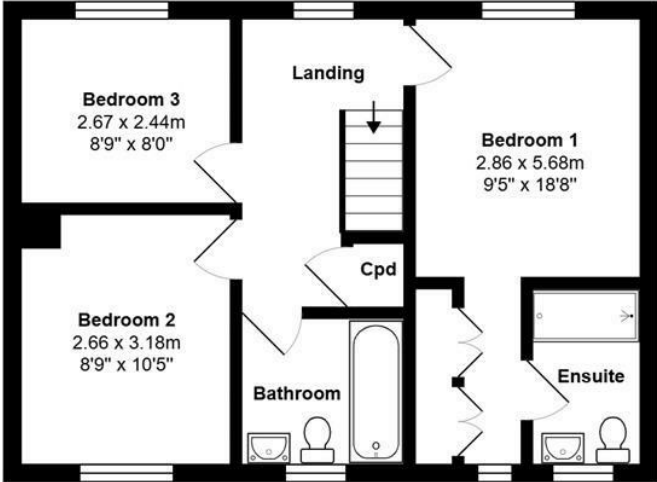




Floorplan



Ground Floor



First Floor

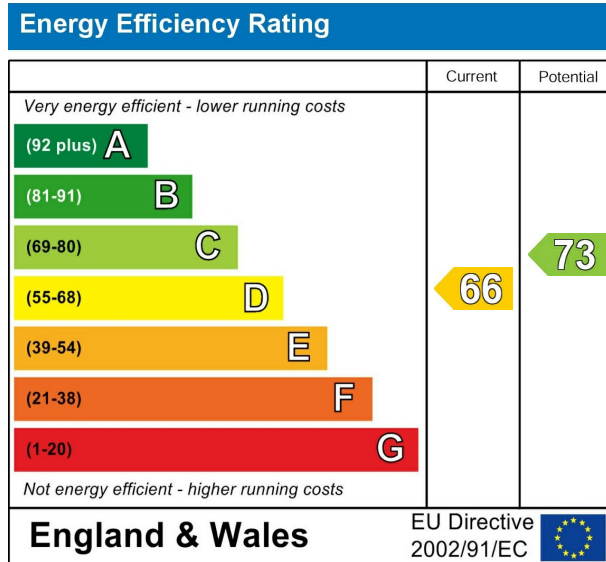


Garage





EPC



VIEWING BY APPOINTMENT ONLY - 01765 602233 - sales@davislund.co.uk - www.davislund.co.uk

MONEY LAUNDERING REGULATIONS 2003 - Intending purchasers will be asked to produce identification and proof of financial status when an offer is received. We would ask for your co-operation in order that there will be no delay in agreeing the sale.

Davis & Lund Ltd trading as Davis & Lund, registered office: 5a Kirkgate, Ripon, HG4 1PA. Registered in England No 10034416. Registered for VAT No 243 2008 51

Davis & Lund Ltd have prepared these property details on the seller’s behalf. Davis & Lund Ltd have taken reasonable steps to check the content, but no information should be taken as a statement of fact. All measurements are approximate and should be taken as a guide, potential purchasers should satisfy themselves as to the accuracy. Floorplans are produced as a guide and they are not to scale. All fixtures and fittings are not included in the sale, unless stated. Heating systems, electrics, services and appliances have not been tested and no warranty is given to their working order

