



**Guide Price**  
**£275,000**

**Freehold**

3x  1x  1x 

**Cayser Drive,  
Kingswood, Maidstone,  
Kent, ME17**

**OVER 60?**

Secure this property  
for up to **59% less!**

*Wards*  
Helping you move forwards





## Main features

- **Excellent size rear garden, ideal for entertaining**
- **Driveway with garage too, ideal for parking or storage**
- **Semi-rural location, with countryside nearby, ideal for dog walking**
- **Exciting opportunity to improve internally**
- **Potential to extend, subject to usual planning consents**

## Accommodation

### GROUND FLOOR

Entrance Hall  
Lounge/Diner: 16'9 x 10'11 (5.11m x 3.33m)  
Kitchen: 11'4 x 10'7 (3.46m x 3.23m)

### FIRST FLOOR

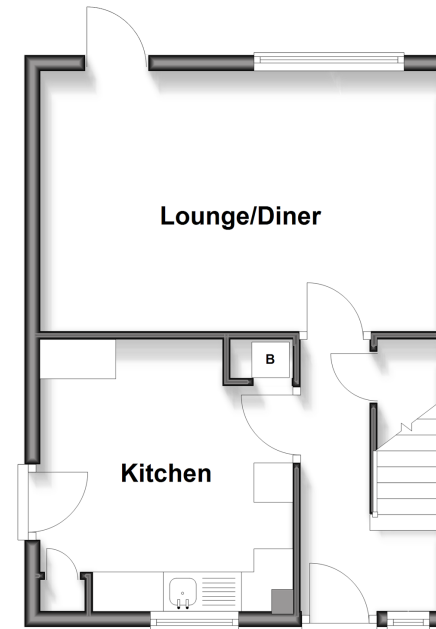
Landing  
Bedroom 1: (L-shaped) 10'11 x 7'7 (3.33m x 2.31m) plus 1'5 x 1'2 (0.43m x 0.36m)  
Bedroom 2: 9'5 x 8'6 (2.87m x 2.59m)  
Bedroom 3: 8'7 x 7'10 (2.62m x 2.39m)  
Bathroom: 6'10 x 5'6 (2.08m x 1.68m)

### OUTSIDE

Garage: 20'1 x 8'1 (6.13m x 2.47m)  
Driveway  
Front and Rear Gardens

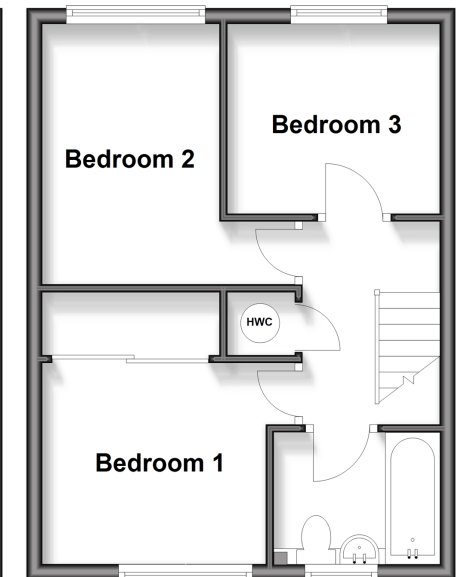
### Ground Floor

Approx. 35.0 sq. metres (377.0 sq. feet)



### First Floor

Approx. 35.0 sq. metres (377.0 sq. feet)



**Call Bearsted - 01622 730955 ■ [wardsofkent.co.uk](http://wardsofkent.co.uk)**

■ Legal advice should be taken to verify fixtures/fittings, planning, alterations and/or lease details  
■ Through a Homewise Home For Life Plan people aged 60+ can secure this property for up to 59% less, by purchasing a Lifetime Lease

■ Appliances & services are untested, dimensions are approximate and floor plans are not to scale



12329336/20260110/SG/DF