



Mayall Road, Herne Hill, SE24

2 bedroom flat - conversion for sale

£650,000

Share of Freehold

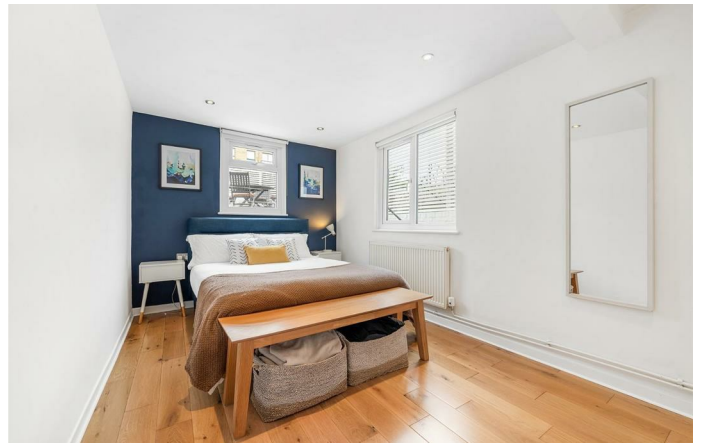
Property Details

A charming two double bedroom garden flat arranged across two levels of an attractive Victorian townhouse on the desirable and tree-lined Mayall Road in Herne Hill. Beautifully presented throughout, the home offers a wonderful balance of character, contemporary styling and generous outdoor space. To the front, a bright reception room is filled with natural light from a large bay window, with bespoke shelving and cupboards set within the alcoves. The second bedroom is positioned quietly to the rear with fitted wardrobes and a leafy outlook. Downstairs, a stylish kitchen features contemporary shaker-style cabinetry, sleek worktops, integrated appliances and a breakfast bar, with large glazed doors opening directly onto the private garden terrace. The garden is generously sized with decking and slatted fencing, creating a private space ideal for outdoor dining and entertaining. The principal bedroom overlooks the garden, and there is also a separate utility room, plus a modern family bathroom with both a bathtub and walk-in shower.

Features

- Two double bedrooms
- Private rear garden
- Split-level, over 800 square feet
- Separate utility room
- Stylish kitchen
- Brockwell Park a five-minute stroll
- Herne Hill centre a six-minute walk
- Brixton a ten-minute walk
- Excellent transport options - Victoria Line, Overground and Trains
- Share of freehold

Council tax band C EPC rating D (68)





Mayall Road, Herne Hill, SE24

Mayall Road, SE24
2 Bedroom Flat

APPROXIMATE GROSS INTERNAL AREA: 802 SQ FT / 74.5 SQ M



While we try our very best, floor plans are produced as a guide only and we take no responsibility for the precise accuracy with which any property is represented.

Mayall Road, Herne Hill, SE24

