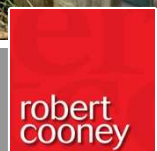




3 Glencoe Terrace Trull, Taunton TA3 7JY

£325,000



In the heart of the sought-after village of Trull is this 3 double bed roomed mid-terraced period cottage arranged over 3 floors with original period features, garden to front and good sized established garden to rear.





Features

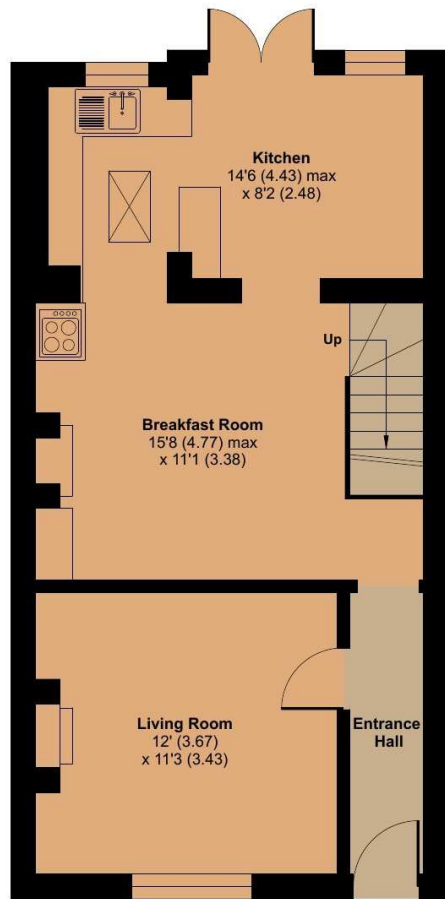
- Entrance Hall
- Living Room with woodburner
- Kitchen / Breakfast Room with woodburner and French doors to garden
- Master Bedroom with fitted wardrobes
- Bedroom 3 with fitted wardrobe
- Family Bathroom
- Further double bedroom on 2nd floor with Velux window and access to eaves storage
- Garden to front and enclosed established garden to rear with useful shed
- Gas central heating
- Council tax band C
- What3words:
///coping.before.amazed



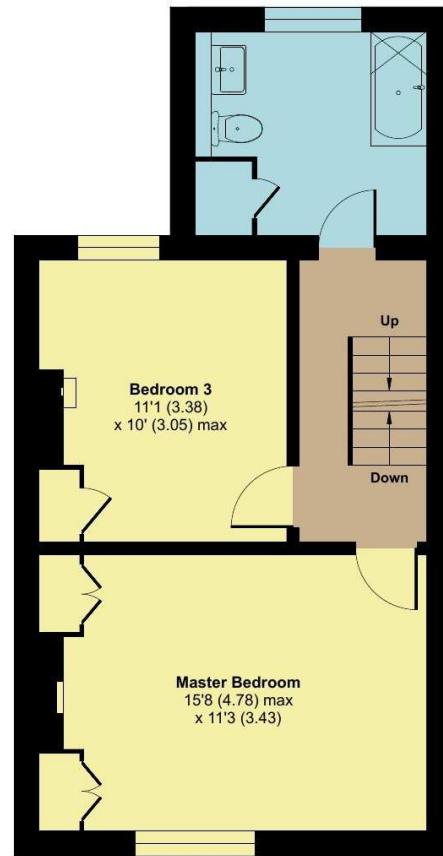
3 Glencoe Terrace, Trull, Taunton, TA3 7JY

Approximate Area = 1089 sq ft / 101.1 sq m

For identification only - Not to scale



GROUND FLOOR



FIRST FLOOR



SECOND FLOOR



Viewing strictly through the selling agents:

Robert Cooney

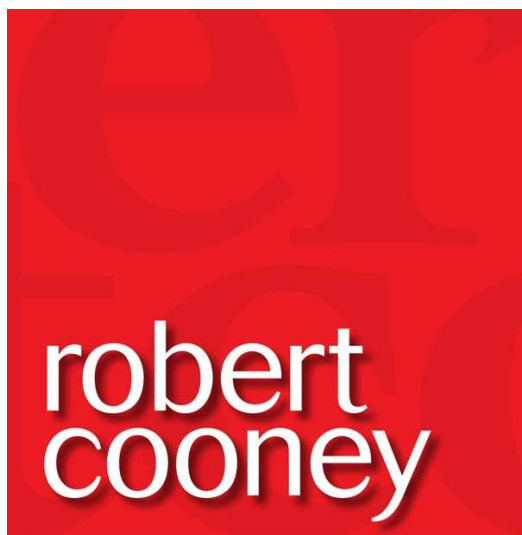
Corporation Street, Taunton, Somerset TA1 4AW

Telephone 01823 230 230

taunton@robertcooney.co.uk

www.robertcooney.co.uk

Floor plan produced in accordance with RICS Property Measurement 2nd Edition, Incorporating International Property Measurement Standards (IPMS2 Residential). © nichecom 2025. Produced for Robert Cooney. REF: 1383267



For clarification, we wish to inform prospective purchasers that: these particulars are set out as a general outline only for the guidance of intended purchasers, and do not constitute, nor constitute part of, an offer or contract; all descriptions, dimensions, references to condition and necessary permission for use and occupation, and other details, are given without responsibility and any intending purchasers should not rely on them as statements or representation of fact, but must satisfy themselves by inspection or otherwise as to the correctness of each of them; no person in the employment of Robert Cooney has any authority to make or give any representation or warranty whatever in relation to this property; we have not carried out a detailed survey nor tested the services, appliances and specific fittings.