



OAKMEAD ROAD, SW12

£675,000

- Three Bedrooms
- Central Balham
- No Onward Chain
- Own Front Door
- Private South Facing Garden
- EPC Rating: D





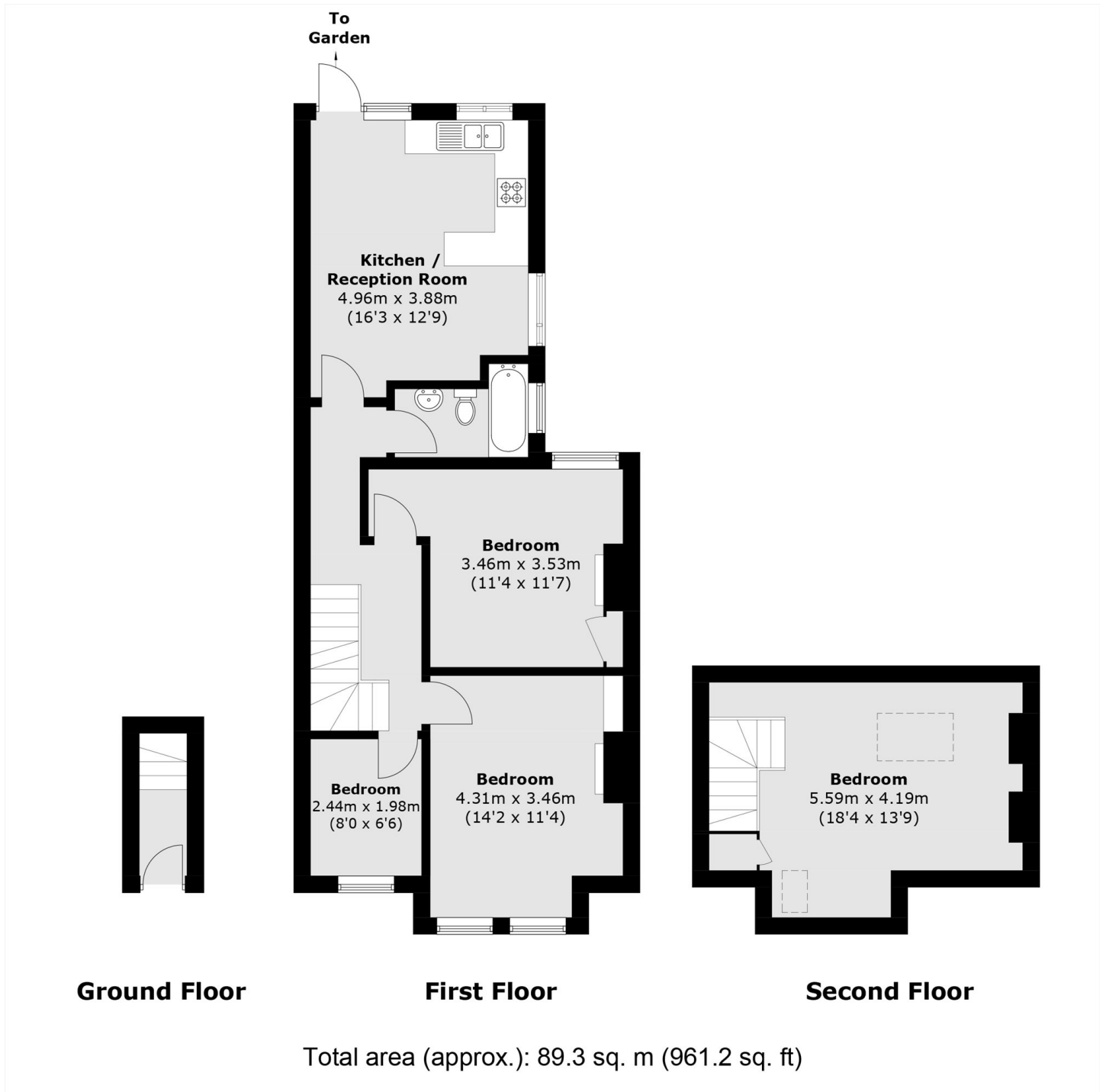
ABOUT THE HOME

A three bedroom split level Victorian maisonette moments from Balham Station. The property offers a south facing garden, further potential to extend the loft (STPP) and no onward chain.

Oakmead Road is a residential road just moments from Balham mainline and underground stations as well as all of the shops, bars and restaurants local to the area.






JACKSONS BALHAM

8-11 Balham Station Road,
 London, SW12 9SG
 Sales: 020 8675 6555
 Lettings: 020 8675 6565

Energy Rating: We aim to make our particulars both accurate and reliable. However they are not guaranteed; nor do they form part of an offer or contract. If you require clarification on any points then please contact us, especially if you're traveling some distance to view. Please note that appliances and heating systems have not been tested and therefore no warranties can be given as to their good working order.