



Cairnfield Avenue, NW2

£1,600,000

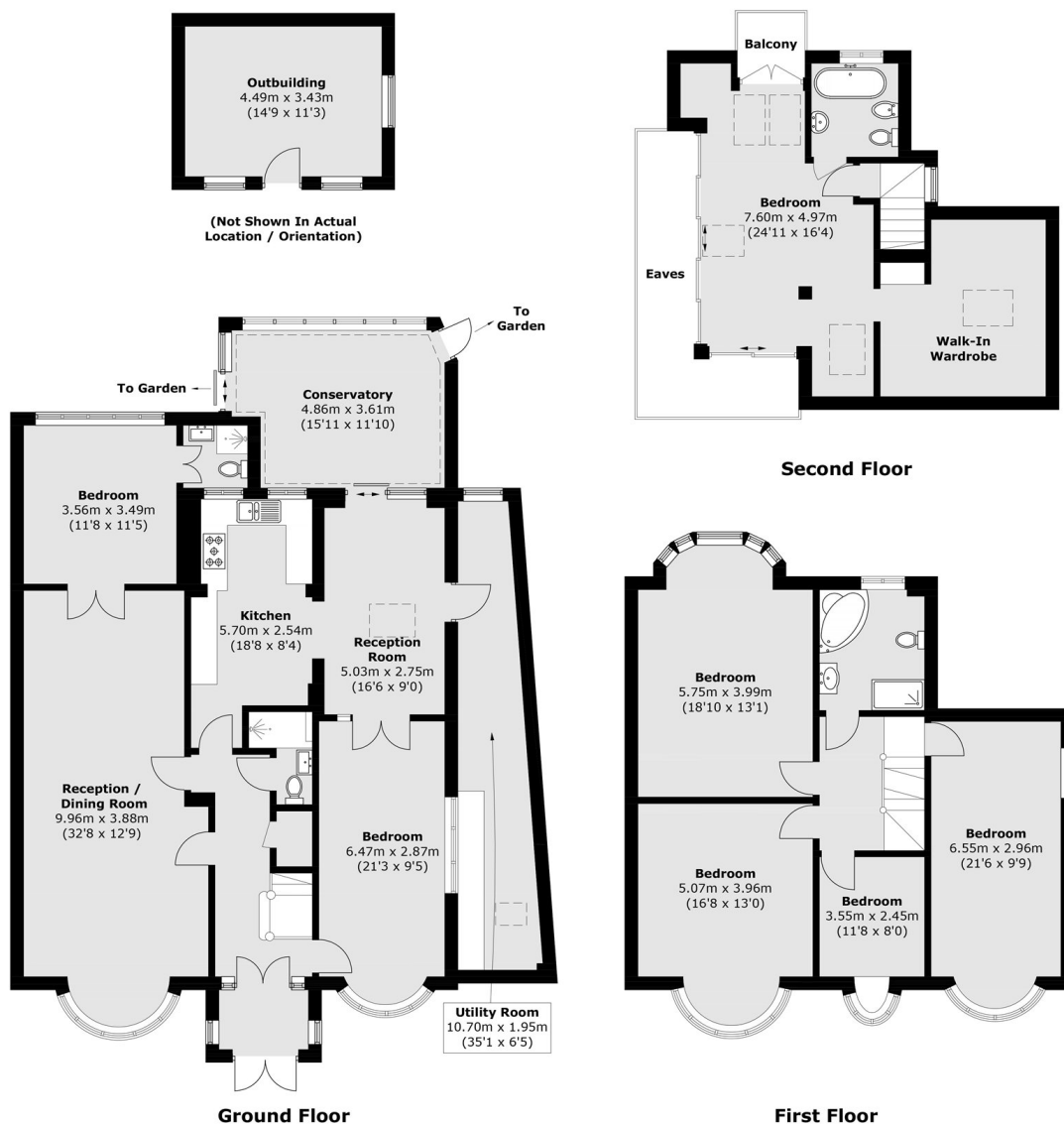
An impressive detached family home extending to approximately 3,063 sq ft, offering generous and versatile living accommodation ideal for modern family life. This substantial home boasts seven bedrooms, four bathrooms, a large private garden, a conservatory, a large store and a utility room.

Cairnfield Avenue is situated just moments from an array of amenities and the popular 86 acre Gladstone Park. The North Circular (A406) is located nearby connecting to the M1 motorway and the A41 offering easy access in and out of London.

Features

- Detached Family Home
- Gated Entrance
- Seven Bedrooms
- Four Bathrooms
- Outbuilding
- Private Parking

Cairnfield Avenue, London, NW2



Approx Internal Area: 284.6 sq. m (3,063.4 sq. ft)
(Excluding Eaves)

Outbuilding: 15.5 sq. m (166.8 sq. ft)

Balcony: 2.3 sq. m (24.7 sq. ft)

Dexters

Cricklewood
28-30 Cricklewood Broadway
London
NW2 3HD
Sales
020 7794 7710

Energy Rating: D. We aim to make our particulars both accurate and reliable. However they are not guaranteed; nor do they form part of an offer or contract. If you require clarification on any points then please contact us, especially if you're traveling some distance to view. Please note that appliances and heating systems have not been tested and therefore no warranties can be given as to their good working order.

RICS Regulated
Estate Agent
and Letting Agent

dexters.co.uk