



Raynham, Norfolk Crescent, Hyde Park, W2

Asking Price £1,799,500, Leasehold - Share of Freehold

NAPIER WATT

T: 0207 935 0011

E: enquiries@napierwatt.co.uk

W: napierwatt.co.uk

35 Berkeley Square, Mayfair, London, W1J 5BF







Description

Situated on the ninth floor of the sought-after Raynham building on Norfolk Crescent, W2, this well-presented lateral apartment offers 1,555 sq ft of thoughtfully arranged living space.

Boasting four generously sized bedrooms and a spacious south-west facing reception dining room, the property is flooded with natural light through large windows that frame impressive open views. The apartment benefits from lift access, a porter, and access to beautifully maintained private communal gardens. Ideally located near Connaught Village, Hyde Park, and Paddington station, this home combines tranquility and convenience in one of Central London's most desirable areas.

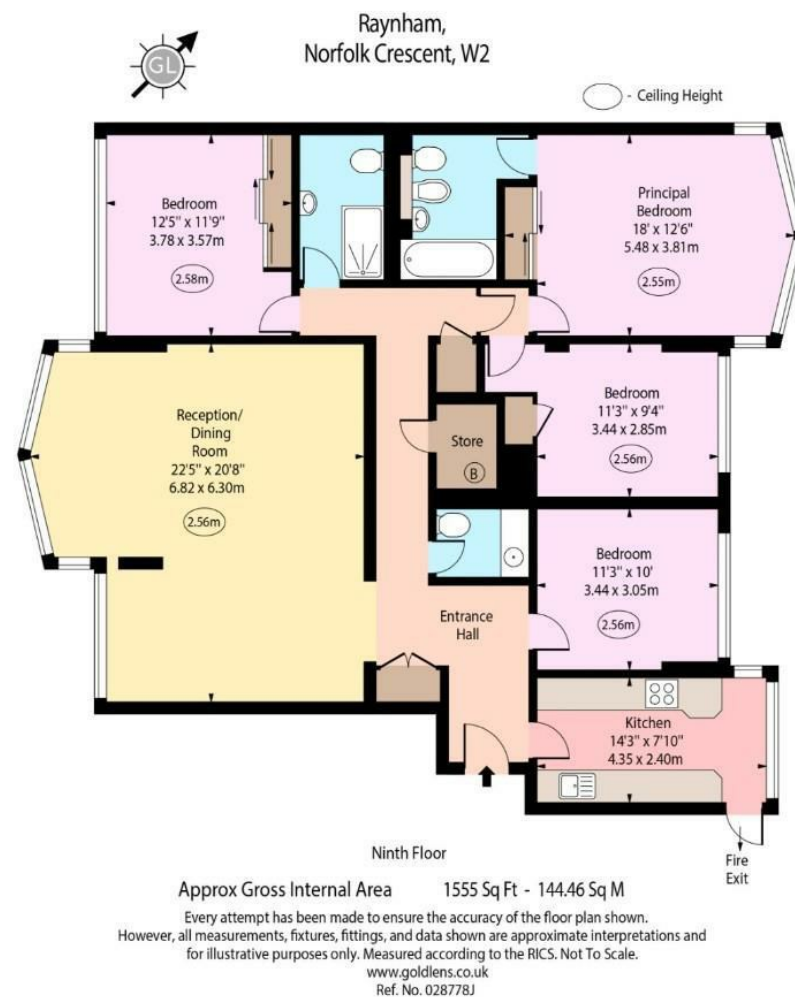
EPC Rating C.

Key Features

- 24 HOUR PORTER
- COMMUNAL GARDENS
- LOVELY VIEWS TO FRONT AND REAR
- PASSENGER LIFT
- SHARE OF FREEHOLD
- IN NEED OF SOME UPDATING

Terms

Leasehold/Share of Freehold: 977 Years Remaining.
Service Charge: £16,100 INC Res Fund.



IMPORTANT: We would inform prospective purchasers that these sales particulars have been prepared as a general guide only. A detailed survey has not been carried out, nor the services, appliances and fittings tested. Room sizes should not be relied upon for furnishing purposes and are approximate. If floor plans are included, they are for guidance only and illustration purposes only and may not be to scale. If there are any important matters likely to affect your decision to buy, please contact us before viewing the property.