

CHESTERTONS





Kildare Gardens

Notting Hill, W2 5JS

“ *An immaculate and completely refurbished five bedroom townhouse with internal lift and private patio finished to an incredible condition throughout.* ”

£5,000 per week / £21,667 per month

5



5



2,917
sqft





Property Description

Chestertons are delighted to present this outstanding and immaculate presented brand new five bedroom family home in the heart of Notting Hill on Kildare Gardens.

The house has been completely re-designed from the ground up, consisting of Italian marble, hard wood flooring, air conditioning throughout, passenger lift, and private rear patio.

Entertaining space is spread over the ground and first floors with direct access to the private rear patio from the ground floor. Sleeping accommodation (five bedrooms) is set over the second, third and lower ground floors. The principle bedroom occupies the second floor, complete with walk through walk robe and large ensuite bathroom.

From high-end kitchen appliances to state-of-the-art technology, this property has been thoughtfully designed to provide a very high standard of living.

Nestled in a prestigious neighbourhood moments from Westbourne Grove this house strikes the perfect balance between tranquillity and access to nearby amenities. Viewings strictly by Chestertons.





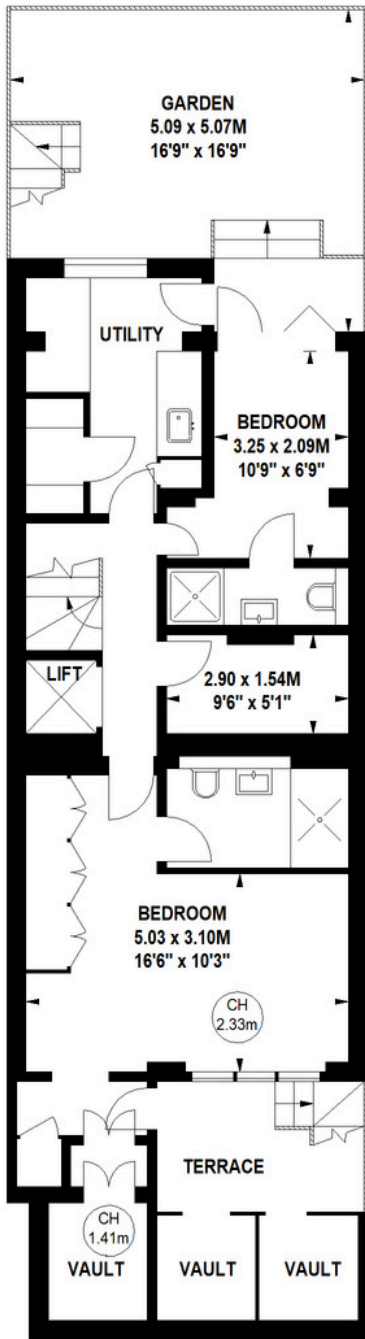


Kildare Gardens, W2

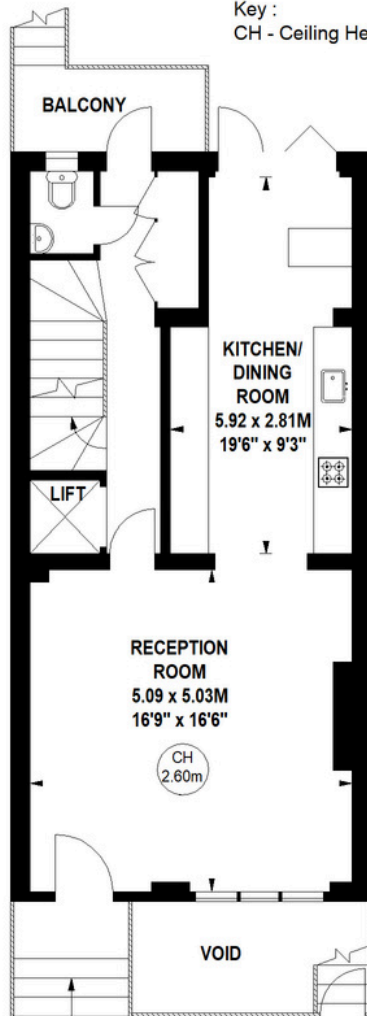
Approximate gross internal area
271.01 sq m / 2917 sq ft
(Excluding External Vaults)

External Vaults
5.20 sq m / 56 sq ft

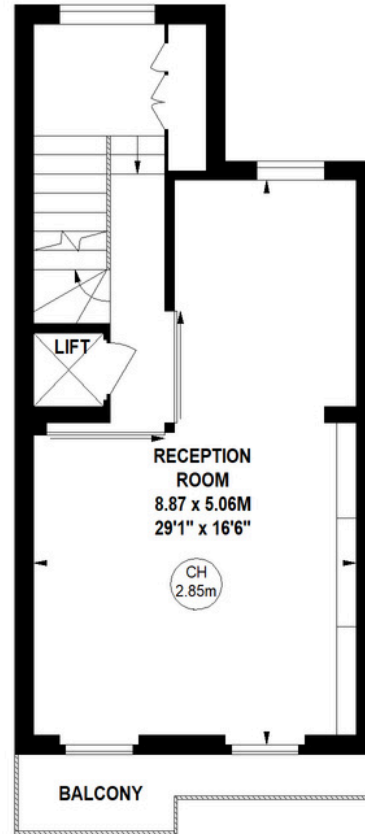
Key :
CH - Ceiling Height



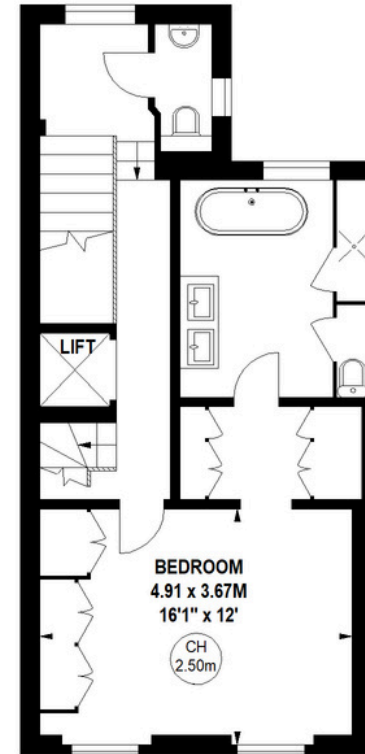
Lower Ground Floor



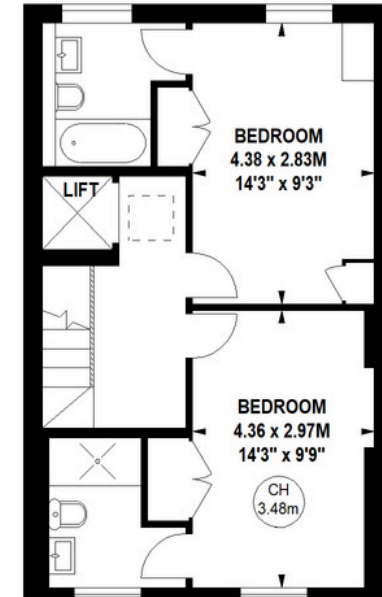
Ground Floor



First Floor



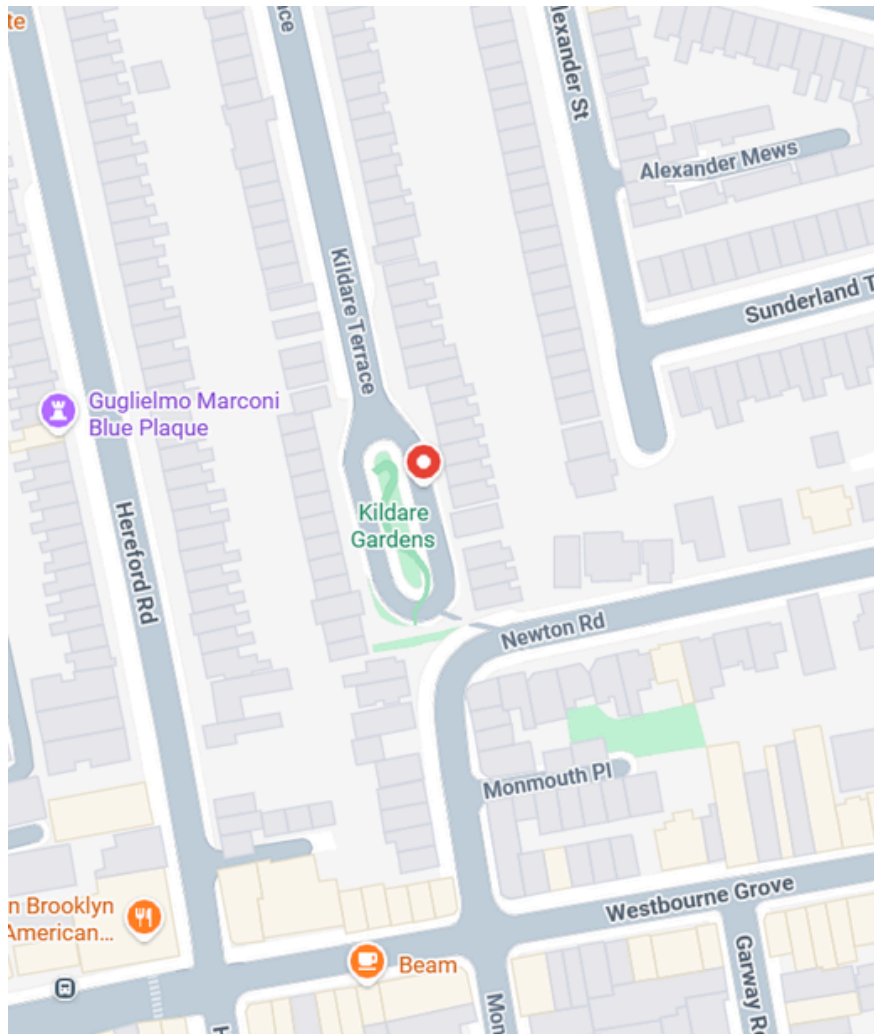
Second Floor



Third Floor

Not to scale, for guidance only and must not be relied upon as a statement of fact.
All measurements and areas are approximate only

Property Location



EPC

Energy Efficiency Rating		
	Current	Potential
Very energy efficient - lower running costs		
(92+) A		
(81-91) B		
(69-80) C		
(55-68) D		65
(39-54) E		
(21-38) F	25	
(1-20) G		
Not energy efficient - higher running costs		
England, Scotland & Wales	EU Directive 2002/91/EC	

Additional tenant charges apply (fees apply to non-AST tenancies only)

Tenancy Agreement Fee: £300

References per Tenant/Guarantor: £60

Inventory check (approx. £100 – £250 inc. VAT)

[chestertons.co.uk/property-to-rent/applicable-fees](https://www.chestertons.co.uk/property-to-rent/applicable-fees)

Chestertons Notting Hill

30 Ledbury Road

London

W11 2AB

[chestertons.co.uk](https://www.chestertons.co.uk)