



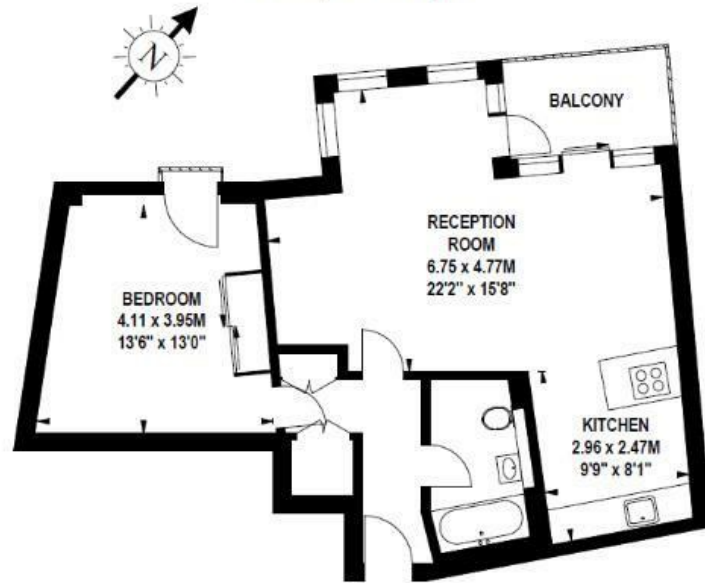
Hepworth Court, Grosvenor Waterside, Gatliff Road, Sloane Square SW1W 8QN

£795,000

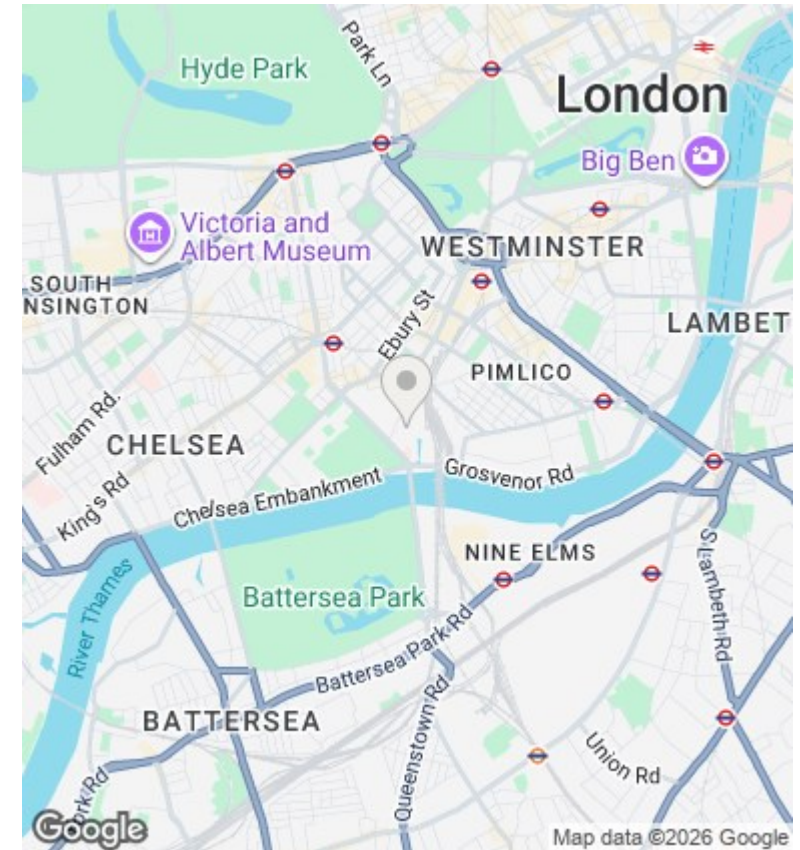
- 24/7 CONCIERGE
- PRIVATE BALCONY
- RESIDENCE GYM/SPA
- MOMENTS AWAY FROM BATTERSEA PARK AND BATTERSEA POWERSTATION
- VIDEO VIEWING AVAILABLE
- ALLOCATED PARKING SPACE
- ONSITE RESTAURANT AND FOOD SHOP
- NEWLY REFURBISHED TO HIGH STANDARDS
- 1 BEDROOM 1 BATHROOM
- WALKING DISTANCE TO SLOANE SQUARE AND VICTORIA TUBE STATIONS

Hepworth Court, SW1

Approximate gross internal area
59.92 sq m / 645 sq ft



Fourth Floor



Viewings

Viewings by arrangement only.
Call 02077225022 to make an appointment.

Council Tax Band

B

EPC Rating:

B

Energy Efficiency Rating		
	Current	Potential
Very energy efficient - lower running costs		
(92 plus) A		
(81-91) B	85	86
(69-80) C		
(55-68) D		
(39-54) E		
(21-38) F		
(1-20) G		
Not energy efficient - higher running costs		
England & Wales	EU Directive 2002/91/EC	