



116 St. Marys Road, Market Harborough, LE16 7DX

▲
**ANDREW
GRANGER & CO**
└─

Part of

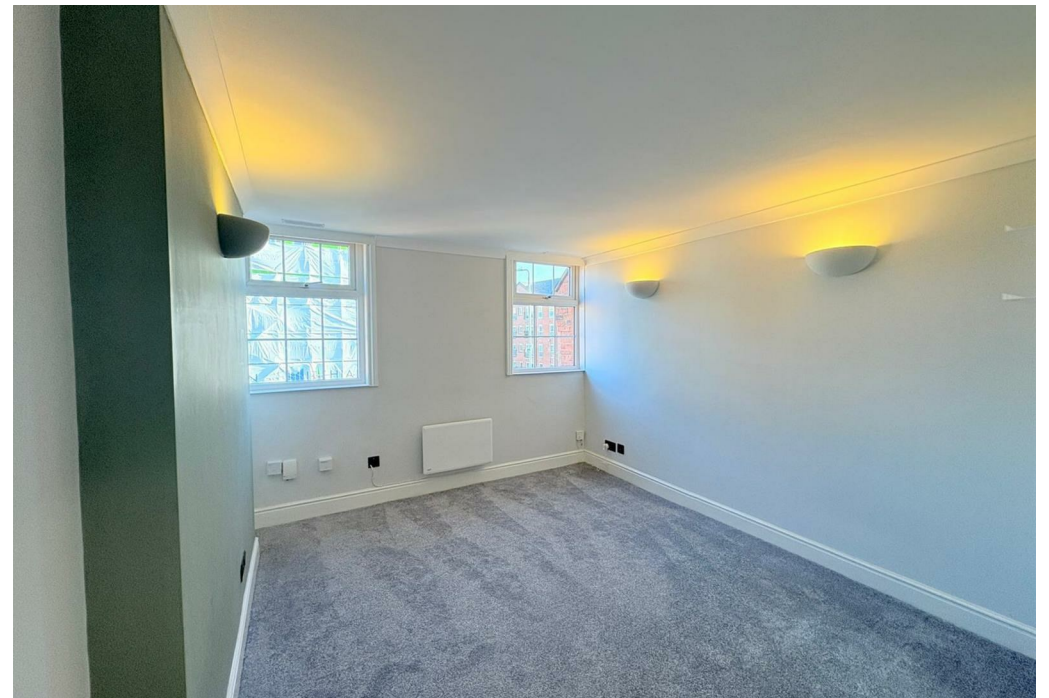
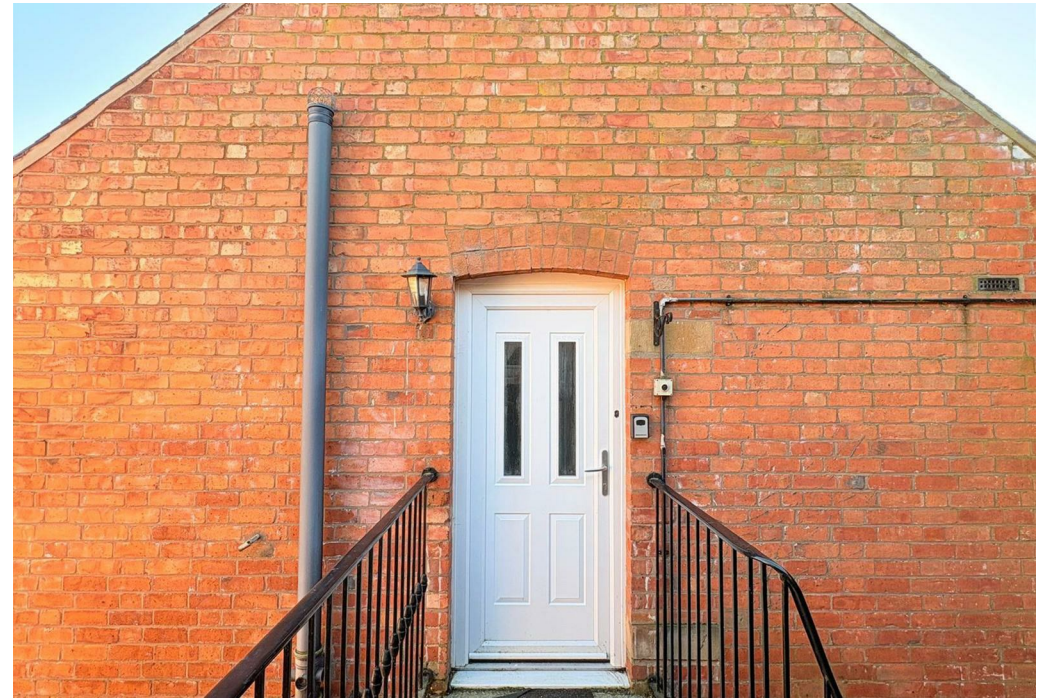
**SHELDON
BOSLEY**
KNIGHT

LAND
AND
PROPERTY
PROFESSIONALS

Property Description

A well-presented one-bedroom flat located within the popular Hampton Court complex in Market Harborough. The property has been recently refurbished and offers modern, comfortable living throughout. Accommodation includes a bright living area, a contemporary kitchen, a spacious double bedroom and a modern bathroom. Further benefits include off-road parking for one vehicle, close proximity to local shops, and an excellent location within walking distance of Market Harborough town centre and the train station, making it ideal for commuters. This modern flat would be perfectly suited to a professional individual or couple looking for a convenient and well-located home. Off road parking for one vehicle. Unfurnished. EPC D. Council Tax A. Rent £825pcm. Deposit £951. Available start of January on a fixed term six-month contract with the option to renew.







Key Features

- One bedroom modern flat
- Kitchen
- Double bedroom
- Lounge
- Off road parking for one vehicle
- Unfurnished
- Close to the train station and town centre
- EPC D. Council Tax A
- Rent £825pcm. Deposit £951
- Available start of January on a fixed term six-month contract with the option to renew.

£825 PCM