



22 Tattersall Road, Whittingham
£235,000

**Holdens**
ESTATE AGENTS



22 Tattersall Road

Whittingham, Preston

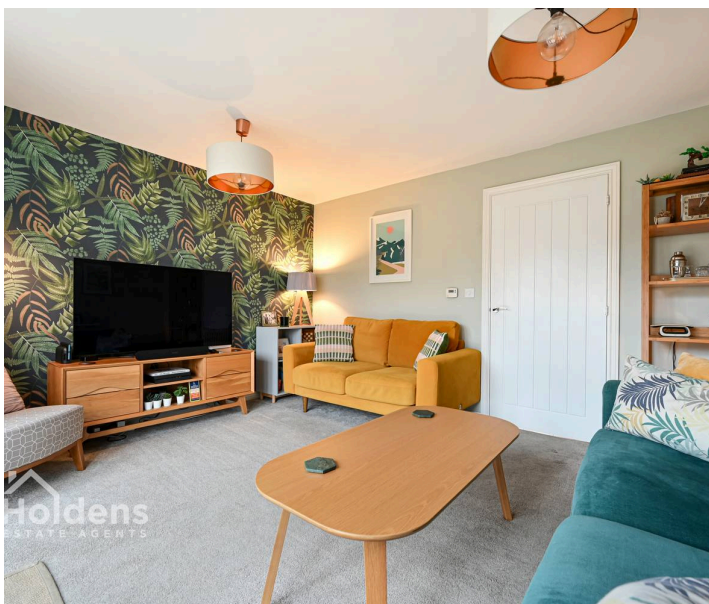
Stylish three bedroom semi-detached home over three floors with master suite, driveway, modern decor, and village location. Ideal for families or professionals. Excellent transport links. Council Tax band: D

Tenure: Freehold

EPC Energy Efficiency Rating: B

EPC Environmental Impact Rating: B

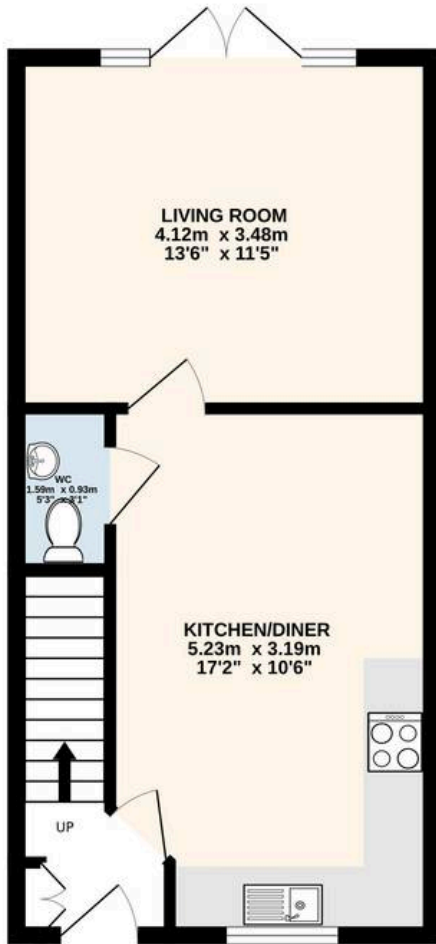
- Extremely well presented viewing highly recommended
- 3 Bedrooms
- Master bedroom with en suite and dressing room
- Modern fitted kitchen and diner
- Downstairs WC
- Gardens to the front and rear
- Family Bathroom
- Driveway with EV charging
- Desirable location - in Whittingham with village appeal
- Good commuter links and public transport



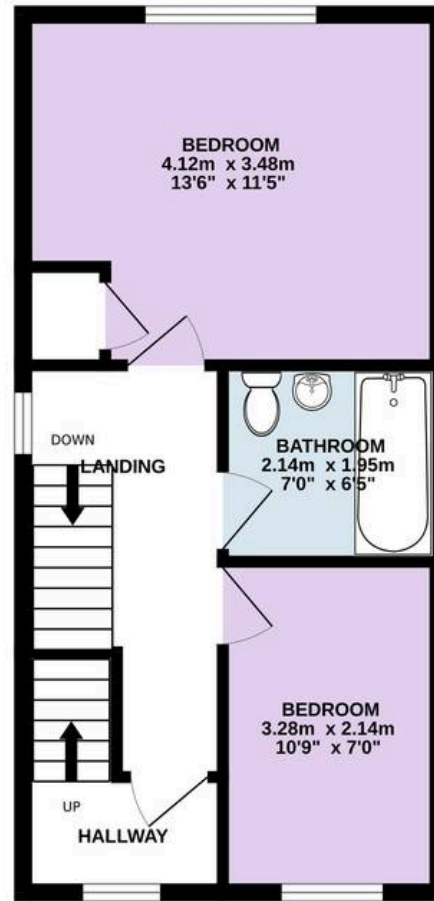




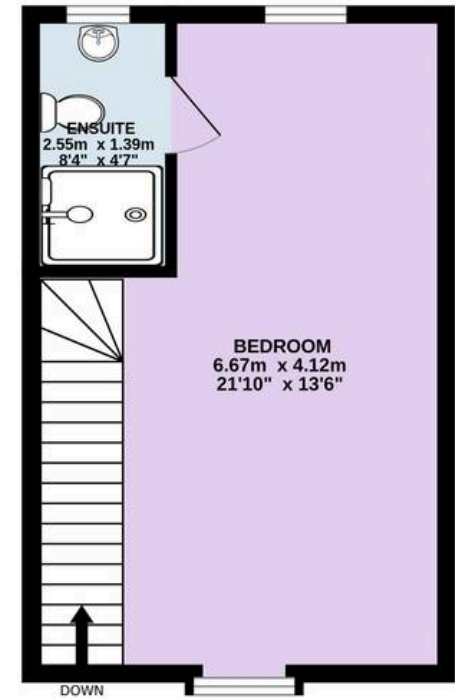
GROUND FLOOR
35.9 sq.m. (386 sq.ft.) approx.



1ST FLOOR
35.9 sq.m. (386 sq.ft.) approx.



2ND FLOOR
27.1 sq.m. (291 sq.ft.) approx.



TOTAL FLOOR AREA : 98.8 sq.m. (1064 sq.ft.) approx.

Every attempt is made to ensure accuracy, however all measurements are approximate. This plan is for illustrative purposes only and is not to scale.
Made with Metropix ©2026



Holdens
ESTATE AGENTS

Holdens Longridge

66 Derby Road, Longridge – PR3 3FE

01772 233380

longridge@holdens.co.uk

www.holdens.co.uk/

Disclaimer: All information such as plans, dimensions, and details about the property's condition or suitability is provided in good faith and believed to be accurate, but should not be relied upon without independent verification. Buyers or tenants must carry out their own checks. Appliances and systems haven't been tested. It's strongly advised to get professional inspections before making any commitments. No employee or agent of Holdens Estate Agents is authorised to make promises or guarantees about the property. These details are for general guidance only and do not form part of any contract. All discussions with Holdens Estate Agents are subject to contract.