

**12 Keaton Road  
Ivybridge  
Devon  
PL21 9DH  
Guide Price £179,950**

  
MILLINGTON TUNNICLIFF

12 Keaton Road  
Ivybridge  
Devon  
PL21 9DH



2



1



1



B



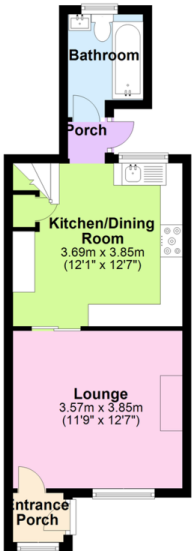
D 65



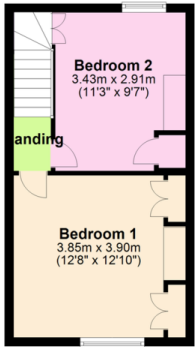
692.8  
SQFT

FLOORPLAN

Ground Floor  
Approx. 34.8 sq. metres (374.4 sq. feet)



First Floor  
Approx. 29.6 sq. metres (318.5 sq. feet)



Total area: approx. 64.4 sq. metres (692.8 sq. feet)

Guide Price £185,000

SUMMARY

A charming two-bedroom cottage ideally located within easy walking distance of the town centre. This delightful home features a generously sized rear garden and offers well-proportioned accommodation comprising an entrance porch, a welcoming lounge with a wood-burning stove, a fitted kitchen/dining area, and a ground-floor bathroom. Upstairs, there are two spacious bedrooms. Additional benefits include gas central heating, double glazing, and permit parking is available on the road. EPC D 65

Perfect First Time Buy Or Investment Property | Double Glazing | Gas Central Heating | Permit Parking Available | Good Sized Garden To The Rear | Downstairs Bathroom | Kitchen/Diner | Lounge With Woodburning Stove | Close Walking Distance To The Town & Amenities | Two Bedroom Cottage

CONTACT

19 Fore Street  
Ivybridge  
Devon PL21 9AB

EMAIL

info@millingtontunnicliff.co.uk

TEL

01752 896020

www.millingtontunnicliff.co.uk

