



## Alexandra Tower, 19 Princes Parade, Liverpool

£995 PCM

This is your chance to live in a prime waterfront location, right on Princes Dock in Liverpool. This iconic and imposing development has a range of 1 and 2-bedroom apartments available and is in an ideal location for students and commuters alike.

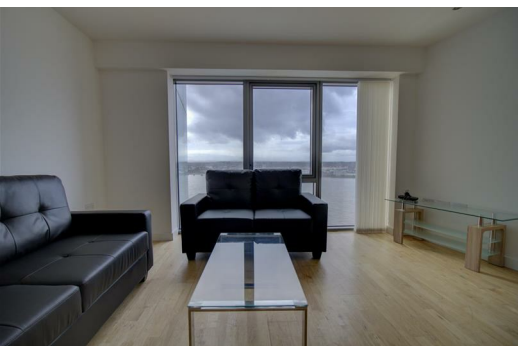
This apartment is absolutely spot-on. Inside you'll find a bright open-plan kitchen/lounge/dining room with huge windows. The kitchen is super-sleek with wooden flooring, white cabinets, chrome handles and an integrated hob/oven. The bedrooms are good sized doubles with plush carpeting underfoot - the perfect haven to relax away from the hustle and bustle of the city - and the modern, tiled bathrooms are equally as luxurious.

A short stroll from your apartment takes you into the heart of Liverpool, where you'll have more bars, restaurants, eateries and shops than you could shake a stick at.

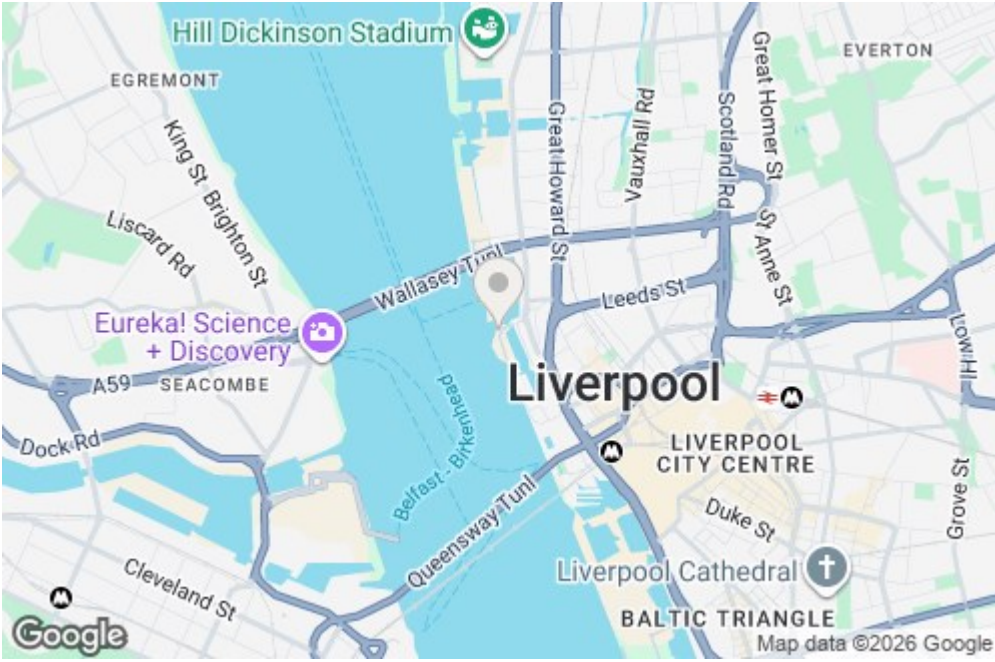
If you'd like to wander further afield, you have a huge range of transport links at your fingertips, along with easy access to the whole of Liverpool and beyond - you really couldn't be more perfectly located. With a bus stop practically on your doorstep and James Street train station just a short stroll away, commuting is a breeze.

Properties like this tend to get snapped up quickly, so make sure you give us a call if you fancy a closer look. And just so you know, the images are for marketing purposes only, so the fixtures and fittings may vary.

\*Available 14th April 2026\*  
Deposit - £1,210  
Council Tax Band - D  
Furnished



156, Alexandra Tower 19 Princes Parade, Liverpool, Merseyside, L3 1BF



Energy Efficiency Rating		Environmental Impact (CO <sub>2</sub> ) Rating	
Current	Potential	Current	Potential
105-120 kWh/m <sup>2</sup> (A)	92-100 kWh/m <sup>2</sup> (A)	100-120 g/m <sup>2</sup> (A)	92-100 g/m <sup>2</sup> (A)
81-105 kWh/m <sup>2</sup> (B)	72-92 kWh/m <sup>2</sup> (B)	81-100 g/m <sup>2</sup> (B)	72-92 g/m <sup>2</sup> (B)
66-81 kWh/m <sup>2</sup> (C)	55-72 kWh/m <sup>2</sup> (C)	66-81 g/m <sup>2</sup> (C)	55-72 g/m <sup>2</sup> (C)
51-66 kWh/m <sup>2</sup> (D)	40-55 kWh/m <sup>2</sup> (D)	51-66 g/m <sup>2</sup> (D)	40-55 g/m <sup>2</sup> (D)
36-51 kWh/m <sup>2</sup> (E)	25-40 kWh/m <sup>2</sup> (E)	36-51 g/m <sup>2</sup> (E)	25-40 g/m <sup>2</sup> (E)
21-36 kWh/m <sup>2</sup> (F)	15-25 kWh/m <sup>2</sup> (F)	21-36 g/m <sup>2</sup> (F)	15-25 g/m <sup>2</sup> (F)
6-21 kWh/m <sup>2</sup> (G)	10-15 kWh/m <sup>2</sup> (G)	6-21 g/m <sup>2</sup> (G)	10-15 g/m <sup>2</sup> (G)