



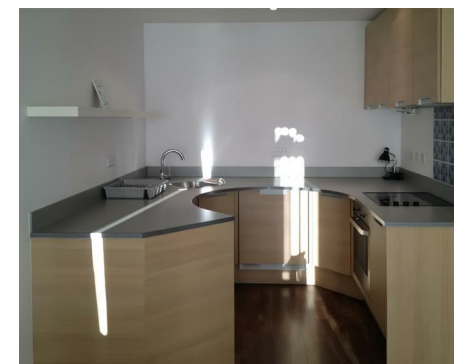
Let **UK** Home

2 Bedrooms

Flat

**Located
in Birmingham**

£1,250 Per Month



info@letukhome.co.uk

<https://www.letukhome.co.uk/>

01795 358 886



41 Essex Street Birmingham

B5 4TT



Let UK Home are excited to present a well-presented 2 bedroom, 2 bathroom apartment situated on the 2nd floor of the popular i-Land development in Birmingham city centre.

The property features a bright and spacious open-plan living and dining area with access to a private balcony, a modern fitted kitchen, two good-sized bedrooms, and two bathrooms, including an en-suite to the principal bedroom.

iLand boasts an impressive suite of resident amenities: 24-hour secure access, round-the-clock concierge, a communal courtyard and leisure terrace. These premium facilities deliver total peace of mind alongside pleasant outdoor spaces to unwind.

New Street Station is a short walk away, complemented by an extensive local bus network linking all major retail districts and transport interchanges across Birmingham. Commutes to the city centre and surrounding suburbs are fast and straightforward.

The locality is served by an excellent selection of highly rated primary and secondary schools, suitable for families with children of all ages. Several of Birmingham's leading universities are also within easy reach.

Positioned right in the centre of Birmingham's Chinatown, the area is filled with authentic Chinese restaurants, convenience stores and an array of international dining options. Bullring Shopping Centre is just moments from the door, home to

41 Essex Street Birmingham

£1,250 Per Month

- 2nd Floor
- Open-Plan Living Area
- City Centre Location
- EPC Rating: B
- Private Balcony
- Modern Kitchen
- Close to Transport Links and Amenities





Let **UK** Home

3F 2 Eastbourne Terrace
Paddington
London
W2 6LG

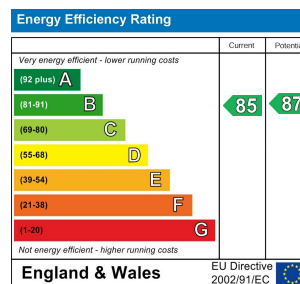
01795 358 886

info@letukhome.co.uk

Council Tax Band: D

Local Authority:

Agents Note: Whilst every care has been taken to prepare these particulars, they are for guidance purposes only. All measurements are approximate and are for general guidance purposes only and whilst every care has been taken to ensure their accuracy, they should not be relied upon and potential buyers/tenants are advised to recheck the measurements.



<https://www.letukhome.co.uk/>