



**Price**  
**£475,000**

**Freehold**

3x  2x  1x 

**Eastney Farm Road,  
Southsea, Hampshire,  
PO4**

**OVER 60?**

Secure this property  
for up to **59% less!**

**cubitt & west**  
Helping you move forwards



## Main features

- Large spacious accommodation
- Good sized double bedrooms
- Driveway for several vehicles
- Requested Eastney location
- Close to seafront

## Accommodation

### GROUND FLOOR

Porch

Entrance Hallway

Lounge: 23'7 x 20'5 (7.19m x 6.23m)

Kitchen/Dining Area: 24'0 x 10'4 (7.32m x 3.15m)

Utility Room: 9'6 x 8'6 (2.90m x 2.59m)

Cloakroom

### FIRST FLOOR

Landing

Bedroom 1: 15'7 x 11'7 (4.75m x 3.53m)

Bathroom

Bedroom 2: 17'1 x 9'3 (5.21m x 2.82m)

En-suite Bathroom

Bedroom 3: 11'6 x 10'9 (3.51m x 3.28m)

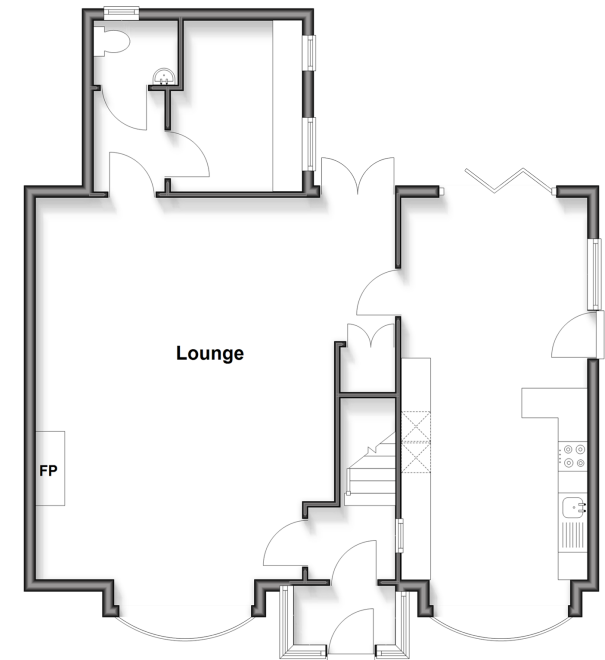
### OUTSIDE

Front & Rear Gardens

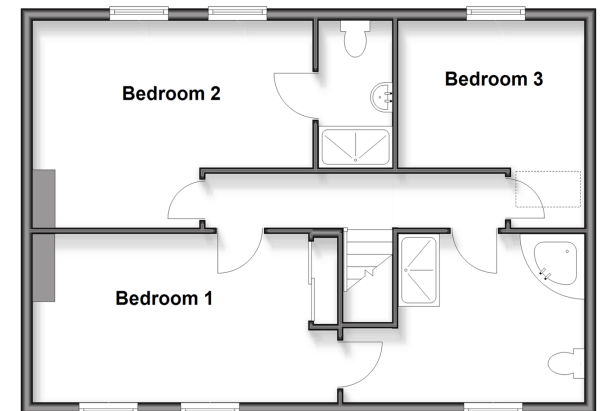
Driveway Parking

Garage

**Ground Floor**  
Approx. 75.9 sq. metres (816.9 sq. feet)



**First Floor**  
Approx. 60.7 sq. metres (653.3 sq. feet)



Call Southsea - 023 9229 6396 ■ [cubittandwest.co.uk](http://cubittandwest.co.uk)

■ Through a Homewise Home For Life Plan people aged 60+ can secure this property for up to 59% less, by purchasing a Lifetime Lease



42226796/20260324/JT/MO