

**SW19**

*it's all in the postcode...*



**Home Park Road**

**Monthly Rental Of £3,700**

- Four bedrooms
- Semi Detached
- Roof Terrace
- Excellent location
- Close to transport
- Available Now
- Council tax Band F
- EPC Rating C



020 8544 2828

Wimbledon: Wimbledon Park: Colliers Wood

[www.SW19.com](http://www.SW19.com)

SW19 Estate Agents Ltd. Is registered in England & Wales No. 05508737

*it's all in the postcode...*

A beautifully presented four-bedroom semi-detached house, ideally located within easy reach of the bars and restaurants of Wimbledon Village, as well as central Wimbledon with its mainline train and Underground connections. Home Park Road is also conveniently situated close to several highly regarded local schools, including Wimbledon Park Primary School, Ricards Lodge High School for Girls, and Bishop Gilpin CofE Primary School. The ground floor features a spacious open-plan reception area with a stylish kitchen and breakfast bar, complemented by bi-folding doors that open out onto a private garden, perfect for entertaining. On the first floor, there are three well-proportioned bedrooms and a modern family bathroom. The property further benefits from an impressive loft extension, offering a generous principal bedroom with en-suite bathroom and access to a stunning roof terrace. Offered unfurnished and available now.



---

020 8544 2828  
Wimbledon: Wimbledon Park: Colliers Wood  
[www.SW19.com](http://www.SW19.com)  
SW19 Estate Agents Ltd. Is registered in England & Wales No. 05508737

*'it's all in the postcode...'*

## Home Park Road, SW19

Approximate Gross Internal Area = 136.2 sq m / 1466 sq ft  
(Excluding Eaves)

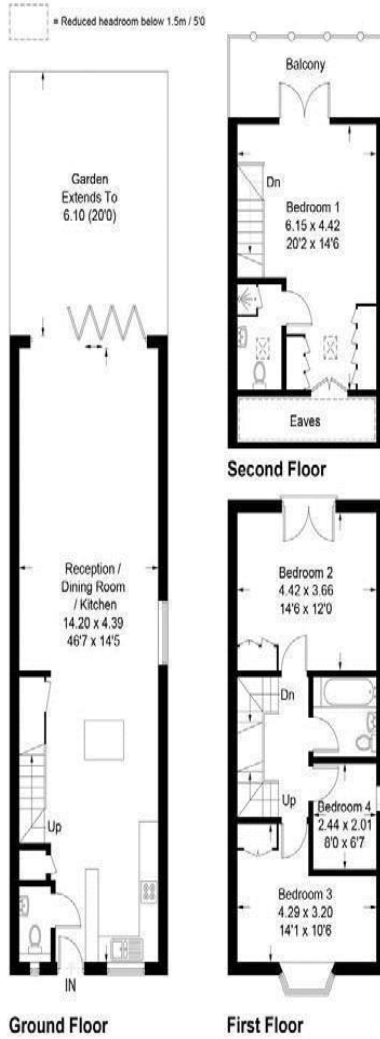


Illustration for identification purposes only, measurements are approximate, not to scale. FloorplansUsketch.com © 2018 (10414821)

020 8544 2828

Wimbledon: Wimbledon Park: Colliers Wood

[www.SW19.com](http://www.SW19.com)

SW19 Estate Agents Ltd. Is registered in England & Wales No. 05508737

*'it's all in the postcode...'*

These particulars are for guidance only and should not be relied upon as a statement or representation of fact. All measurements given are approximate only and should not be relied upon for ordering carpets, equipment etc. Purchasers should satisfy themselves by inspection or otherwise as to the accuracy of the statements contained within. Neither SW19 estate agents ltd or related companies or their employees can confirm structural conditions of the property or that any appliances or other facilities are in working order. Purchasers are strongly recommended to arrange their own survey.

---

020 8544 2828

Wimbledon: Wimbledon Park: Colliers Wood

[www.SW19.com](http://www.SW19.com)

SW19 Estate Agents Ltd. Is registered in England & Wales No. 05508737

*'it's all in the postcode...'*