



Guide Price
£225,000

Freehold

3x  1x  1x 

**Cowper Road,
Gillingham, Kent, ME7**

OVER 60?

Secure this property
for up to **59% less!**

Wards
Helping you move forwards



Main features

- Victorian terraced house, ideal for first time buyers looking to get on the property ladder
- Chain free sale
- Walking distance to local schools
- Situated close to amenities and excellent road access
- Rear garden, perfect for entertaining family and guests

Accommodation

SPLIT LEVEL GROUND FLOOR

Porch

Lounge: 12'1 x 10'2 into bay (3.69m x 3.10m)

Dining Area: 11'9 x 10'4 (3.58m x 3.15m)

Kitchen: 9'5 x 7'9 (2.87m x 2.36m)

Bathroom

SPLIT LEVEL FIRST FLOOR

Landing

Bedroom 1: 11'10 x 10'4 (3.61m x 3.15m)

Bedroom 2: 11'11 x 10'2 (3.63m x 3.10m)

Bedroom 3 (off Bedroom 2): 9'6 x 7'4 (2.90m x 2.24m)

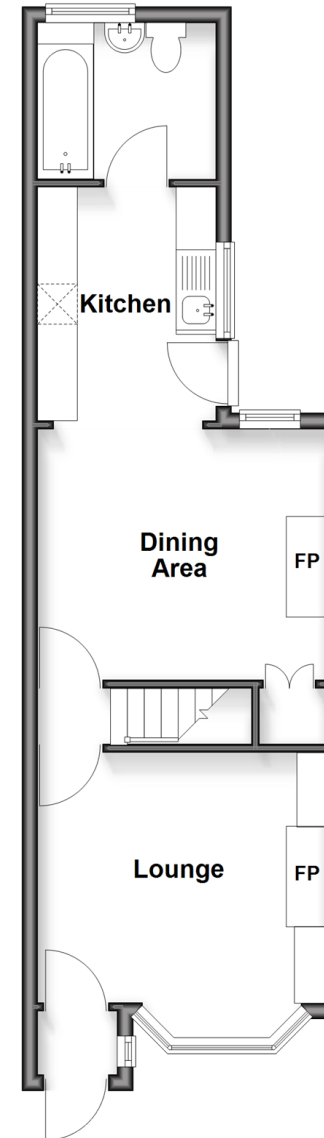
OUTSIDE

Front Garden

Rear Garden

Split Level Ground Floor

Approx. 38.4 sq. metres (413.1 sq. feet)



Split Level First Floor

Approx. 32.6 sq. metres (351.4 sq. feet)



Call Gillingham - 01634 851191 ■ wardsofkent.co.uk

- Legal advice should be taken to verify fixtures/fittings, planning, alterations and/or lease details
- Appliances & services are untested, dimensions are approximate and floor plans are not to scale
- Through a Homewise Home For Life Plan people aged 60+ can secure this property for up to 50% less, by purchasing a Lifetime Lease.



10927597/20251103/ML/HF