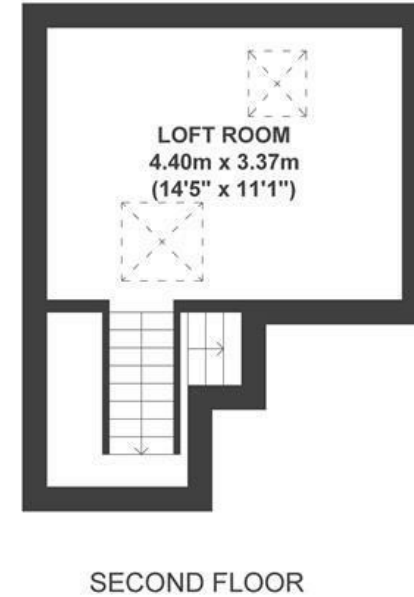
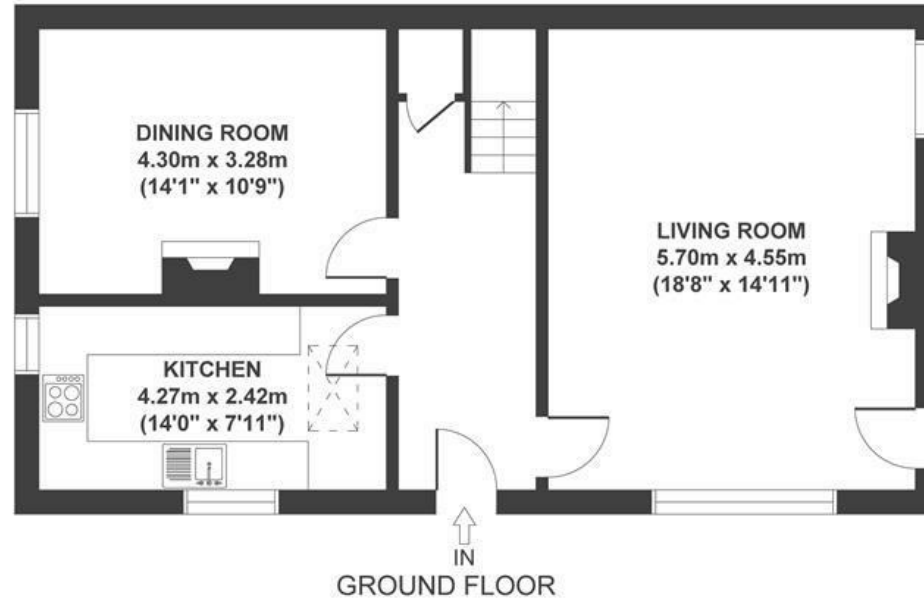
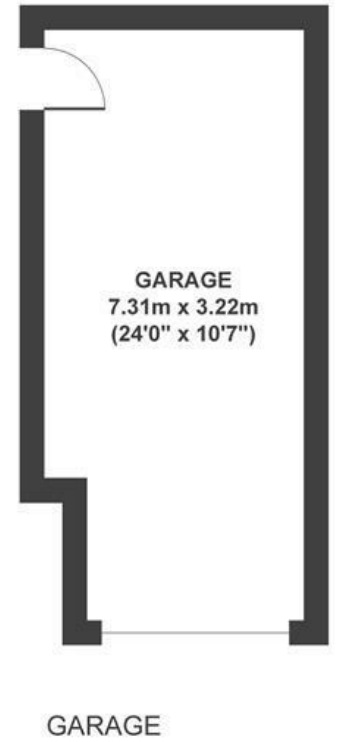
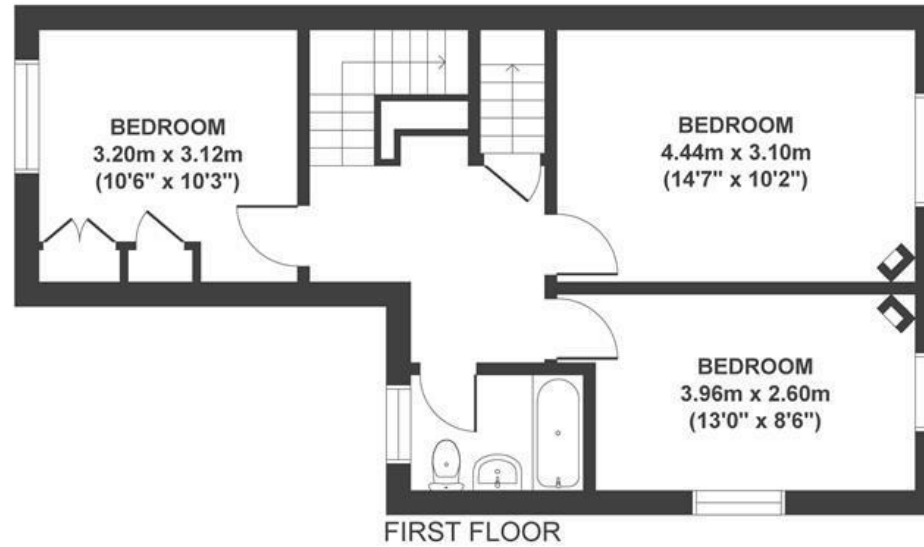


Shrubbery Road

DOWNEND

APPROXIMATE FLOOR AREA
132 SQM / 1420 SQFT



Boardwalk

Shrubbery Road

DOWNEND, BRISTOL

£

£500,000

zZz

3 Bedrooms



BS16 5TA



1 Bathrooms

"On the day I moved into this house in 1998 I knew this was home. It's been my sanctuary during difficult times and a place to celebrate the good. Wherever I've been in the world, I always look forward to coming home and the house never lets me down in its welcome."

