



## Cheyne Court, SW3

£1,950,000

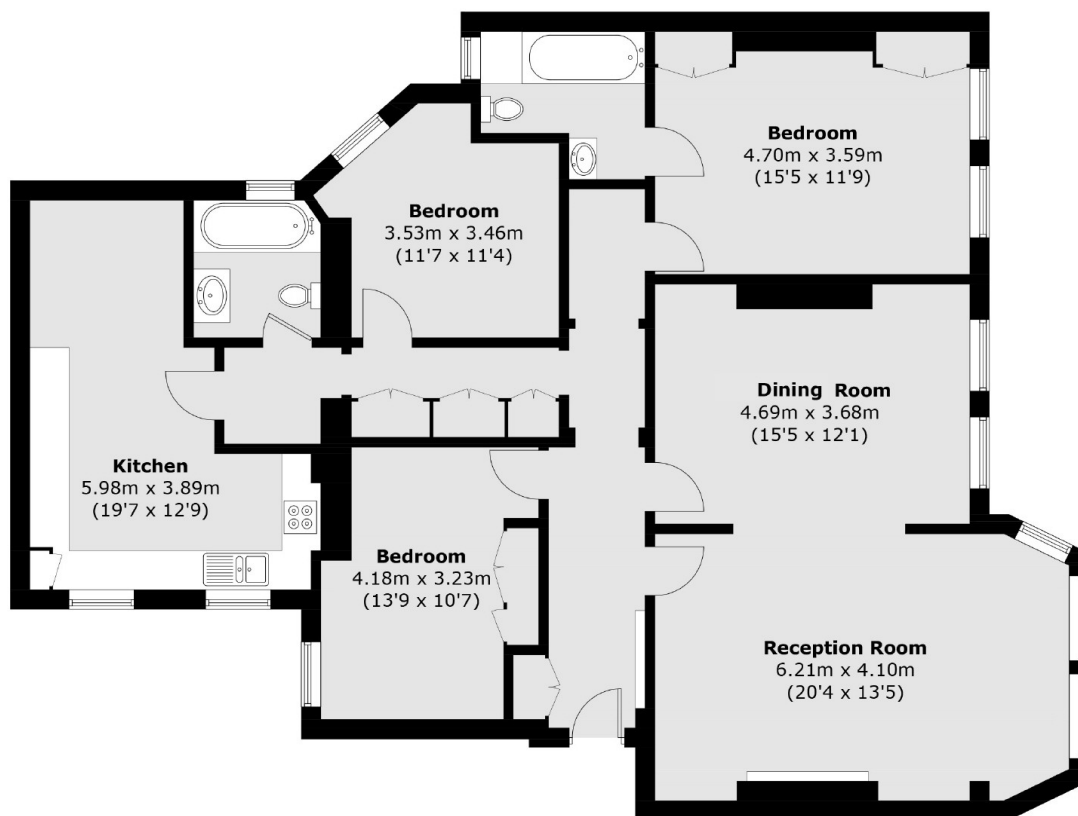
A quintessential Chelsea apartment located on the third floor (with lift) within a portered development. This property has three bedrooms, a wonderful open plan living room ideal for entertaining and benefits from a share of the freehold.

Cheyne Court is a portered Victorian mansion block located south of the King's Road close to the the green spaces of Burton Court and the Chelsea Physic Garden. This particular building is located on Flood Street, a pretty tree lined street that runs from the King's Road to Chelsea Embankment.

### Features

- Share of Freehold
- Lift
- Porterage
- Lateral Apartment
- Large Reception Room
- Quiet Location

# Cheyne Court, London, SW3



**Third Floor**

Total area (approx.): 140.2 sq. m (1509.1 sq. ft)