



**SUSSEX STREET**  
PIMLICO

**JACKSON-STOPS** 

---

## SUSSEX STREET PIMLICO, SW1V

ASKING PRICE: £692 PER WEEK

A well-presented two double bedroom basement flat in the popular Pimlico grid.

The property benefits from a dining area and private decked garden. Just 0.5 miles from Pimlico Underground Station, 0.5 Victoria Station, 0.7 miles from Sloane Square Underground Station and 0.6 miles from Battersea Park.

### KEY FEATURES

- Two Bedrooms
- Bathroom
- Kitchen
- Reception
- Dining Room
- Private Garden

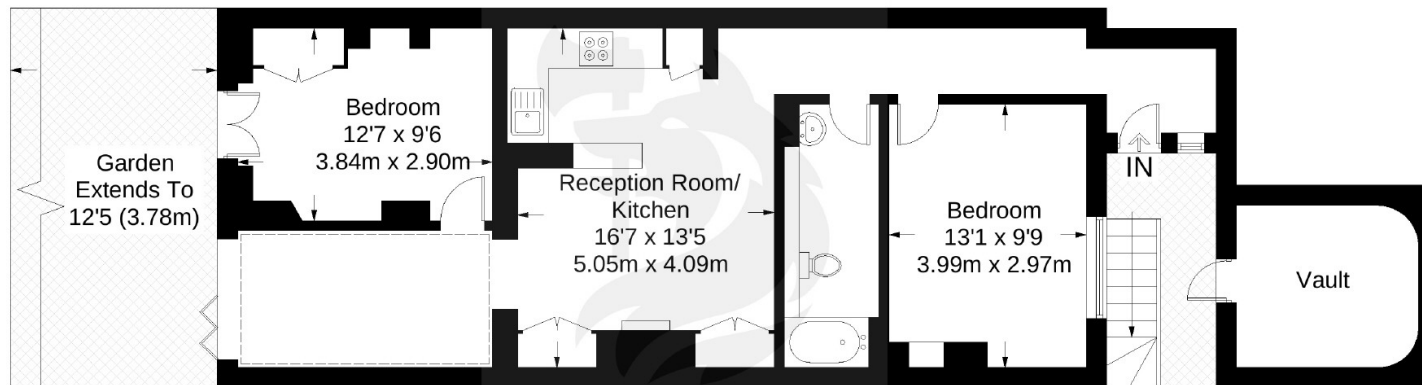






## Sussex Street

Total Area (Including Vault) = 804 sq ft / 74.7 sq m  
Approximate Gross Internal Area = 734 sq ft / 68.2 sq m  
Vault = 70 sq ft / 6.5 sq m



Lower Ground Floor

Not to scale, for guidance only and must not be relied upon as a statement of fact.  
All measurements and areas are approximate only and have been prepared in  
accordance with the current edition of the RICS Code of Measuring Practice.

Energy Rating: C. We aim to make our particulars both accurate and reliable. However they are not guaranteed; nor do they form part of an offer or contract. If you require clarification on any points then please contact us, especially if you are travelling some distance to view. Please note that appliances and heating systems have not been tested and therefore no warranties can be given as to their good working order.

**ASKING PRICE: £692 PER WEEK**

**PIMLICO**

**020 7828 4243**

[pimlicolettings@jackson-stops.com](mailto:pimlicolettings@jackson-stops.com)

[jackson-stops.co.uk](http://jackson-stops.co.uk)

**JACKSON-STOPS** 