



Ormonde Gate, SW3

£1,500,000

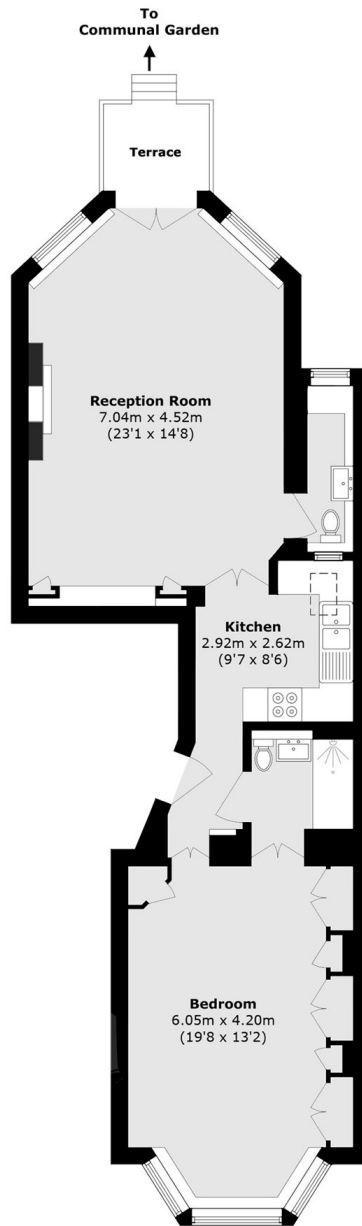
A quintessential Chelsea apartment with direct access to communal gardens. This property has been thoughtfully updated by the current owners and would make a fantastic London home or pied-à-terre.

Ormonde Gate is a quiet, tree-lined street ideally positioned south of the King's Road. Duke of York Square, Pavilion Road and the King's Road are all close by.

Features

- Share of Freehold
- Communal Gardens
- Low Service Charge
- High Ceilings
- One Bedroom
- Quiet Location

Ormonde Gate, London, SW3



Ground Floor

Total area (approx.): 74.0 sq. m (796.5 sq. ft)