

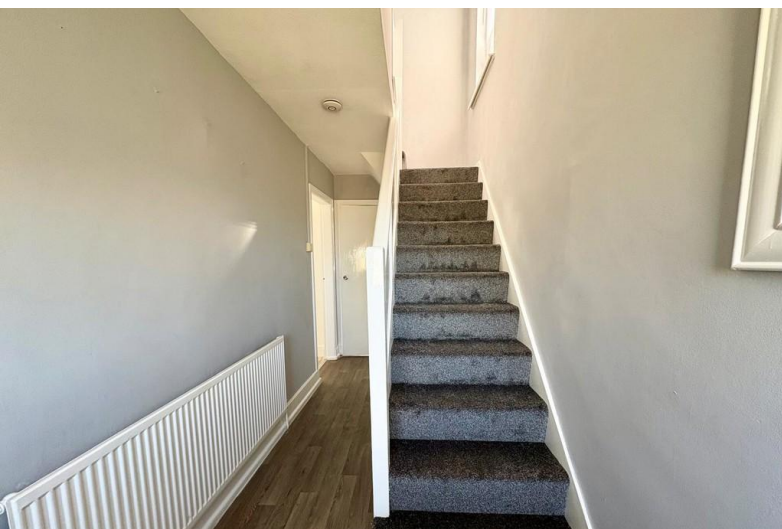


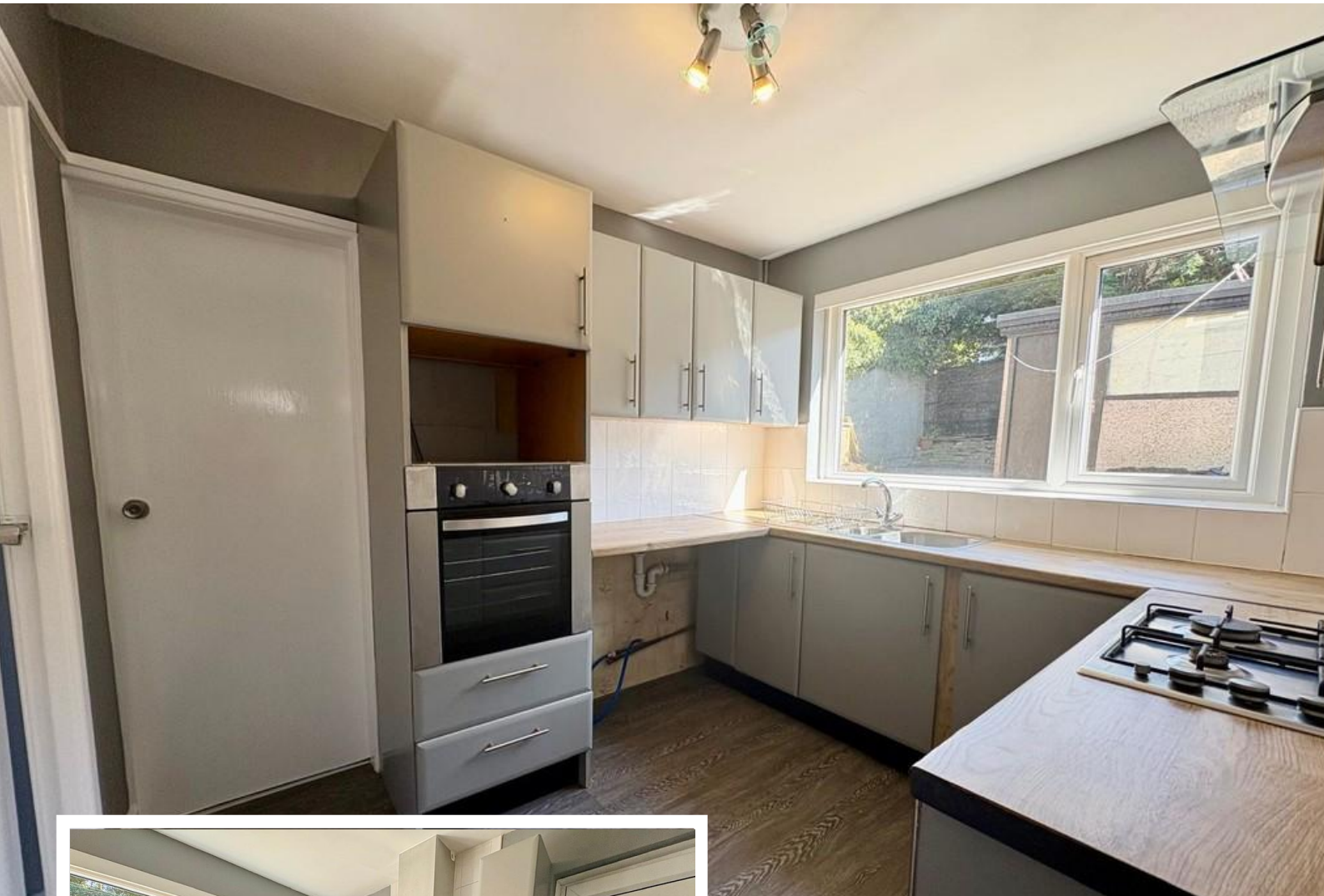
## 172 Pasture Lane

Clayton, Bradford, BD14 6NQ

- DEPOSIT - £1,269.23
- FRONT & REAR GARDENS
- WELL PRESENTED
- IDEAL FAMILY HOME

**£1,100 pcm**  
EPC Rating 'C'





## Property Description

### DIRECTIONS:

### PURCHASE DETAILS:

*Please note that the services & appliances have not been tested & the property is sold on that basis.*

Once you are interested in purchasing this property, ideally call in person or telephone this office to discuss your offer, we would suggest that this is done before contacting a bank, building society or solicitor as any delay could result in the property being sold to someone else and any survey and legal fees being





unnecessarily incurred.

**VALUATION:** If you are thinking of selling your home, why not contact one of our offices now for a FREE VALUATION strictly without any obligation. Contact us on Bradford (01274) 880019.

**MORTGAGES:** A full range of mortgage facilities are available subject to status. Our Financial Consultant will be only too happy to discuss with you your individual requirements. Please contact us for FREE & CONFIDENTIAL ADVICE.



**RENT-A-HOUSE:** Thinking of renting your HOUSE? FLAT? Contact (01274) 880019 for further details.







Score	Energy rating	Current	Potential
92+	A		
81-91	B		
69-80	C	73 C	78 C
55-68	D		
39-54	E		
21-38	F		
1-20	G		

11 Green End  
 Clayton  
 Bradford  
 West Yorkshire  
 BD14 6BA

www.whitneys.co.uk  
 sales@whitneys.uk.com  
 01274880019

Agents Note: Whilst every care has been taken to prepare these sales particulars, they are for guidance purposes only. All measurements are approximate are for general guidance purposes only and whilst every care has been taken to ensure their accuracy, they should not be relied upon and potential buyers are advised to recheck the measurements