



BARNES HIGH STREET, SW13

£2,250 per month

1 bedroom, 1 bathroom
Spacious Apartment
Art Deco Building
Lift Access
In the Heart of Barnes Village

@marshandparsons
marshandparsons.co.uk

MARSH &
PARSONS

ABOUT THE PROPERTY

A bright and spacious one bedroom apartment located on the 5th floor (lift access) in the heart of Barnes Village.

This spacious apartment comprises double bedroom with fitted in wardrobes, family bathroom, large reception room and separate fully equipped kitchen.

Seaforth Lodge is located prime central Barnes Village within moments from the boutique shops, pubs, cafés and restaurants. As well as a tranquil space of Barnes Pond and the River Thames.

The exceptional schools and nursery's in the area are

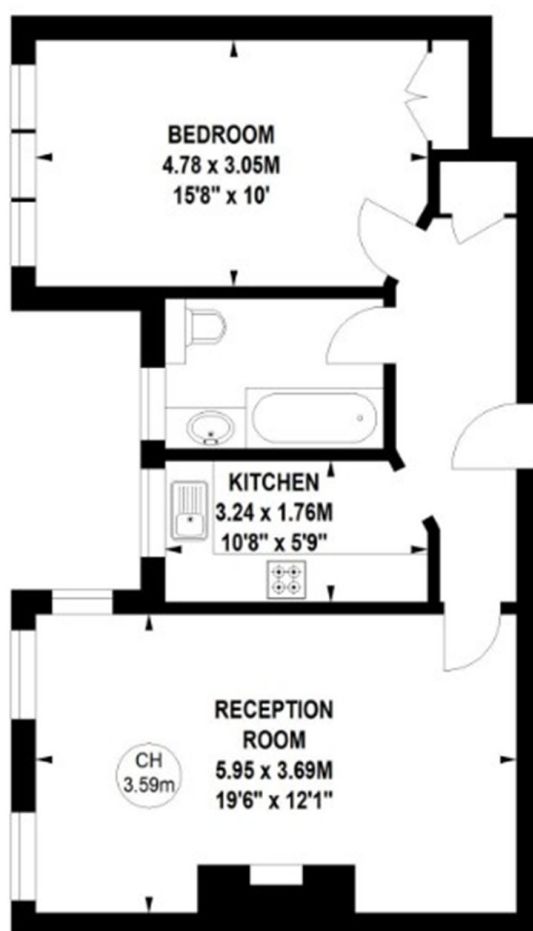
STEP INSIDE BARNES HIGH STREET

Seaforth Lodge, Barnes High Street, London, SW13

Approximate gross internal area

56.85 sq m / 612 sq ft

Key :
CH - Ceiling Height



Fifth Floor

Not to scale, for guidance only and must not be relied upon as a statement of fact.
All measurements and areas are approximate only

Barnes & East Sheen
020 8563 8222

Energy Rating: E We aim to make our particulars both accurate and reliable. However, they are not guaranteed; nor do they form part of an offer or contract. If you require clarification on any points then please contact us, especially if you're traveling some distance to view. Please note that appliances and heating systems have not been tested and therefore no warranties can be given as to their good working order

MARSH &
PARSONS