



**81, PENNYFERN
ROAD, GREENOCK, PA16 9HE**



 **neillclerk**
ESTATE AGENTS



Description

CLOSING DATE WED 18TH MARCH AT 11AM

This is a rare opportunity to purchase a three bedroom SEMI DETACHED VILLA within a desirable area which features a bathroom and additional shower room. A degree of internal upgrading and redecoration is required and upon completion of the works this will be a fine family home.] A driveway at the front of the house provides parking for one small car. There is a floored loft accessed by metal pull down ladder. Panoramic rear views over Greenock continue to the River Clyde.

Gardens extend to the front and rear. The rear garden is enclosed by fencing with lawned plot, paved patio areas, generous sized shed with light and power plus a greenhouse. A cellar is located to the side of the property. Specification includes: double glazing, gas central heating and loft.

Family apartments comprise: Entrance Hallway by UPVC double glazed door with understair cupboard. The generous sized dual aspect Lounge is an airy apartment with windows to the front and rear overlooking the gardens plus a marble fireplace with living flame gas fire.

There is a front facing Kitchen with oak style fitted units, marble effect work surface areas and breakfasting bar. Appliances include: extractor hood and gas cooker. A UPVC double glazed side door gives direct access to the side of the property. The downstairs Bathroom with side window offers a three piece suite comprising: pedestal wash hand, wc and corner bath. Additional benefits include: wall tiling and decorative panelled ceiling with downlighters.

Stairs lead to the Upper Landing with window to the rear and hatch to the loft. There are two double sized Bedrooms and 3rd single Bedroom. The 1st and 2nd bedrooms benefit from inbuilt wardrobe/cupboard storage. The Shower Room features a side window with three piece suite including: vanity wash hand basin, wc and shower cubicle with "Triton" shower. Viewing is highly recommended for this affordable family home. EPC=C

Measurements

Entrance Hall

Lounge
3.43m x 6.22m (11'3 x 20'5)

Kitchen
3.30m x 3.51m (10'10 x 11'6)

Downstairs Bathroom

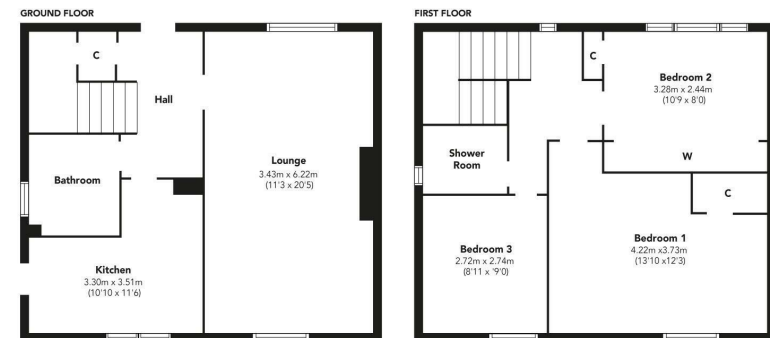
Upper Landing

Bedroom 1
4.22m x 3.73m (13'10 x 12'3)

Bedroom 2
3.28m x 2.44m (10'9 x 8'0)

Bedroom 3
2.72m x 2.74m (8'11 x 9'0)

Shower Room



Floorplans are indicative only - not to scale
Produced by Plushplans











The
next
step..



To view call 01475 888400. Speak to us 7 days a week until 11pm every day to book your viewing appointment.

House to sell or rent?

Call 01475 888400 to book your free market appraisal.

Require a solicitor?

Ask us to supply a free legal quotation from Neill Clerk & Murray, Solicitors.
www.neillclerkmurray.co.uk

Stay fully up-to-date by following Neill Clerk on:



**60 West Blackhall Street
Greenock
Renfrewshire
PA15 1UY**

t: 01475 888400

e: sales@neillclerk.co.uk

w: www.neillclerk.co.uk



Agents Notes:

These sales particulars are set out as a general outline only, issued in good faith, but do not constitute representations of fact and do not form part of any offer or contract. Any services, equipment, appliances, fittings or central heating systems have not been tested and no warranty is given or implied that these are in working order. All measurements are approximate and for guidance only.

Neither Neill Clerk Estate Agents nor any of its employees or agents has any authority to make or give any representation or warranty whatever in relation to this property.

Find all our properties at: [rightmove](https://www.rightmove.co.uk) [Zoopla](https://www.zoopla.co.uk) [onTheMarket.com](https://www.onthemarket.com) [s1homes.com](https://www.s1homes.com)