



Nevern Square, SW5

£496 Per week

A bright and spacious one bedroom flat on the raised ground floor within a Victorian conversion in the heart of Earls Court with a separate kitchen and Mezzanine study.

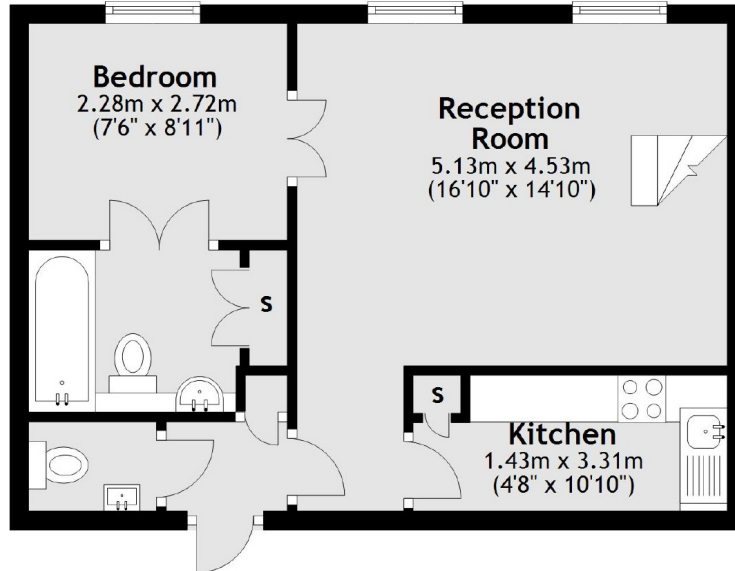
Arguably Earl's Courts premier garden square, Nevern Square is nestled quietly away from the hustle and bustle of Earls Court Road, whilst remaining comfortably within walking distance of the amenities and tube.

Features

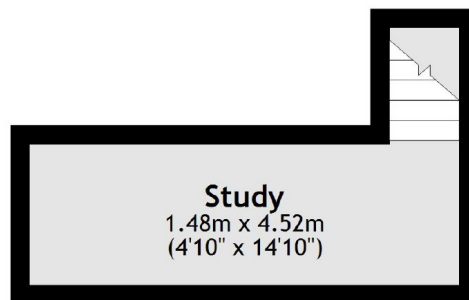
- One Bedroom
- One Bathroom
- Mezzanine
- Nevern Square
- Wooden Floors
- Storage

Nevern Square, London, SW5

Raised Ground Floor



Mezzanine



Total area: approx. 45.3 sq. metres (487.4 sq. feet)