



Guide Price
£350,000

Freehold

3x  1x  1x 

**Shenley Road, Dartford,
Kent, DA1**

OVER 60?

Secure this property
for up to **59% less!**

Wards
Helping you move forwards



Main features

- Terraced house with generous rear garden
- Spacious kitchen and living room perfect for entertaining
- Easy access to London and surrounding areas
- Close to good local schools
- Conveniently located for town centre and shops

Accommodation

GROUND FLOOR

Hallway
 Living Room: 13'0 x 13'0 (3.97m x 3.97m)
 Kitchen: 15'9 x 12'0 (4.80m x 3.66m)
 Bathroom

FIRST FLOOR

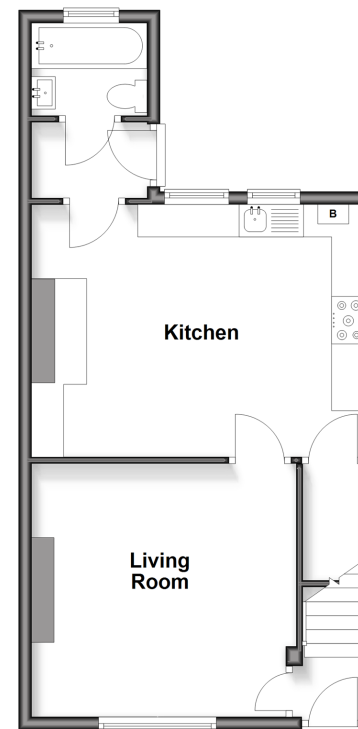
Landing
 Bedroom 1: 13'0 x 13'0 (3.97m x 3.97m)
 Bedroom 2: 13'0 x 8'0 (3.97m x 2.44m)
 Bedroom 3: 9'7 x 7'8 (2.92m x 2.34m)

OUTSIDE

Front Garden
 Rear Garden

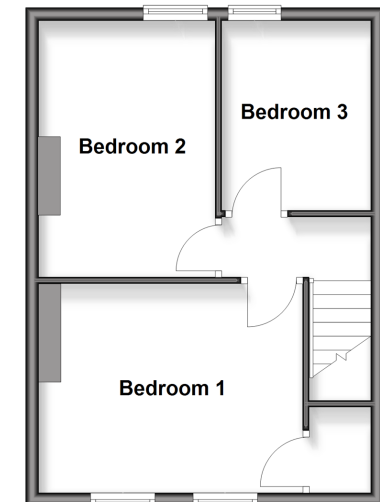
Ground Floor

Approx. 46.3 sq. metres (498.7 sq. feet)



First Floor

Approx. 37.5 sq. metres (404.0 sq. feet)



Call Dartford - 01322 288211 ■ wardsofkent.co.uk

■ Legal advice should be taken to verify fixtures/fittings, planning, alterations and/or lease details
 ■ Through a Homewise Home For Life Plan people aged 60+ can secure this property for up to 50% less, by purchasing a Lifetime Lease.

■ Appliances & services are untested, dimensions are approximate and floor plans are not to scale



10546226/20251119/CM/JH