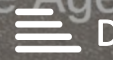




4 Abbey Stable Flats Church Green
Ramsey PE26 1DW
£725 Per month



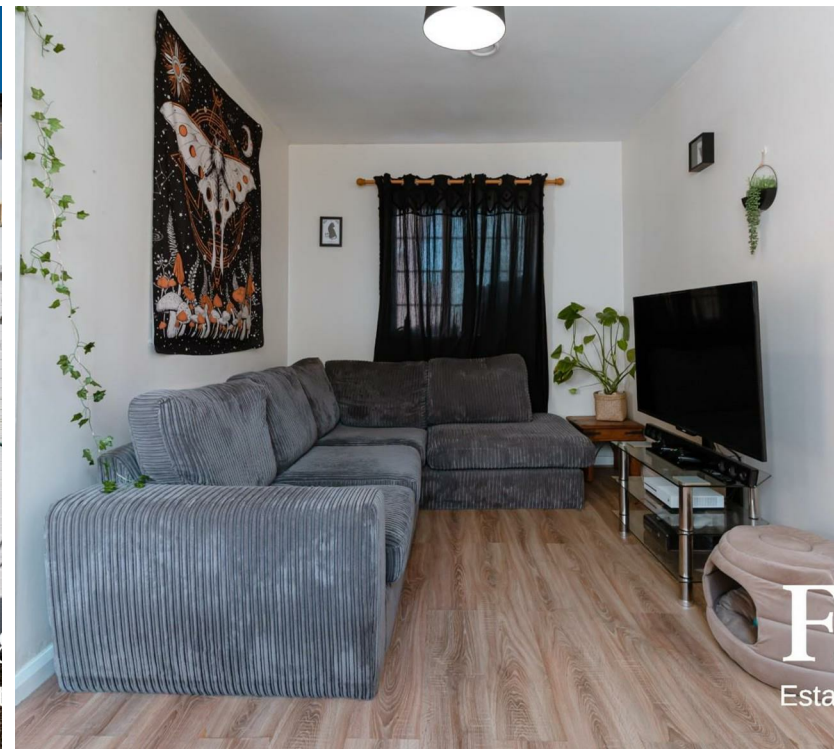
4 Abbey Stable Flats Church Ramsley PE26 1DW

Unfurnished terraced ONE bedroom bungalow comprising; large lounge, kitchen with a range of fitted units with built-in electric hob and oven, two double bedrooms, bathroom with shower over bath.

Courtyard area with parking. Gas central heating. The property has been completely re-decorated, and new carpets will be fitted.

Available May.

Pets considered at an extra £25 per month





Porch:

Hallway:

Kitchen:
11'11" x 7'11"

Lounge:
15'10" x 15'10"

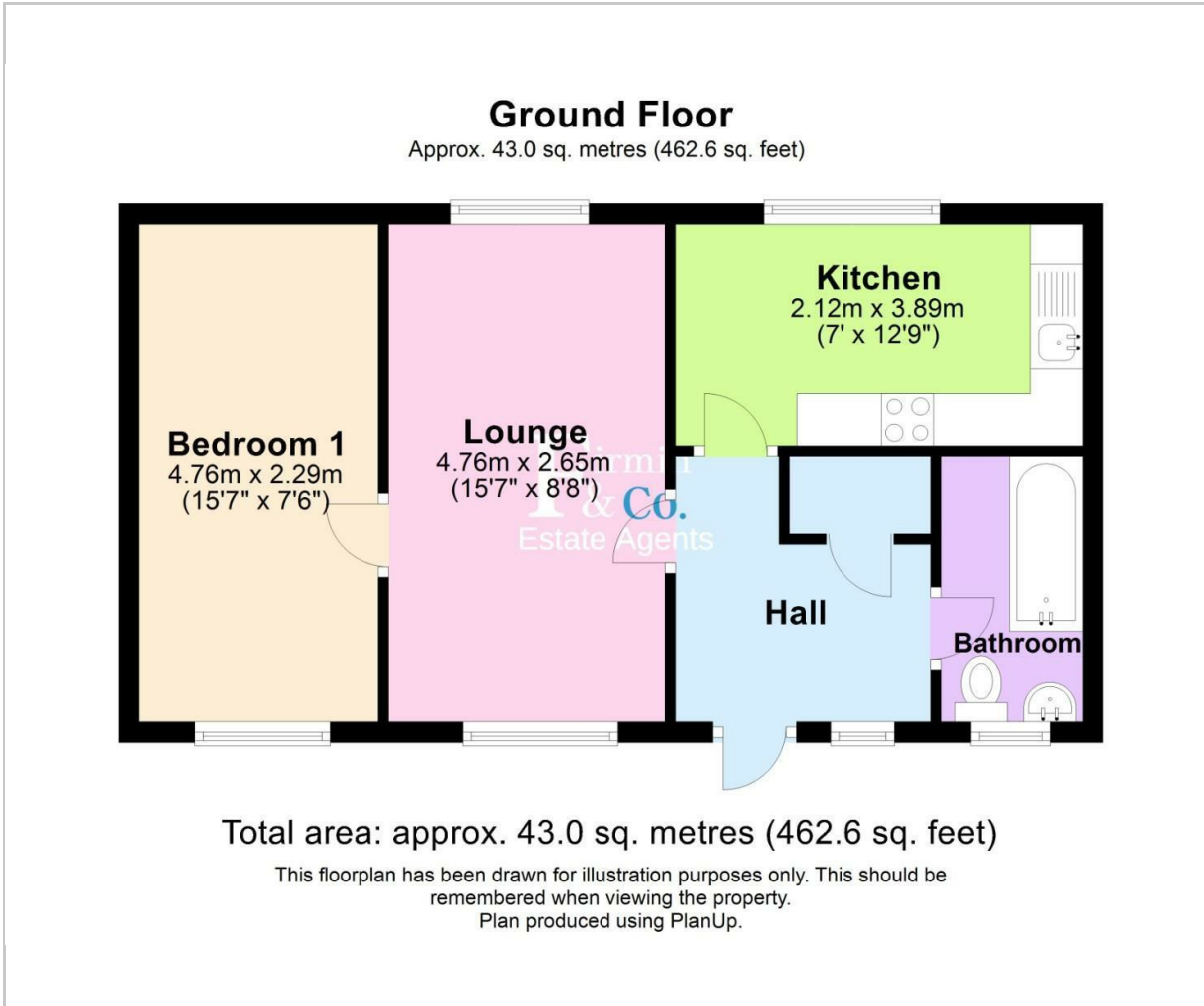
Bedroom One:
12' x 10'5"

Bedroom Two:
12' x 10'5"

Bathroom:



Floor Plan



Viewing

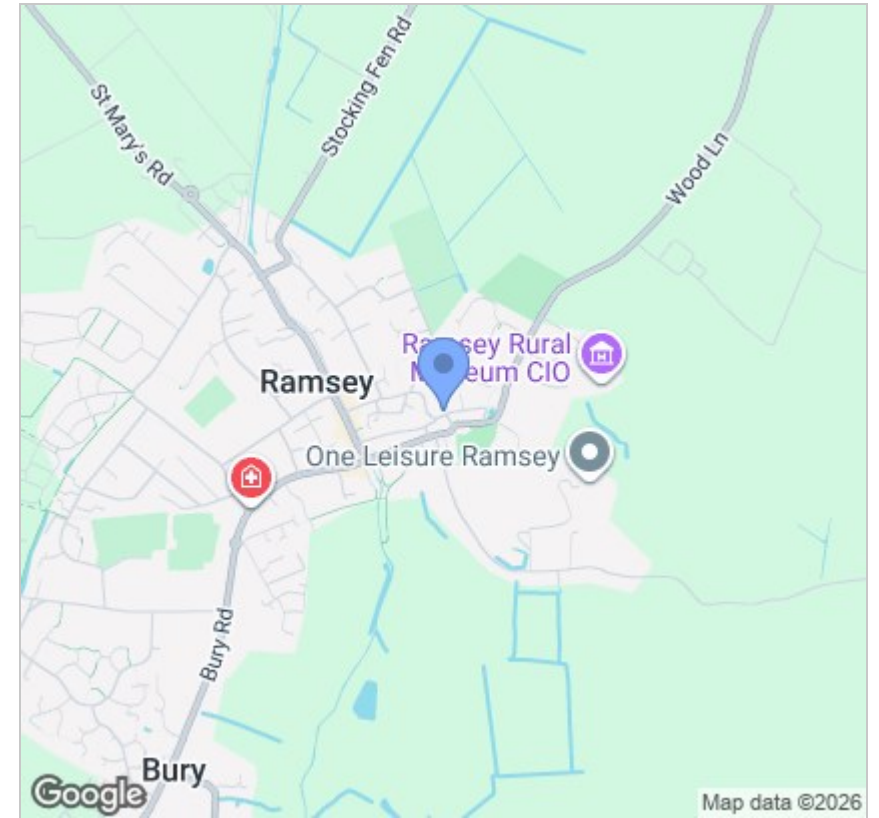
Please contact our Lettings Office on 01733 973673 if you wish to arrange a viewing appointment for this property or require further information.

These particulars, whilst believed to be accurate are set out as a general outline only for guidance and do not constitute any part of an offer or contract. Intending purchasers should not rely on them as statements of representation of fact, but must satisfy themselves by inspection or otherwise as to their accuracy. No person in this firm's employment has the authority to make or give any representation or warranty in respect of the property.



381 Eastfield Road,
Peterborough, PE1 4RA
T: 01733 973673
E: lettings@firminandco.co.uk

Area Map



Energy Efficiency Graph

