





My Lady's Cottage , Fifehead Magdalen, Gillingham, Dorset, SP8 5RR

What 3 Words: ///perusing.lasts.elite



Key Features

- No Forward Chain
- Grade II Listed
- Four/Five Bedrooms with Two En-Suites
- Wonderful Character Features Throughout
- Two/Three Reception Rooms with Two Inglenook Fireplaces
- Gated Driveway for Multiple Vehicles with Double Garage

Tenure: Freehold | EPC Rating: E | Council Tax Band: G |

Services: Mains water & Electricity are connected. The property is warmed via Oil Fired Central Heating and is connected to a waste water treatment plant.

Location

Fifehead Magdalen is a quiet rural village located in the stunning North Dorset countryside. The village has a church and a village hall, with nearby villages of Marnhull and West Stour offer shops and amenities for everyday needs. The larger market towns of Shaftesbury, Gillingham are all situated within a 10-mile radius and provide an excellent combination schooling options, transport links including mainline train stations and further leisure facilities.

Inside the Home

The property is entered into a hallway which extends to the rear leading to a porch with a cloakroom, and a door opening into the back garden. To the right of the cottage is the spacious dining room featuring a large inglenook fireplace and doors leading to the well-equipped kitchen with fitted appliances including two ovens and a dishwasher. To the other side of the cottage is a cosy sitting room with another fireplace, and a door leading through to the extension. This provides a room with flexible use as another reception room, or a ground floor bedroom as it offers an en-suite wet room. Upstairs on the first floor, there are two good sized bedrooms with one benefitting from an en-suite shower room. There is also the family bathroom, and stairs leading to the second floor. On the second floor, there are two further bedrooms with both offering fitted wardrobes and access to eaves storage.

Outside Space

The property enjoys beautiful, well-manicured gardens to the front and rear. At the front is a small lawn, with a path to the front door, and a gated driveway which has an electric car charging point and leads to a detached double garage. The rear garden is laid to lawn with a mix of mature flower beds, fruit trees and shrubs. The rear garden also offers an ornamental pond, greenhouse, vegetable beds and a large shed at the top of the garden which is connected to the mains electricity.

Shall We Book You in For a Viewing?

Strictly by appointment only via Boatwrights Estate Agents.

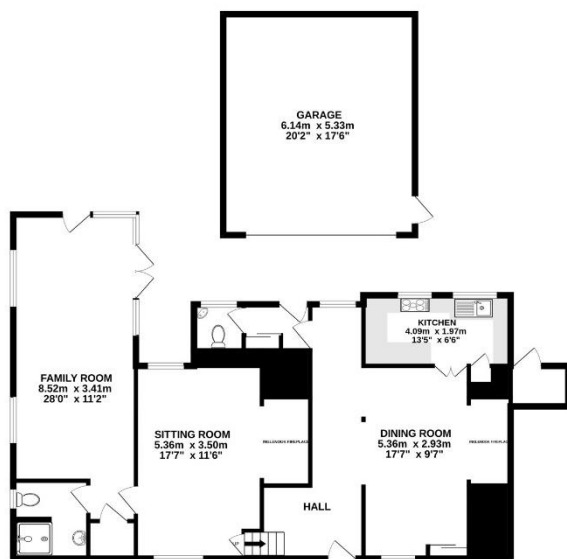
12 High Street, Shaftesbury, Dorset, SP7 8JG | 01747 213106
High Street, Tisbury, Wiltshire, SP3 6LD | 01747 859359
sales@boatwrights.co.uk | www.boatwrights.co.uk

Scan to
read more
on the
property

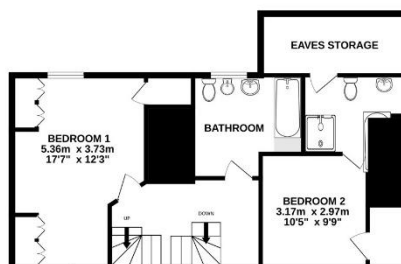




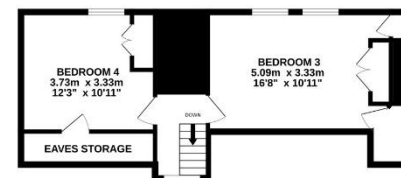
GROUND FLOOR
133.9 sq.m. (1442 sq.ft.) approx.



1ST FLOOR
61.1 sq.m. (658 sq.ft.) approx.



2ND FLOOR
39.1 sq.m. (421 sq.ft.) approx.



TOTAL FLOOR AREA : 234.2 sq.m. (2521 sq.ft.) approx.

Whilst every attempt has been made to ensure the accuracy of the floorplan contained here, measurements of doors, windows, rooms and any other items are approximate and no responsibility is taken for any error, omission or mis-statement. This plan is for illustrative purposes only and should be used as such by any prospective purchaser. The services, systems and appliances shown have not been tested and no guarantee as to their operability or efficiency can be given.
Made with Metropix ©2026



Looking to buy or sell in North Dorset?

At Boatwrights Estate Agents, selling your home starts with trust. As your local, independent experts, we understand the value of your property and your time. Our dedicated team offers tailored marketing, expert guidance, and a personal touch to help you achieve the best possible result.

Scan here to Learn more On Boatwrights?



Important Notice

These particulars do not constitute or form part of an offer or contract, nor may they be regarded as representations. All interested parties must themselves verify their accuracy. All measurements and the proportions of the floor plans provided are approximate.

03 June 2026