



Lydney Road
Southmead, Bristol BS10

James Crumpton
The **Bristol** Property Expert

 **The
Property
Experts**







Offered to the market with no onward chain, this well-presented three bedroom end of terrace home is a fantastic opportunity for buyers looking for space, practicality and a convenient Bristol location.

The accommodation begins with a practical porch leading to a spacious and welcoming entrance hall. There is also a bright and comfortable living room, perfect for relaxing or entertaining. To the rear, the kitchen offers a practical layout with access to a useful utility cupboard, helping to keep everyday living organised and clutter-free.

Upstairs, the property continues to impress with three double bedrooms, ideal for families, sharers or those needing flexible work-from-home space. A key feature of the home is the two bathrooms, thoughtfully arranged with one on each floor, adding convenience for modern living.

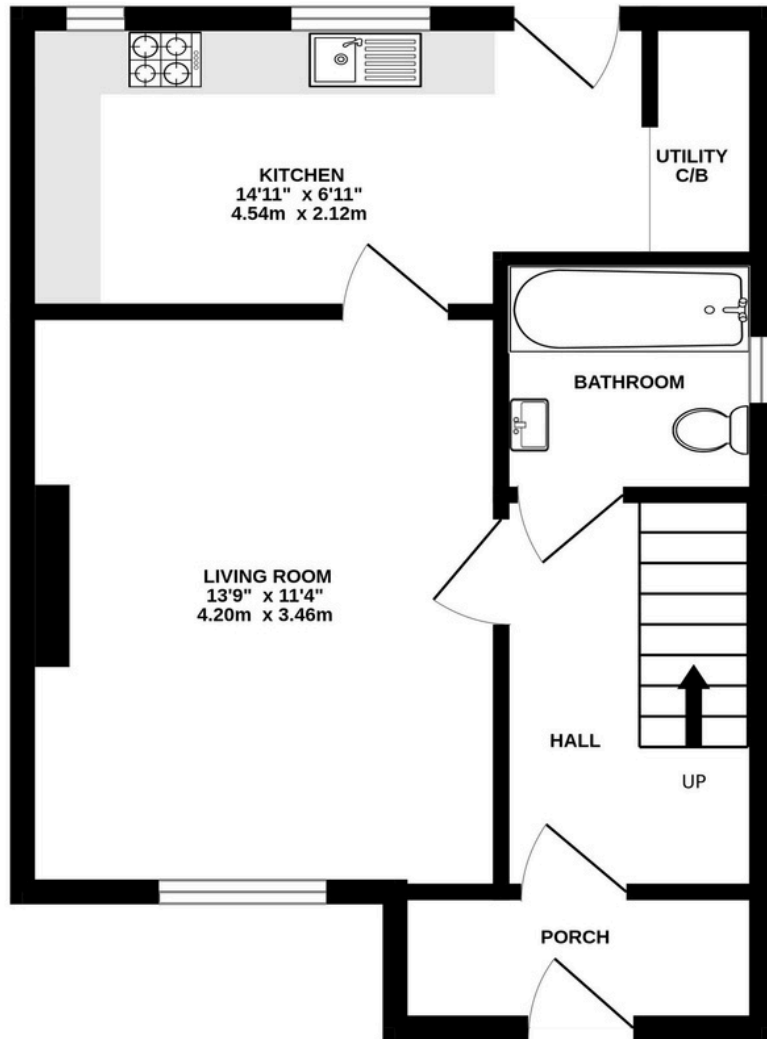
Externally, the property benefits from driveway parking to the front, while to the rear you'll find a generous garden, offering plenty of space for outdoor dining, entertaining, or simply enjoying the warmer months. The property also benefits from the addition of solar panels, providing improved energy efficiency and the potential for reduced running costs.

Lydney Road is well positioned for easy access to local shops, schools and amenities, with excellent transport links into Clifton and Bristol city centre. Nearby green spaces and parks make it ideal for families and those who enjoy the outdoors, while major road connections provide convenient routes for commuters. The area also offers convenient access to major employers including Southmead Hospital, The MOD, Rolls Royce and Airbus.

This is a great all round home offering space, flexibility and location, perfect for first-time buyers, families or investors alike.



GROUND FLOOR
388 sq.ft. (36.1 sq.m.) approx.



1ST FLOOR
357 sq.ft. (33.2 sq.m.) approx.

