



## Abbots Manor, SW1V

£550,000

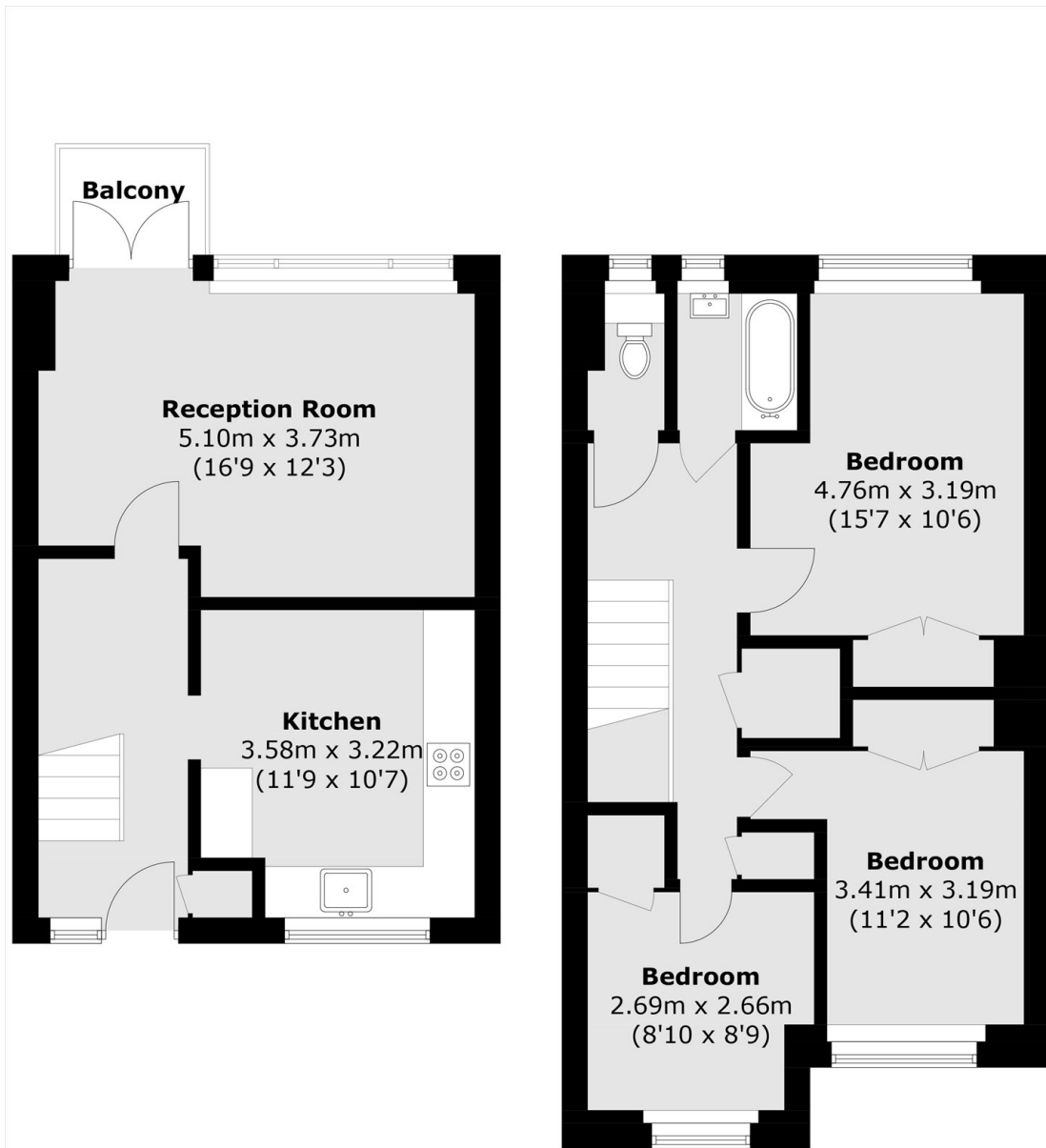
This split-level property benefits from three bedrooms, two bathrooms, a separate kitchen and living space and a private balcony. This property has ample storage and is flooded with light throughout.

Abbots Manor is conveniently located close to the neighbourhoods of Belgravia, Pimlico and Chelsea, as well as Victoria and the historical landmarks of Westminster and St. James's.

### Features

- Three Bedrooms
- Two Bathrooms
- Split Level
- Private Balcony
- Separate Kitchen
- Victoria Station

# Abbots Manor, London, SW1V



**Second Floor**

**Third Floor**

Total area (approx.): 85.9 sq. m (924.7 sq. ft)  
Balcony : 2.1 sq. m (22.6 sq. ft)