



## PARFREY STREET, W6

£4,250 per week ( per month)

3 Bedroom  
3 Bathroom  
Brand New Renovation  
South Facing Garden  
Private Entrance  
Duplex

@marshandparsons  
marshandparsons.co.uk

MARSH &  
PARSONS

# ABOUT THE PROPERTY

A beautifully designed and newly renovated three-bedroom, three-bathroom duplex apartment extending to approximately 1,121 sq ft, ideally located on the highly sought-after Parfrey Street. Accessed via its own private front door, this impressive home offers the feel of a house while benefiting from the convenience of apartment living.

Finished to an exceptional standard throughout, the property has been thoughtfully refurbished to create a stylish and contemporary living environment. The accommodation comprises a spacious open-plan kitchen, dining and reception area, perfectly suited to modern living and entertaining. The kitchen opens directly onto a

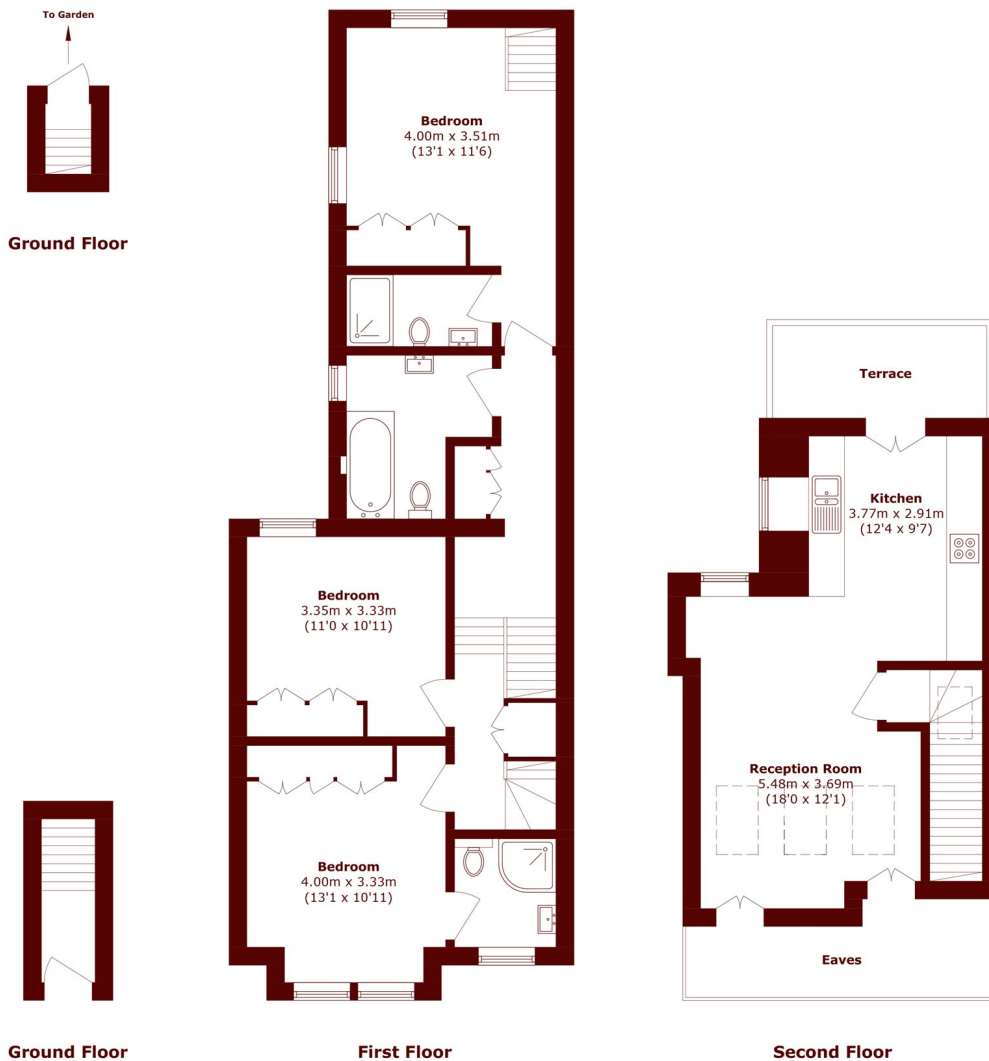








# STEP INSIDE PARFREY STREET



Total area (approx.): 104.2 sq. m (1121.6 sq. ft)  
Terrace area (approx.): 5.3 sq. m (57.0 sq. ft)  
(Excluding Eaves)

**Bishops Park**  
020 7368 2480

Energy Rating: We aim to make our particulars both accurate and reliable. However, they are not guaranteed; nor do they form part of an offer or contract. If you require clarification on any points then please contact us, especially if you're traveling some distance to view. Please note that appliances and heating systems have not been tested and therefore no warranties can be given as to their good working order

**MARSH &  
PARSONS**