
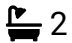



Carter Grove, Wolverton

Guide Price £450,000

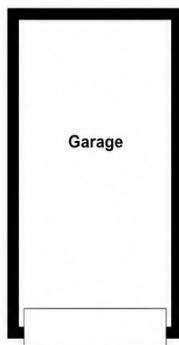
 4  2  1



A well-presented four-bedroom semi-detached townhouse in Wolverton, Milton Keynes, offering flexible accommodation across three floors. Featuring four double bedrooms, an en-suite to the principal bedroom, a spacious living room with media wall, private rear garden, driveway parking for at least three vehicles and a detached garage, this versatile family home is ideally positioned close to Wolverton railway station and local amenities.

Key Features

- Built in 2012 by David Wilson
- 131.3m² = 1431.5sq ft
- Master bedroom with en-suite
- Detached garage and driveway parking
- Vendors are upsizing locally
- Current owners since 2023
- 4 double bedrooms
- Private rear garden
- Close to Wolverton railway station and local amenities
- REF: AJ1276

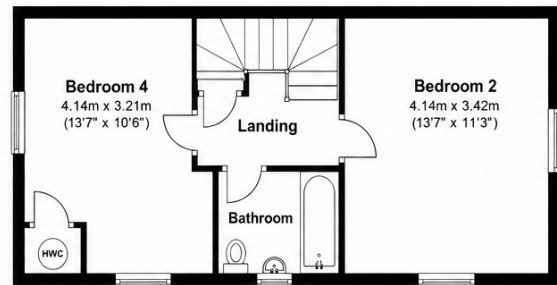


Garage

Approx. 57.8 sq. metres (621.6 sq. feet)

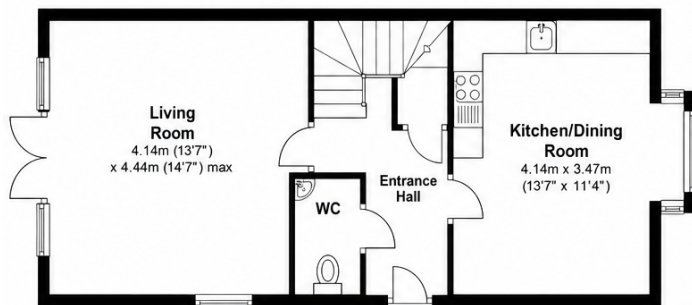
Second Floor

Approx. 37.0 sq. metres (398.8 sq. feet)



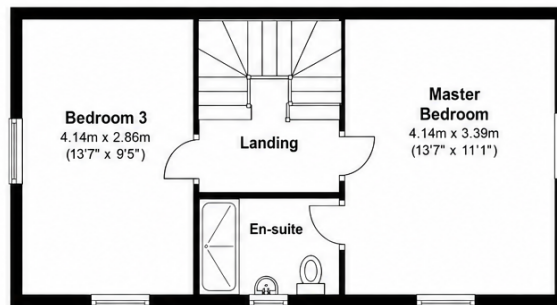
Ground Floor

Approx. 57.8 sq. metres (621.6 sq. feet)



First Floor

Approx. 36.5 sq. metres (393.1 sq. feet)



Total area: approx. 131.3 sq. metres (1413.5 sq. feet)

Floor Plans are for layout purposes only.
Plan produced using PlanUp.