




Highwood Avenue, Solihull, B92 8SS

£375,000

 3  1  2

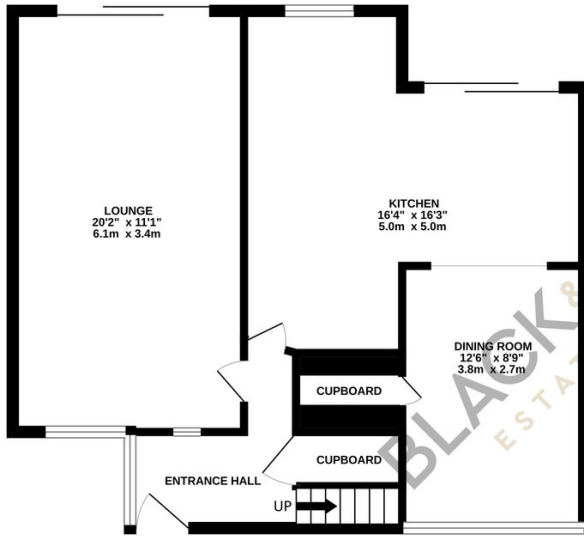


A three-bedroom detached home situated on the popular Highwood Avenue in Solihull, offering excellent potential to modernise and extend (STPP). Benefitting from ample parking, garage, rear garden and no upward chain.

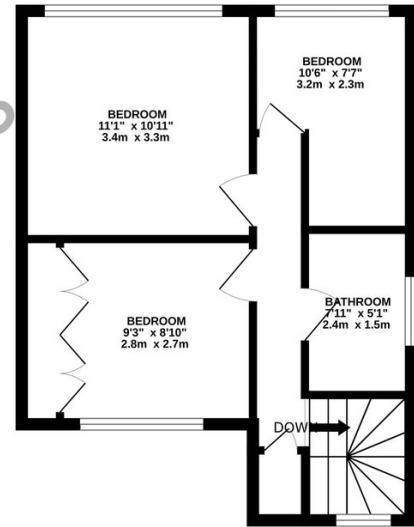
Key Features

- Detached three-bedroom house
- Popular and convenient Solihull location
- Spacious living room, dining room and breakfast kitchen
- Family bathroom to the first floor
- Generous driveway with ample off-road parking Single garage to the side
- Private rear garden
- In need of basic modernisation
- Potential to extend, subject to planning permission
- Offered with no upward chain

GROUND FLOOR
609 sq.ft. (56.6 sq.m.) approx.



1ST FLOOR
404 sq.ft. (37.5 sq.m.) approx.



TOTAL FLOOR AREA : 1013 sq.ft. (94.1 sq.m.) approx.

Whilst every attempt has been made to ensure the accuracy of the floorplan contained here, measurements of doors, windows, rooms and any other items are approximate and no responsibility is taken for any error, omission or mis-statement. This plan is for illustrative purposes only and should be used as such by any prospective purchaser. The services, systems and appliances shown have not been tested and no guarantee as to their operability or efficiency can be given.
Made with Metropix ©2025